

Policies, Safety & U

2014 ANNUAL SECURITY AND FIRE SAFETY REPORT



Table of Contents

From the President	4
From the Assistant Vice President for Police and Public Safety	4
ANNUAL SECURITY REPORT	
PREPARATION OF THE ANNUAL SECURITY REPORT AND DISCLOSURE OF CRIME STATISTICS	5
ABOUT THE DEPARTMENT OF POLICE AND PUBLIC SAFETY	5
Role, Authority, and Training	5
Safety, Our Number One Priority	5
Working Relationship with Local, State, and Federal Law Enforcement Agencies	5
Crimes Involving Student Organizations at Off-Campus Locations	6
REPORTING CRIMES AND OTHER EMERGENCIES	6
Voluntary, Confidential Reporting	6
Reporting to University Police	6
Reporting to Other Campus Security Authorities	7
TIMELY WARNING REPORTS	7
EMERGENCY RESPONSE AND EVACUATION PROCEDURES	7
Emergency Management at Penn State University	7
Drills, Exercises, and Training	7
Emergency Notification	8
SECURITY OF and ACCESS TO UNIVERSITY PARK FACILITIES	9
Special Considerations for Residence Hall Access	9
Special Considerations for Athletic Facility Access	9
Security Considerations for the Maintenance of Campus Facilities	9
PENN STATE'S RESPONSE TO DOMESTIC VIOLENCE, DATING VIOLENCE, SEXUAL ASSAULT, AND STALKING	10
Our Commitment to Addressing Sexual Assault/Rape, Domestic Violence, Dating Violence, and Stalking	10
What is Consent?	10
Defining Sexual Assault/Rape, Domestic Violence, Dating Violence, and Stalking	10
What to do if you have been the victim of sexual assault, dating violence, domestic violence or stalking	11
Risk reduction, warning signs of abusive behavior and future attacks	12
University Procedures for Responding to Reports of Sexual Assault, Domestic Violence, Dating Violence, and Stalking	12
Internal Disciplinary Procedures that will be followed once an incident of Domestic Violence, Dating Violence, Sexual Assault, or Stalking has been reported	14
Internal Disciplinary Procedures for institutional disciplinary action in cases of alleged Domestic Violence, Dating Violence, Sexual Assault and Stalking	14
Possible sanctions or protective measures Penn State may impose following a final determination of an institutional procedure	15
Protecting the confidentiality of victims	16
Education and Prevention Programs	16
Sex Offender Registration — Campus Sex Crimes Prevention Act	16
CAMPUS SECURITY POLICIES; CRIME PREVENTION AND SAFETY AWARENESS PROGRAMS	17
Behavioral Threat Management Team	17
Weapons Policy	17
Pennsylvania Crime Victim Rights	17





Student Conduct	17
Parental Notification Policy	18
Missing Student Policy	18
Daily Crime and Fire Log	19
Crime Prevention and Safety Awareness Programs	19
PENN STATE UNIVERSITY POLICIES GOVERNING ALCOHOL AND OTHER DRUGS	21
Penn State's Alcohol and Drug Policy	21
Residence Life Alcohol Policy	22
Pennsylvania Alcohol-Related Offenses	22
Related Drug Offenses	24
Controlled Substances Act	25
Drugs Risks and Consequences	27
Drug and Alcohol Abuse Education Programs	28
ANNUAL DISCLOSURE OF CRIME STATISTICS	29
Clery Act Crimes	29
THE PENNSYLVANIA UNIFORM CRIME REPORT ACT	32
HOUSING REPORT	33
(1) Types of Student Housing Available	33
(2) Policies on housing assignment and requests by students for assignment changes	33
(3) Policies concerning the identification and admission of visitors in student housing facilities	33
(4) Measures to secure entrances to student housing facilities	34
(5) Standard security features used to secure doors and windows in students' rooms	34
(6)) Type and number of, and description of security training provided to, employees, including security personnel, assigned to the student housing facilities	34
(7) Type and frequency of programs designed to inform student housing residents about housing security and enforcement policies	35
(8) Policy and any special security procedures for housing students during low-occupancy periods such as holidays and vacation periods	36
(9) Policy on housing of guests and others not assigned to the student housing or not regularly associated with the institution of higher education	36
(10) Number of undergraduate and graduate students living in student housing	36
ANNUAL FIRE SAFETY REPORT	37
Definitions	37
Fire Safety	37
Fire Statistics for On-Campus Student Housing Facilities	37
Description of On-Campus Student Housing Fire Safety Systems	
Residence Halls/Apartments	38
Student Employee Housing (Used by a limited number of student employees)	40
Residence Hall Fire Drills	41
Prohibitions on Portable Electrical Appliances, Smoking, and Open Flames	41
Evacuation Procedures	41
Fire Safety Education and Training Programs for Students, Faculty and Staff	41
Fire Incident Reporting	42
Plans for Future Improvements in Fire Safety	42
IMPORTANT PHONE NUMBERS	42
PSUAlert.....	43
Register to Vote	43



From the President

To the University Community—

We at Penn State are committed to providing a safe campus environment, and we ask that everyone takes ownership of this goal. Over the years and in myriad ways, Penn State has undertaken many important institutional efforts to address safety issues, including this publication. I urge you to review the information about campus safety measures, reporting crimes and other emergencies, as well as the procedures and policies designed to protect our University community. We have no greater priority than the safety of our students, faculty, staff and visitors to our campuses, but a truly safe campus can only be achieved through the cooperation of everyone. Thank you for attention to this very important mission.

Eric J. Barron
President

From the Assistant Vice President for Police and Public Safety

To the University Community—

On behalf of the members of the University Police & Public Safety, I want to thank you for your interest in our annual publication “Policies, Safety & U.” We publish this report because it contains valuable information for our campus community. We encourage you to review the information we have made available to you in this brochure. You will find information about our organization, including descriptions of certain services that we provide. You will also become familiar with our strong commitment to victims of crimes and the specific extensive services we make available to them. Lastly, you will find important information about security policies and procedures on the Penn State campuses, crime data, and crime prevention information. We join President Barron in the commitment to foster a secure and supportive environment at Penn State. We are proud to be an integral part of Penn State’s tradition of excellence. Campus safety and security is a collaborative effort at Penn State. It has always been our goal to provide the highest quality of public safety services to the University community and we are honored to collaborate with the entire Penn State community. The men and women of the University Police & Public Safety are committed to making the Penn State campus a safe place in which to live, work, and study.

Stephen G. Shelow
Assistant Vice President for Police and Public Safety

Accessibility to Information and Non-Discrimination Policy

This publication is available in alternative format upon request. The University is committed to equal access to programs, facilities, admission, and employment for all persons. It is the policy of the University to maintain an environment free of harassment and free of discrimination against any person because of age, race, color, ancestry, national origin, religion, creed, service in the uniformed services (as defined in state and federal law), veteran status, sex, sexual orientation, marital or family status, pregnancy, pregnancy-related conditions, physical or mental disability, gender, perceived gender, gender identity, genetic information, or political ideas. Discriminatory conduct and harassment, as well as sexual misconduct and relationship violence, violates the dignity of individuals, impedes the realization of the University’s educational mission, and will not be tolerated. Direct all inquiries regarding the nondiscrimination policy to Dr. Kenneth Lehrman III, Vice Provost for Affirmative Action, Affirmative Action Office, The Pennsylvania State University, 328 Boucke Building, University Park, PA 16802-5901; Email: kfl2@psu.edu; Tel 814-863-0471.

Annual Security Report

PREPARATION OF THE ANNUAL SECURITY REPORT AND DISCLOSURE OF CRIME STATISTICS

The University Police and Public Safety publishes this report to inform the Penn State community about campus security policies, initiatives to prevent and respond to crime and emergencies, and the occurrence of crime on campus. This report complies with the Jeanne Clery Disclosure of Campus Security and Crime Statistics Act and uses information maintained by the University Police, information provided by other University offices such as Student Affairs, Residence Life, Office of Student Conduct, Campus Security Authorities, and information provided by local law enforcement agencies surrounding University Park campus. Each of these offices provides updated policy information and crime data.

This report provides statistics for the previous three years concerning reported crimes that occurred on campus, in certain off-campus buildings or property owned, leased, or controlled by Penn State University. This report also includes institutional policies concerning campus security, such as policies regarding sexual assault, alcohol, and other drugs.

The University distributes a notice of the availability of this Annual Security and Fire Safety Report by October 1 of each year to every member of the University community. Anyone, including prospective students and employees, may obtain a paper copy of this report by contacting the University Police at 814-865-1864 or by visiting <http://www.police.psu.edu/clery/>.

ABOUT THE DEPARTMENT OF POLICE & PUBLIC SAFETY

Role, Authority, and Training

The University Police & Public Safety protects and serves the Penn State community 24 hours a day, 365 days a year. The department is responsible for a number of campus safety and security programs including Emergency Management, Community Safety and Security Education, and physical security, including security technology, behavioral threat assessment, and special event management.

The department comprises:

- 51 Police Officers
- 2 Security Officers
- 6 Police Dispatcher Recorders
- 9 Assistant Police Service Officers
- 200 Student Auxiliary Officers, who are responsible for vehicle and crowd control during special events, security services, and residence hall security patrols.

The police officers at University Park campus:

- Have a bachelor's degree or equivalent;
- Complete a training course required of all municipal police officers in Pennsylvania;
- Speciality officers receive ninety to one hundred hours of in-service training each year and specialize in crime prevention, fingerprint technology, evidence technology, hazardous device technology, emergency first aid, CPR/AED, weapons and tactics;



- Are commissioned police officers under the Administrative Code of 1929 and the Municipal Police Officers Education and municipal police officers in the Commonwealth, being authorized to carry firearms and empowered to make arrests. All reported criminal incidents within its jurisdiction are investigated by the University Police at University Park. All crimes that occur on campus or University property shall be reported to University Police.

University Police and Public Safety Mission Statement: "Protecting our community through professional service, education, diversity, and ethical accountability by promoting safety and security."

Safety, Our Number One Priority

The University takes great pride in the community at Penn State University Park and has many advantages for students, faculty, and staff. This community is a great place to live, learn, work, and study; however, this does not mean that the campus community is immune from problems that arise in other communities. With that in mind, Penn State has taken progressive measures to create and maintain a safe environment on campus.

Though the University is progressive with its policies, programs, and education, it is up to each of us to live with a sense of awareness and use reasonable judgment when living, working, or visiting on campus.

Working Relationship with Local, State, and Federal Law Enforcement Agencies

The University Police maintains a cooperative relationship with the Pennsylvania State Police, State College Borough Police, and surrounding police agencies. This includes interoperative radio capability and a joint police records computer system, training programs, special events coordination, and, at times, joint investigation of serious incidents.

The Penn State University Police participates in an Intermunicipal Mutual Aid Agreement that authorizes police officers and supervisors of the participating agencies to request mutual aid for incidents based upon a reasonable belief that such aid will enhance the public's and/or officer safety and efficiency. The agencies participating in the agreement are Bellefonte Borough, State College Borough, Ferguson Township, Patton Township, and Spring Township. The agreement also allows for joint training and cooperation on other matters, such as pre-planned large-scale special events, among the participating agencies.

Crimes Involving Student Organizations at Off-Campus Locations

Penn State University relies on its close working relationships with local law enforcement agencies to receive information about incidents involving Penn State students and recognized student organizations off campus. In coordination with local law enforcement agencies, the University Police will actively investigate certain crimes occurring on or near campus. External law enforcement agencies; including State College Borough, Patton Township and Ferguson Township will formally notify the Office of Student Conduct of criminal activity involving students or student organizations.

The University requires all recognized student organizations to abide by federal, state, and local laws, and University regulations. The University may become involved in the off-campus conduct of recognized student organizations when such conduct is determined to affect a Substantial University Interest (as defined in the University Off-Campus Misconduct Policy at <http://studentaffairs.psu.edu/conduct/policies/offcampus.shtml>).

REPORTING CRIMES AND OTHER EMERGENCIES

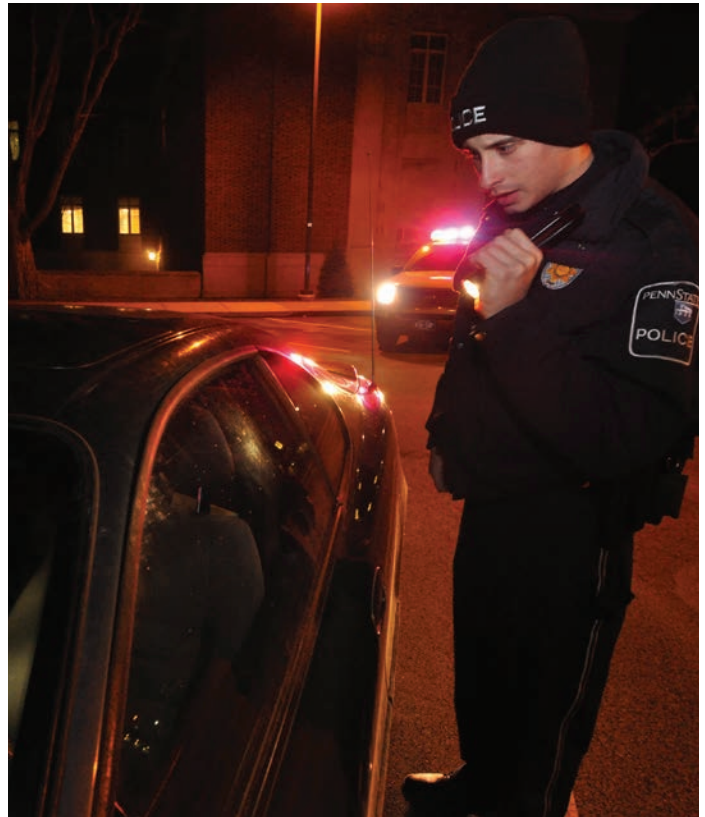
The University has a number of ways for campus community members and visitors to report crimes, serious incidents, and other emergencies to appropriate University officials. Regardless of how and where you decide to report these incidents, it is critical for the safety of the entire University Park community that you immediately report all incidents so that the University Police can investigate the situation and determine if follow-up actions are required, including issuing a Timely Warning or emergency notification.

Voluntary, Confidential Reporting

If crimes are never reported, little can be done to help other members of the community from also being victims. We encourage University community members to report crimes promptly and to participate in and support crime prevention efforts. The University community will be much safer when all community members participate in safety and security initiatives.

If you are the victim of a crime or want to report a crime you are aware of, but do not want to pursue action within the University or criminal justice system, we ask that you consider filing a voluntary, confidential report. Depending upon the circumstances of the crime you are reporting, you may be able file a report while maintaining your confidentiality. The purpose of a confidential report is to comply with your wish to keep your personally identifying information confidential, while taking steps to ensure your safety and the safety of others. The confidential reports allow the University to compile accurate records on the number and types of incidents occurring on campus. Reports filed in this manner are counted and disclosed in the Annual Security and Fire Safety Report. In limited circumstances, the department may not be able to assure confidentiality and will inform you in those cases.

Anyone may call the University Police at 814-863-1111. Callers may remain anonymous.



Reporting to University Police

We encourage all members of the University community to report all crimes and other emergencies to University Police in a timely manner. University Police have a dispatch center that is available by phone at 814-863-1111 or in person twenty-four hours a day at the Eisenhower Parking Deck. Although many resources are available, University Police strongly encourage all crimes be reported, whether or not an investigation continues, to assure the University can assess any and all security concerns and inform the community if there is a significant threat to the University community.

Emergency Phones

The University has installed more than 200 emergency phones throughout the University Park campus. Phones are located in public areas of buildings including parking garages, elevators, residence hall complexes, administration buildings, and numerous outdoor locations. Emergency phones provide direct voice communications to the University Police Dispatch Center. Please visit <http://www.police.psu.edu/documents/campusnightmap.pdf>.

Anonymously

If you are interested in reporting a crime anonymously, you can utilize the University Police's online crime reporting website, which can be accessed at <http://www.police.psu.edu/psu-police/report-crime.cfm>. University Police typically will not attempt to trace the origin of the person who submits this form, unless such is deemed necessary for public safety. Persons may also report crimes through the Centre County Crime Stoppers at 1-877-99CRIME or via the website. You can also submit tips through Pennsylvania Crime Stoppers at 1-800-4-PA-TIPS or via the website.

Reporting to Other Campus Security Authorities

While the University encourages all campus community members to promptly report all crimes and other emergencies directly to the University Police at 814-863-1111 or 911, we also recognize that some may prefer to report to other individuals or University offices. The Clery Act recognizes certain University officials and offices as “Campus Security Authorities (CSA).” The act defines these individuals as “officials of an institution who has significant responsibility for student and campus activities, including, but not limited to, student housing, student discipline, and campus judicial proceedings. An official is defined as any person who has the authority and the duty to take action or respond to particular issues on behalf of the institution.”

While the University has identified several hundred CSAs at University Park, we officially designate the following offices as places where campus community members should report crimes:

Official	Campus Address	Phone Number
University Police & Public Safety	20 Eisenhower Parking Deck	814-863-1111
Office of Vice President for Student Affairs	206 Old Main	814-865-0909
Office of the Associate Vice President for Human Resources	James M. Elliott Building	814-863-6188
Office of Affirmative Action	328 Boucke Building	814-863-0471
Office of Student Conduct	120 Boucke Building	814-863-0342
Office of the General Counsel	108 Old Main	814-867-4088
The Office of Residence Life, including all RAs, PAs, ADs, & RLCs	201 Johnston Commons	814-863-1710
Ethics and Compliance	127 S. Burrowes St.	814-867-5088

Pastoral and Professional Mental Health Counselors

According to the Clery Act, pastoral and professional mental health counselors who are appropriately credentialed and hired by Penn State to serve in a counseling role are not considered Campus Security Authorities when they are acting in the counseling role. As a matter of policy, the University encourages pastoral and professional mental health counselors to notify those whom they are counseling of the voluntary, confidential reporting options available to them.

TIMELY WARNING REPORTS

In an effort to provide timely notice to the campus community in the event of a Clery Act crime that may pose a serious or ongoing threat to members of the community, the University Police issues “Timely Warnings.” The University may issue a Timely Warning for the following crimes: arson; aggravated assault; criminal homicide; domestic violence, dating violence, robbery; burglary, sexual assault, hate crimes; and stalking. The University may also issue a Timely Warning for alcohol, drug, and weapon arrests or referrals that may

cause a continuing threat to the community. University Police will distribute these warnings through a variety of ways, including but not limited to posters, emails, and media. The University also has the ability to send text message alerts to those who register their cell phone numbers. The text messaging can be a very effective way to send important information to the campus community.

The purpose of a Timely Warning is to notify the campus community of the incident and to provide information that may enable the community to take steps to protect themselves from similar incidents. The University will issue Timely Warnings whenever the following criteria are met: (1) a crime is reported; (2) the perpetrator has not been apprehended; and (3) there is a substantial risk to the safety of other members of the campus community because of this crime. The University may also issue a Timely Warning in other circumstances, as outlined above.

At University Park, the chief of University Police will generally make the determination, in consultation with other University offices, if a Timely Warning is required. However, in emergency situations, any police supervisor may authorize a Timely Warning. For incidents involving off-campus crimes, the University may issue a Timely Warning if the crime occurred in a location used and frequented by the University population.

EMERGENCY RESPONSE AND EVACUATION PROCEDURES

Emergency Management at Penn State University

The Office of Emergency Management assists departments and campuses with developing, maintaining, and implementing emergency operations plans, developing and conducting exercise, hazard and risk education, and building partnerships with external response agencies. The Office of Emergency Management is responsible for assisting with and coordinating the University’s overarching mitigation, preparedness, response and recovery programs.

Each campus, within the Penn State University system, maintains an emergency management program. Within the context of these programs, each campus develops and distributes emergency response procedures to students and employees. These procedures are maintained and distributed in a variety of ways. Some campuses post the information in hallways and classrooms, others have this information available on their website. Pamphlets and brochures with emergency response information are available at all locations through the campus’s security or police department.

Drills, Exercises, and Training

To ensure the campus’s emergency management plans remain current and actionable, the campuses conduct at least one exercise annually. These exercises include, but are not limited to: tabletops, drills, functional, or full-scale. The campuses conduct after-action reviews of all emergency management exercises. The Office of Emergency Management works with each campus location to develop exercises scenarios and schedules and coordinates these events with local, state, and federal response agencies as well as stakeholders.

In conjunction with at least one emergency management exercise each year, the campus will notify the appropriate campus community of the exercise and remind the community of the University’s PSUAAlert system and emergency response procedures.

Emergency Notification

Penn State University is committed to ensuring the campus community receives timely, accurate, and useful information in the event of a significant emergency or dangerous situation on campus or in the local area that poses an immediate threat to the health and safety of campus community members. The Pennsylvania State University uses the emergency notification system RAVE to provide alerts via PSUALERT. PSUALERT is an emergency notification service available to students, faculty and staff. PSUALERT is a closed, opt-out system. PSUALERT can be used to send emergency messages within minutes of the occurrence of an incident. Alerts sent by PSUALERT are simulcast to the University community via our news wire www.news.psu.edu, Penn State's Facebook page, Twitter, or at the subscriber's choice, his/her cellular or land-line telephone. Individual Twitter accounts for all twenty-four locations are available to individuals that do not have Penn State e-mail addresses. All Penn State e-mail addresses are automatically in the system and cannot be removed by the user. All of the twenty-four campuses have full access to PSUALERT for posting.

Confirming the Existence of a Significant Emergency or Dangerous Situation and Initiating the Emergency Notification System:

The Department of Police and Public Safety and/or other campus Institutional Officials may become aware of a critical incident or other emergency situation that potentially affects the health and/or safety of the campus community. Generally, Institutional Officials become aware of these situations when they are reported to the campus police or security department or directly to an Institutional Official.

Once first responders confirm that there is, in fact, an emergency or dangerous situation that poses an immediate threat to the health or safety of some or all members of the campus community, first responders will notify supervisors in the Department of Police and Public Safety or other Institutional Official to issue an emergency notification.

The campus's authorized representatives will immediately initiate all or some portions of the campuses Emergency Notification Annex. If, in the professional judgment of first responders, issuing a notification potentially compromises efforts to assist a victim or to contain, respond to, or otherwise mitigate the emergency, the campus may elect to delay issuing an emergency notification. As soon as the condition that may compromise efforts is no longer present, the campus will issue the emergency notification to the campus community without delay.

Determining the Appropriate Segment or Segments of the Campus Community to Receive an Emergency Notification:

Campus and/or local first responders on the scene of a critical incident or dangerous situation will assist those preparing the emergency notification with determining what segment or segments of the campus community should receive the notification. Generally, campus community members in the immediate area of the dangerous situation (i.e., the building, adjacent buildings, or surrounding area) will receive the emergency notification first. The responsible campus authorities will continually evaluate the situation and assess the need to notify additional segments of the campus population.



Determining the Contents of the Emergency Notification:

Speed and accuracy of the information are of utmost importance in issuing emergency notifications. To expedite this process and ensure each message contains essential information, the mass notification system contains pre-scripted templates for the most probable or highest impact emergencies based on a campuses' Hazard Vulnerability Analysis (HVA). These messages identify the situation, allow for input of the location, and identify the immediate protective action that should be taken. The individual authorizing the message will select the most appropriate template. In those cases where there are no predetermined templates in the system, the individual may use the "custom" template to craft a specific message. The goal is to ensure people are aware of the situation and they know the steps to take to stay safe.

Procedures Used to Notify the Campus Community:

In the event of a situation that poses an immediate threat to members of the campus community, the campus has various systems in place for communicating information quickly. Some or all of these methods of communication may be activated in the event of an emergency. These methods of communications include the mass notification system PSUAlert, which may include: SMS, e-mail, voice, RSS, Twitter, and Facebook. We may also use verbal announcements within buildings, public address systems, fire alarms, and, posting to websites as described in the Emergency Notification Annex.

Procedures for Disseminating Emergency Information to the Larger Community (i.e., individuals and organizations outside the campus community):

If the campus activates its emergency notification annex in response to a situation that poses an immediate threat to members of the campus community, the appropriate offices at the campus will notify the larger community about the situation and steps the campus has taken to address the emergency. Primarily, campus communicators/news and media relations is responsible for crisis communications and for updating notices on Facebook, Twitter, and other social networking platforms and for maintaining communications with news outlets, distribution of press releases, and scheduling of press conferences.

Enrolling in the University's Mass Notification System PSUAlert:

We encourage employees and students of the campus community to enroll in PSUAlert. All employees and students with an access account and psu.edu e-mail automatically have their psu.edu e-mail enrolled in the system. They are encouraged to visit the PSUAlert portal at <http://psualert.psu.edu> and add phone numbers and additional e-mails. Members of the larger community are encouraged to follow us on Twitter, Facebook, or our websites.

SECURITY OF and ACCESS TO UNIVERSITY PARK FACILITIES

At University Park campus, administrative buildings are open from 8:00 a.m. until 5:00 p.m., Monday through Friday, and academic buildings generally are open from 7:00 a.m. until 11:00 p.m. Academic buildings are scheduled to be open on weekends only as needed. Access to individual classrooms and laboratories is limited to those enrolled in the courses meeting there. Likewise, access to most programs is limited to those enrolled in the program or otherwise authorized access.

Many cultural and athletic events held in University Park facilities are open to the public. Other facilities, such as the bookstore, library, and HUB are likewise open to the public. Only those who have approval are issued keys to a building.

Special Considerations for Residence Hall Access

At the University Park campus, all residence halls operate under a computerized Access Control and Security Monitoring System. Identification cards are coded so that only students who are residents in a particular hall/unit are authorized electronic access entry to that hall; the system denies entry to all unauthorized persons. When any exterior door is left ajar, an audible alarm is activated. Auxiliary Officers are responsible for checking and securing doors, when needed. When a door is malfunctioning, personnel are summoned for immediate repair.

Remember to lock your doors and windows. All residence hall and apartment exterior doors are equipped with locks and with crash bars to ensure a quick emergency exit. Only residents and their invited guests are permitted in the living areas of the residence halls. It is the resident's responsibility to ensure that his/her guest are aware of the University and residence hall policies. Guests are not provided with room keys or door access cards. Guests must be escorted by a resident of the building at all times. All exterior doors are locked twenty-four hours a day. It is the responsibility of residents and staff members to challenge or report individuals who cannot be identi-

fied as residents or the guests of residents. When University Police receive a report of an unescorted person in a residence hall, a police officer is dispatched to identify that person. University Police assigns the largest number of its officers from 10:30 p.m. until 4:00 a.m. Most of these officers spend much of their time patrolling in and around the residence hall complexes. Student auxiliary officers are assigned to patrol the residence hall areas from 5:00 p.m. until 7:00 a.m. During low-occupancy periods such as holidays and scheduled breaks, students are consolidated into designated buildings and gain access via the University's electronic access control system. During the summer when groups who are not regularly associated with Penn State are using the University residence halls, exterior doors are locked twenty-four hours a day. Each guest is issued an identification card that allows him or her to gain access to their assigned building via the electronic access control system. Residence Halls are staffed twenty-four hours a day. University Police personnel also conduct regular checks of the common areas in residence halls.

Special Considerations for Athletic Facility Access

It is the policy of the Pennsylvania State University that all Athletics facilities (spaces typically, but not solely, designated for specific intercollegiate athletic program(s) use) will be accessible only by those University athletes and athletic personnel authorized to access such facilities, and during their normal hours of operation. A valid University identification card is required to gain access.

Recreational facilities (spaces typically, but not solely designated for recreational activity not affiliated with intercollegiate athletic activity) are usable only by those individuals with a valid University student or faculty/staff/retiree identification card, programmed (where applicable) to allow proper access to such facilities, plus one related guest. Access to such facilities will only be authorized during the time each facility is specifically designated as being open/available for use.

While open, these facilities shall have the appropriate staff on duty to oversee operations being conducted at that facility. Any exceptions to this policy must be given in writing, and approved by the appropriate facilities office responsible for athletic and recreational facility access.

Security Considerations for the Maintenance of Campus Facilities

Penn State University is committed to campus safety and security. At University Park, locks, landscaping, and outdoor lighting are designed for safety and security. Sidewalks are designed to provide well-traveled, lighted routes from parking areas to buildings and from building to building. Maps showing the best lit and most traveled routes across campus are available by contacting University Police (<http://www.police.psu.edu/documents/campusnightmap.pdf>).

Environmental Health and Safety, in conjunction with various departments around the University, conducts surveys of University property twice each year to evaluate campus lighting. At University Park, there are over 2,700 walkway, parking lot, and roadway lights that provide illumination on campus.

We encourage community members to promptly report any security concern, including concerns about locking mechanism, lighting, or landscaping to the University Police at 863-1111.



PENN STATE'S RESPONSE TO DOMESTIC VIOLENCE, DATING VIOLENCE, SEXUAL ASSAULT, AND STALKING

The Pennsylvania State University does not discriminate on the basis of sex in its educational programs and sexual harassment nor tolerate sexual violence, which is a type of sex discrimination. Other acts can also be forms of sex-based discrimination and are also prohibited whether gender based or not and include dating violence, domestic violence, and stalking. As a result, The Pennsylvania State University issues this statement of policy to inform the community of our comprehensive plan addressing sexual misconduct; educational programs and procedures that address sexual assault, domestic violence, dating violence, and stalking, whether the incident occurs on or off campus, and how these events are reported to a University official. In this context, The Pennsylvania State University prohibits the offenses of domestic violence, dating violence, sexual assault and stalking and reaffirms its commitment to maintain a campus environment emphasizing the dignity and worth of all members of the university community.

Our Commitment to Addressing Sexual Assault/Rape, Domestic Violence, Dating Violence, and Stalking.

The University does not tolerate sexual misconduct or abuse, such as sexual assault, rape, or any other forms of nonconsensual sexual activity. Sexual misconduct in any form violates the Student code of conduct, University policies (<http://guru.psu.edu/policies/AD85.html>) and may violate federal and state laws. Violations are subject to disciplinary sanctions through the Office of Student Conduct and/or those outlined in applicable University policies (please refer to Policy AD85 Discrimination, Harassment, Sexual Harassment and Related Inappropriate Conduct). Please visit <http://studentaffairs.psu.edu/womenscenter/awareness/rapeandassault.shtml> to review procedures, policies, and protocols for reporting and addressing allegations of student sexual misconduct. Penn State's Sexual Harassment and Assault Reporting and Education website is also intended to provide assistance in obtaining information and identifying resources for anyone who becomes aware of or has experienced sexual harassment and assault at <http://title-ix.psu.edu/>.

- Penn State will pay for all basic sexual assault-related care not covered by the PA Victims Compensation Fund for students who receive care at either University Health Center or Mount Nittany Medical Center.
- A Victim Resource officer is available to all victims of crimes. The VRO will provide support and guidance to victims and enable them to receive advocacy, information, and assistance both judicially and academically.
- University Police are active participants in the Centre County Sexual Assault Response team (SART). This is to ensure victims are provided the appropriate care in a timely fashion and with only well-trained professionals.
- On-campus, confidential counseling services are available to students through Counseling and Psychological Services (CAPS).
- "Trauma Drop" is a special procedure that may enable a victim of sexual assault, dating violence, domestic violence, stalking, or other life traumas to retroactively withdraw from a semester or individual courses.

What is Consent?

Consent must be informed, freely given and mutual. If coercion, intimidation, threats or physical force are used there is no consent. If a person is mentally or physically incapacitated or impaired so that such person cannot understand the fact, nature or extent of the sexual situation, there is no consent: this includes impairment or incapacitation due to alcohol or drug consumption, or being asleep or unconscious. Inducement of incapacitation of another with the intent to affect the ability of an individual to consent or refuse to consent to sexual contact almost always, if not always, negates consent. Silence does not necessarily constitute consent. Whether a person has taken advantage of a position of influence over an alleged victim may be a factor in determining consent.

Defining Sexual Assault/Rape, Domestic Violence, Dating Violence, and Stalking

Sexual Assault: Sexual assault occurs when a person engages in sexual intercourse or deviate sexual intercourse with a complainant without the victim's Effective Consent.

Rape: Is penetration, no matter how slight, of the vagina or anus with any body part or object, or oral penetration by a sex organ of another person, without the consent of the victim. Rape also occurs when a person engages in sexual intercourse with a person by forcible compulsion or the threat of forcible compulsion that would prevent resistance by a person of reasonable resolution, or when a person is unconscious or where the person knows that the victim is unaware that the act is occurring.

Domestic Violence: Includes felony or misdemeanor crimes of violence committed by a current or former spouse of the victim, by a person with whom the victim shares a child in common, by a person cohabitating with or has cohabitated with the victim as a spouse, or by any other person against an adult or youth victim who is protected from that person's acts under the domestic or family violence laws of the jurisdiction. Domestic Violence is currently not specifically defined by Pennsylvania state statute, however family abuse is. Abuse is defined as the occurrence of one or more of the following acts between family or household members, sexual or intimate partners or persons who share biological parenthood:

- (1) Attempting to cause or intentionally, knowingly or recklessly causing bodily injury, serious bodily injury, rape, involuntary deviate sexual intercourse, sexual assault, statutory sexual assault, aggravated indecent assault, indecent assault or incest with or without a deadly weapon.
- (2) Placing another in reasonable fear of imminent serious bodily injury.
- (3) The infliction of false imprisonment pursuant to 18 Pa.C.S. § 2903 (relating to false imprisonment).
- (4) Physically or sexually abusing minor children, including such terms as defined in Chapter 63 (relating to child protective services).
- (5) Knowingly engaging in a course of conduct or repeatedly committing acts toward another person, including following the person, without proper authority, under circumstances which place the person in reasonable fear of bodily injury. The definition of this paragraph applies only to proceedings commenced under this title and is inapplicable to any criminal prosecutions commenced under Title 18 (relating to crimes and offenses).

Dating Violence: Means violence committed by a person—(a) who is or has been in a social relationship of a romantic or intimate nature with the victim; and (b) where the existence of such a relationship will be determined based on a consideration of the following factors:

- (i) The length of the relationship.
- (ii) The type of relationship.
- (iii) The frequency of interaction between the persons involved in the relationship.

Dating Violence is currently not specifically defined by Pennsylvania state statute.

Stalking: Means engaging in a course of conduct directed at a specific person that would cause a reasonable person to—(a) fear for his or her safety or the safety of others; or b) suffer substantial emotional distress. A person commits the crime of stalking when the person either:

- (1) engages in a course of conduct or repeatedly commits acts toward another person, including following the person without proper authority, under circumstances which demonstrate either an intent to place such other person in reasonable fear of bodily injury or to cause substantial emotional distress to such other person; or
- (2) engages in a course of conduct or repeatedly communicates to another person under circumstances which demonstrate or communicate either an intent to place such other person in reasonable fear of bodily injury or to cause substantial emotional distress to such other person.

What to do if you have been the victim of sexual assault, dating violence, domestic violence or stalking

After an incident of sexual assault, it is important to seek medical attention as soon as possible. In Pennsylvania, evidence may be collected even if a victim chooses not to make a report to law enforcement. It is important that victims of sexual assault not bathe, douche, smoke, change clothing or clean the bed/linen/area where they were assaulted if the offense occurred within the past 96 hours so that evidence, as may be necessary to the proof of criminal activity, may be preserved. In circumstances of sexual assault, if victims do not opt for forensic evidence collection, health care providers can still treat injuries and take steps to address concerns of pregnancy and/or sexually transmitted disease.

Victims of sexual assault, domestic violence, stalking, and dating violence are encouraged to also preserve evidence by saving text messages, instant messages, social networking pages, other communications, and keeping pictures, logs or other copies of documents, if they have any, that would be useful to University hearing boards/investigators or police. Although the university strongly encourages all members of its community to report violations of this policy to law enforcement, it is the victim's choice whether or not to make such a report, and victims have the right to decline involvement with the police. Whether a victim reports the crime to the police, or not, if the alleged offender is a member of the University community, the victim has a right to proceed to seek University discipline against the offender as explained in more detail at AD85.

To criminally report an incident involving a sexual assault, domestic violence, stalking, and dating violence, contact the Penn State University Police/Public Safety Department. The University will assist any victim with notifying local police if they so desire. A victim of domestic violence, dating violence, sexual assault or stalking who

proceeds through the criminal process has the following rights:

- To receive information concerning available services for victims;
- To be notified of certain significant actions and proceedings pertaining to your case;
- To be accompanied at all public criminal proceeding by a victim advocate, family member or another person;
- In cases involving personal injury crimes, burglary, and crimes relating to driving under the influence which involved bodily injury, the victim may offer prior comment on the potential reduction or dropping of any charge or changing of a plea;
- To offer prior comment on the sentencing of a defendant to include the submission of a written and/or oral victim impact statement;
- To be restored, to the extent possible, to the pre-crime economic status through restitution, compensation, and the return of property;

If personal injury results from the incident, and the offender is sentenced to a state correctional facility, the victim has the opportunity to provide prior comment on and to receive state post sentencing release decisions (work release, parole, pardon, or community treatment center placement) and to be provided immediate notice of escape of the offender;

If personal injury occurs from the incident and the offender is sentenced to a local correctional facility, the victim has the right to receive notice of release of the offender (including work release, furlough, parole, community treatment center placement) and to be provided with immediate notice of the escape of the offender;

Where the offender is subject to a PFA order and is committed to a local correctional facility for a violation of the order or for a personal injury crime against a victim protected by the order, the victim has the right to receive immediate notice of the release of the offender on bail;

When an offender is committed to a mental health facility from a state correctional institution, the victim has the right to notice of the discharge, transfer, or escape of the offender from the mental health facility; and

The victim has the right to have assistance in the preparation of, submission of and follow-up on financial assistance claims to the Crime Victim's Compensation Program.

Moreover, to the extent of the victim's cooperation and consent, university offices, will work cooperatively to ensure that the complainant's health, physical safety, work and academic status are protected, pending the outcome of a formal university investigation of the complaint. For example, if reasonably available, a complainant may be offered changes to academic, living, or working situations in addition to counseling, health services and assistance in notifying appropriate local law enforcement. Additionally, in most cases and consistent with other federal law, personal identifiable information about the victim will be treated as confidential and only shared with persons with a specific need to know who are investigating/adjudicating the complaint or delivering resources or support services to the complainant. The University does not publish the name of crime victims nor house identifiable information regarding victims in the campus police departments Daily Crime Log or online. Victims may request that directory information on file be removed from public sources by completing a Request to Withhold Directory Information form posted on the Office of the University Registrar's website at http://www.registrar.psu.edu/student_forms/withhold_dir_info.pdf.

Risk reduction, warning signs of abusive behavior and future attacks

No victim is EVER to blame for being assaulted or abused. Unfortunately, studies show that a person who is the victim of sexual or dating violence is more likely to be re-victimized. Below are some tips to help reduce your risk, to recognize warnings signs of abusive behavior and how to reduce the risk of a potential attack.

Warning Signs of Abusive Behavior

Domestic and dating abuse often escalates from threats and verbal abuse to violence. And, while physical injury may be the most obvious danger, the emotional and psychological consequences of domestic and dating violence are also severe. Warning signs of dating and domestic violence include:

1. Being afraid of your partner.
2. Constantly watching what you say to avoid a “blow up.”
3. Feelings of low self-worth and helplessness about your relationship.
4. Feeling isolated from family or friends because of your relationship.
5. Hiding bruises or other injuries from family or friends.
6. Being prevented from working, studying, going home, and/or using technology (including your cell phone.)
7. Being monitored by your partner at home, work or school.
8. Being forced to do things you don’t want to do.

Help Reduce Your Risk and Avoid Potential Attacks

If you are being abused or suspect that someone you know is being abused, speak up or intervene.

1. Get help by contacting the Counseling Center or Health Center for support services
2. Learn how to look for “red flags” in relationships so you can learn to avoid some of those characteristics in future partners
3. Consider making a report with Campus Police and/or the Title IX Coordinator and ask for a “no contact” directive from the University to prevent future contact
4. Consider getting a protection from abuse order or no contact order from a local judge or magisterial justice
5. Learn more about what behaviors constitute dating and domestic violence, understand it is not your fault, and talk with friends and family members about ways you can be supported
6. Trust your instincts—if something doesn’t feel right in a relationship, speak up or end it

Sexual Assault Prevention (From RAINN)

- Be aware of rape drugs
- Try not to leave your drink unattended
- Only drink from un-opened containers or from drinks you have watched being made and poured
- Avoid group drinks like punch bowls
- Cover your drink. It is easy to slip in a small pill even while you are holding your drink. Hold a cup with your hand over the top, or choose drinks that are contained in a bottle and keep your thumb over the nozzle

- If you feel extremely tired or drunk for no apparent reason, you may have been drugged. Find your friends and ask them to leave with you as soon as possible
- If you suspect you have been drugged, go to a hospital and ask to be tested
- Keep track of how many drinks you have had
- Try to come and leave with a group of people you trust
- Avoid giving out your personal information (phone number, where you live, etc.). If someone asks for your number, take his/her number instead of giving out yours

Traveling around campus (walking)

- Make sure your cell phone is easily accessible and fully charged
- Be familiar with where emergency phones are installed on the campus
- Be aware of open buildings where you can use a phone
- Keep some change accessible just in case you need to use a pay phone
- Take major, public paths rather than less populated shortcuts
- Avoid dimly lit places and talk to campus services if you believe that lights need to be installed in an area
- Avoid putting music headphones in both ears so that you can be more aware of your surroundings, especially if you are walking alone
- Walking back from the library very late at night is sometimes unavoidable, so try to walk with a friend
- Carry a noisemaker (like a whistle) on your keychain
- Carry a small flashlight on your keychain
- If walking feels unsafe, try calling campus security

University Procedures for Responding to Reports of Sexual Assault, Domestic Violence, Dating Violence, and Stalking

You have other options In addition to, or in the alternative to, contacting University Police regarding sexual assault, domestic violence, dating violence, and stalking.

Concerns about conduct by a student or student group that may violate this Policy may also be reported to:

Danny Shaha, Senior Director, Office of Student Conduct
and Deputy Title IX Coordinator
120 Boucke Building, University Park, PA 16802
Phone: 814-863-0342
Email: jds49@psu.edu

Concerns about conduct by an employee or third-party that may violate this Policy may also be reported to the Affirmative Action Office / Title IX Coordinator at:

Dr. Kenneth Lehrman III, Vice Provost for Affirmative
Action and Title IX Coordinator
328 Boucke Building, University Park, PA 16802
Phone: 814-863-0471
Email: kfl2@psu.edu

Concerns about conduct by a student or student group may also be reported to the Title IX Coordinator in addition to or in lieu of contacting the Deputy Title IX Coordinator.

Concerns about conduct by an employee, third-party or student at the Penn State College of Medicine that may violate this policy should be reported to the College Deputy Title IX Coordinator at:

Kim Lantz Yoder, Equity Officer
Office for Diversity, C1747N
Penn State College of Medicine, 500 University Drive,
Hershey, PA 17033-0850
Phone: 717-531-0003 ext. 283353
Email: kyoder1@psu.edu

Concerns about conduct by an employee, third party or student at the Penn State School of Law that may violate this policy should be reported to the Affirmative Action Office / Title IX Coordinator at:

Dr. Kenneth Lehrman III, Vice Provost for Affirmative
Action and Title IX Coordinator
328 Boucke Building, University Park, PA 16802
Phone: 814-863-0471
Email: kfl2@psu.edu

Concerns about conduct by an employee, third party or student at any Commonwealth Campus or other University location should follow the reporting procedures set forth above and on the University's Sexual Harassment and Assault Reporting and Education website (<http://www.psu.edu/share>).

If you or someone you know is the victim of a sexual assault, the victim has several rights, including:

- The right to report the incident to the University Police or local authorities. The University will assist victims in notifying either the University or local police. Filing a police report does not mean the victim must pursue criminal charges. The victim maintains his or her rights throughout the process.
- In addition to the campus services listed below, several community service organizations can provide counseling, mental health, and other related services to sexual assault victims. Resources and contact information can be found on the Sexual Harassment and Assault Reporting and Education website at <http://www.psu.edu/share>.

Resources:

- **Center for Women Students** – advocacy, referrals, counseling, academic accommodation, and education (www.studentaffairs.psu.edu/womenscenter)
- **Affirmative Action** – Title IX Coordinator, diversity education services (www.psu.edu/dept/aaoffice)
- **University Health Services** – confidential medical services (www.studentaffairs.psu.edu/health/services/)
- **Residence Life** – support, residence hall accommodation, and referrals (www.sa.psu.edu/rl)
- **Counseling and Psychological Services** – confidential counseling, support, and referrals (www.sa.psu.edu/caps)
- **Office of Student Conduct** – support, referrals, and resolution of complaints (<http://studentaffairs.psu.edu/conduct>)
- **University Police & Public Safety** – safety, support, and referrals (www.police.psu.edu)

- **Employee Assistance Program** – counseling for faculty/staff (www.magellanassist.com)
- **Victim Witness Advocate** – court accompaniment
- **Centre County Resources** – shelter, support groups, counseling (listed in blue pages of phone book under “abuse”)
- **Penn State Office of Human Resources** – (www.ohr.psu.edu)
- **Pennsylvania Coalition Against Rape** – 24-hour hotline (1-800-692-7445) (www.pcar.org)
- **Pennsylvania Coalition Against Domestic Violence** – 24-hour hotline (1-800-932-4632) (www.pcadv.org)

- If a victim of a sexual assault or relationship violence incident requests a change in her or his living arrangements or academic schedule, the Office of Student Conduct and other offices at the University will assist the individual with making these changes, as long as they are reasonably available.

The following information provides steps to follow should a sexual assault occur:

- Get to a safe place as soon as possible!
- Try to preserve all physical evidence – the victim should not bathe, shower, brush teeth, douche, use the toilet, or change clothing until s(he) has a medical exam. Contact a close friend or relative, if available, who can provide support and accompany the victim to the medical exam and/or police department. Advocates from the Centre County Women's Resource center are available to the victim to provide support.
- Get medical attention as soon as possible – an exam may reveal the presence of physical injury that the victim is unaware of. Following a sexual assault, antibiotics are typically given at the time of the exam to help prevent the victim from acquiring certain sexually transmitted diseases. Emergency contraception is provided to all female victims at risk of pregnancy from the assault (if the victim presents within 120 hours). If the victim reports memory loss, loss of consciousness or other circumstances suspicious for a drug-facilitated assault, a urine test may be done if the victim presents within 96 hours. Some of the commonly used “date rape” drugs, however, are only detectable in the urine for six to eight hours after ingestion.
- Contact the police – Sexual assault is a crime, it is vital to report it. It is important to remember that reporting a crime is not the same as prosecuting the crime. The decision to prosecute may be made at another time. Final decision to prosecute is determined by the District attorney.
- Consider talking to a counselor – Seeing a counselor may be important in helping the victim understand her/his feelings and begin the process of recovery.

Internal Disciplinary Procedures that will be followed once an incident of Domestic Violence, Dating Violence, Sexual Assault, or Stalking has been reported

Sexual misconduct and relationship violence, in any form, violates the Student Code of Conduct, University policy 85, DISCRIMINATION, HARASSMENT, SEXUAL HARASSMENT AND RELATED INAPPROPRIATE CONDUCT (<http://guru.psu.edu/policies/ad85.html>), and may violate federal and state laws. Violations of this policy are also subject to disciplinary sanctions through the Office of Student Conduct, Affirmative Action Office, and/or the Office of Human Resources.

Reports or complaints alleging sexual assault, domestic violence, dating violence, and stalking are processed on the basis of the status of the alleged perpetrator (respondent). Reports or complaints against any University employee (faculty, staff, administrator or executive) will be processed by the Affirmative Action Office. Reports or complaints alleging discrimination or harassment of any member of the University community by individuals who are not members of the University community (e.g., third party vendors, contractors, and guests) will also be processed by AAO. Reports or complaints alleging discrimination or harassment by a student will be processed by the Office of Student Conduct (OSC). Confidential reports can be made through Counseling and Psychological Services (www.sa.psu.edu/caps).

The Senior Director of the Office of Student Conduct (OSC) has been designated as a Deputy Title IX Officer for the University by the Title IX Coordinator. As such, all incidents involving an alleged violation of Title IX involving students should be forwarded to the Senior Director of OSC for review. When received by the Senior Director, the information will be reviewed and the level of investigation, accommodation, and/or remedial measures already implemented as well as the potential need for a timely warning will be assessed. The Senior Director will also ensure that accommodations, resources, rights, and options are addressed with the complainant.

At any time, when a complainant expresses an interest in exploring options within the Office of Student Conduct, the process will begin with communication with the Complainant. This conversation will most often be held with an Associate Director of Student Conduct and will occur in a prompt and timely fashion.

Possible outcomes of this initial discussion include the following:

1. The incident is documented, but no further action is determined to be necessary by the Senior Director. Appropriate accommodation to the complainant and appropriate remedial measures will still be applied; or
2. Complainant wishes for the University to proceed with an initial investigation to include contact with the respondent. The complainant will be eligible for appropriate accommodations, and appropriate remedial measures will be applied. The complainant will also be informed that if at any point in the future the complainant wishes for formal action, the complainant can request it at that time. A timeline for next steps will be reviewed, and when appropriate, additional meetings scheduled; or
3. The complainant requests that the University proceed with the formal University conduct process. The complainant will be eligible for appropriate accommodations, and appropriate remedial measures will be considered. Additional information necessary to proceed with the formal process will be obtained. A

timeline for next steps will be reviewed and when appropriate, additional meetings scheduled.

In any of the three outcomes listed above, appropriate documentation will be completed for submission to the Title IX Coordinator and the OSC Title IX database.

There may be cases in which the information provided requires that action be taken (including initiating informal or formal action), irrespective of the desires of the complainant and in such cases, the University will take that action. In those cases, every effort will be made to explain to the complainant the rationale for moving forward and the relevant procedures and timelines, and to keep them abreast of the process. At no time, however, will the complainant be compelled to participate in the process.

Initial Investigation

When an initial investigation is pursued, OSC staff will contact the respondent to schedule a meeting. In that meeting, OSC staff will review the following:

1. rights of the respondent,
2. the allegations,
3. the respondent's perspective on the allegations,
4. actions requested by the complainant, if any, and
5. actions recommended by the University.

If, following the discussion, the respondent agrees to honor the complainant's and University's requests, and the University believes that the complainant's requests are reasonable and appropriate, steps will be taken to complete those actions in a prompt and timely manner. Examples of such actions include, but are not limited to, counseling for the respondent, commitment to change/end the behavior, restricted activity, schedule modification, and educational intervention. The complainant will be notified of the respondent's agreement and appropriate documentation will be completed for submission to the Title IX Coordinator and the Title IX database. No reportable disciplinary record is created. However, the information will remain on file should future concerns be reported.

When the respondent is not willing to honor the requests of the complainant or the University, a follow-up meeting will be held with the complainant to determine next steps. Although selecting the initial investigation initially, the complainant may wish to modify the request to a formal process.

Internal Disciplinary Procedures for institutional disciplinary action in cases of alleged Domestic Violence, Dating Violence, Sexual Assault and Stalking

Formal Student Conduct Process

When cases involving domestic violence, dating violence, sexual assault, or stalking are reported and a formal conduct process is initiated, the University will provide a prompt, fair, and impartial investigation and resolution.

Reports will be investigated (if applicable) and managed by professional staff or University Conduct Board members who have been trained annually on issues related to domestic violence, dating violence, sexual assault, stalking, and victimization, and on how to conduct an investigation and hearing process that protects the safety of victims and promotes accountability.

If it is determined that it is appropriate and necessary, a formal investigation process prior to the determination of charges and sanctions will occur. When a formal investigation process is initiated, the assigned investigator will attempt to interview all parties who have substantive information to share about the allegations and will attempt to gather all available documentation. An investigative packet containing the information received and collected will be compiled.

If, after factual investigation, charges are assigned and the respondent accepts responsibility, both the respondent and complainant (hereafter “party”) have the opportunity to request a sanction review.

If the respondent contests the charges (i.e., denies responsibility for one or more of the assigned charges), the matter will be forwarded to a hearing. The standard of evidence in a hearing is a more likely than not, a preponderance standard. In other words, the determination is whether it is more likely than not that a violation occurred.

In a hearing, both parties may question all witnesses. Questions may also be posed by each party to the other; however, questioning of the other party will be permitted only through the Hearing Chair.

The respondent and complainant may each be assisted by an advisor. “Advisor” is defined as any person selected by the respondent or complainant to assist and accompany them through the University conduct process (including Disciplinary Conferences, Administrative/University Conduct Board Hearings, Sanction Reviews, and formal Appeals). Parties may choose from a list of trained advisors available at the Office of Student Conduct website, choose a non-trained advisor, or may choose to proceed without an advisor. A party shall not select an advisor with the actual or effective purpose of disrupting the proceedings, causing emotional distress to the other party, or otherwise attempting to disrupt the process. The advisor, upon request of either party, may (1) accompany the party in any disciplinary proceeding, (2) advise the party in the preparation and presentation of sharing of information, and (3) advise the party in the preparation of any appeals or sanction reviews. The advisor shall not perform any function in the process other than advising the party and may not make a presentation or represent the party. The parties are expected to ask and respond to questions on their own behalf, without representation by their advisor. The advisor may consult with their advisee quietly or in writing, or outside during breaks, but may not speak on behalf of the advisee. Delays in the conduct process will not normally be allowed due to scheduling conflicts with advisors.

Each party will be allowed to submit a statement of facts prior to the hearing that will be added to the hearing packet.

Each party will also be allowed to submit an impact statement that will be reviewed by the UCB should the respondent be found responsible for violating the Code.

Both the respondent and the complainant will be notified simultaneously of the hearing outcome once the written outcome has been submitted to the Case Manager by the hearing chair.

If suspension or expulsion is either assigned or was within range for the charges, both the complainant and the respondent will have the opportunity to file an appeal.

At the conclusion of any appeal process, both the complainant and the respondent will be notified simultaneously, in writing, of the outcome of the process.

Staff/Faculty Process

The Affirmative Action Officer, or a designee, will be responsible for investigating reports of sexual assault, domestic violence, dating violence, and stalking, and making factual findings, applying a preponderance of the evidence standard, with respect to whether a policy violation occurred. Following the fact finding and investigative process, AAO will prepare a written report with findings and remedial recommendations. The investigation will be complete within 60 days, and the report of findings will be simultaneously provided to the accused and the accuser, and, in appropriate circumstances, may be provided to the immediate supervisor of the accused. Along with the report of findings, both parties will be provided the opportunity to attend or participate in a disciplinary meeting which will occur after the investigative report is finalized. Both the accused and the accuser have the right to have an advisor of their choice present at this disciplinary meeting. The meeting will be conducted by an official(s) who receives annual training in investigation and hearing processes, as well as on issues related to domestic violence, dating violence, sexual assault, and stalking. Following the disciplinary meeting, both the accused and the accuser will receive simultaneous notice of the final disciplinary sanctions. Both the accused and the accuser may appeal the final disciplinary sanctions.

University Policy HR79 Staff Grievance Procedures will be followed throughout the appeal process. To read the entire policy, please go to <http://guru.psu.edu/policies/OHR/hr79.html>. At the conclusion of any appeal process, both the accused and the accuser will be notified simultaneously, in writing, of the outcome of the appeal and sanctions.

Burden of Proof

As noted, the standard of evidence for determining whether a violation occurred, specifically when investigating alleged domestic violence, dating violence, sexual assault, and stalking, is “preponderance of evidence.”

Possible sanctions or protective measures Penn State may impose following a final determination of an institutional procedure

Following a final determination of an institutional procedure regarding domestic violence, dating violence, sexual assault or stalking, the University may impose the following sanctions or protective measures:

Students

- Sanctions up to and including expulsion from the University
- Administrative Directives for No Contact: (Students may request a Directive for No Contact through the Senior Director of Office of Student Conduct or the Director of Residence Life)
- Restriction from portions of campus
- Change in housing assignment
- Change in course assignment
- Mandated Psychological Evaluation and/or Counseling
- Mandated Education

Faculty/Staff

- Employee termination from the University
- Unpaid suspension
- Restrictions from all or portions of campus

- Change in working facility
- Mandated education
- Written reprimand in personnel file
- Removal from classroom teaching
- Tenure revocation
- Withhold salary increase (from one to several years)
- Removal of endowed chair
- Removal of emeritus status
- Removal of graduate school status
- Termination of research project funding
- Removal from administrative position

Protecting the confidentiality of victims

All members of the University Conduct Board, case managers, and investigators have been trained in confidentiality of student records and the provisions of the Family Educational Rights to Privacy Act. Personal identifiable information about the victim will be treated as confidential and only shared with persons with a specific need to know who are investigating/adjudicating the complaint or delivering resources or support services to the complainant. The University does not publish the name of crime victims nor house identifiable information regarding victims in the campus police departments Daily Crime Log or online. Victims may request that directory information on file be removed from public sources by completing a Request to Withhold Directory Information form posted on the Office of the University Registrar’s website at http://www.registrar.psu.edu/student_forms/withhold_dir_info.pdf.

Education and Prevention Programs

The University engages in comprehensive educational programming to prevent domestic violence, dating violence, sexual assault and stalking. Educational programming consists of primary prevention and awareness programs for all incoming students and new employees and ongoing awareness and prevention campaigns for the campus community that:

- Identifies domestic violence, dating violence, sexual assault and stalking as prohibited conduct;
- Defines what behavior constitutes domestic violence, dating violence, sexual assault, and stalking;
- Defines what behavior and actions constitute consent to sexual activity in the Commonwealth of Pennsylvania;
- Provides safe and positive options for bystander intervention that may be carried out by an individual to prevent harm or intervene when there is a risk of domestic violence, dating violence, sexual assault, or stalking against a person other than the bystander;
- Provides information on risk reduction so that students and employees may recognize warning signs of abusive behavior and how to minimize the risk of potential attacks;
- Provides an overview of information contained in the Annual Security Report in compliance with the Clery Act.

The University has developed an annual educational campaign consisting of presentations that include distribution of educational materials to new students; participating in and presenting information and materials during new employee orientation; presenting



programs throughout the year on at least a quarterly basis, including sessions such as:

- Rape Aggression Defense System (RAD) – in collaboration with University Police. A free 12-hour course for enrolled women students through CWS’ Giardini Endowment.
- Sexual Assault Familiarization Exchange System (SAFE) – in collaboration with University Police. A free 2-hour course by request.
- Welcome Week/New to Campus Initiative – events with invited speakers to address issues of sexual and gender violence
- Student Affairs Development Day
- Student affairs campus training and inclusion of campus resources from the CWS website: <http://studentaffairs.psu.edu/women-scencer/resources/ccsar.shtml>
- Men Against Violence (MAV) and Peers Helping Reaffirm, Educate and Empower (PHREE) – training to fraternities, sororities, residence life, academic classes, and various events to include community involvement

Sex Offender Registration — Campus Sex Crimes Prevention Act

Megan’s Law

Members of the general public may request community notification flyers for information concerning sexually violent predators in a particular community by visiting the chief law enforcement officer in that community. In jurisdictions where the Pennsylvania State Police is the primary law enforcement agency, members of the general public may make such requests at the local Pennsylvania State Police Station in that community. This information is also available on the Pennsylvania State Police “Megan’s Law” website (<http://www.pameganslaw.state.pa.us>).

CAMPUS SECURITY POLICIES; CRIME PREVENTION AND SAFETY AWARENESS PROGRAMS

In addition to the many programs offered by the University Police and other University offices, the University has established a number of policies and procedures related to ensuring a reasonably safe campus community. These policies include:

Behavioral Threat Management Team

In order to enhance emergency preparedness and prevention efforts, Penn State has established a Behavioral Threat Management Team (BTMT). The objective of the BTMT is to systematically identify, evaluate, and manage potentially threatening situations, including persons of concern, at the University. The multidisciplinary team is composed of people from University campuses and surrounding communities.

In addition to the BTMT at the University Park campus, each Commonwealth campus also has a team responsible for managing concerning situations on their respective campuses. While the Commonwealth campus BTMTs may consult with the University Park team at any time, more serious and complex cases are managed in consultation with the University Park BTMT.

If you would like further information about the BTMT, please visit the Behavioral Threat Management website at <http://btmt.psu.edu>.

Weapons Policy

The possession, carrying, and use of weapons, ammunition, or explosives is prohibited on University-owned or -controlled property.

The only exception to this policy is for authorized law enforcement officers or others, specifically authorized by the University. At some campuses, University Police provides storage facilities for the personal weapons of members of the University community. Failure to comply with the University weapons policy will result in disciplinary action against violators.

Pennsylvania Crime Victim Rights

Your Rights as a Crime Victim:

As a victim of crime in the Commonwealth of Pennsylvania, you have rights. Also, you can expect to receive information, practical and emotional support, and be able to participate in the criminal justice process. These standards were created to make sure that you are treated with dignity and respect at all times, regardless of your gender, age, marital status, race, ethnic origin, sexual orientation, disability, or religion.

You have the right to be told...

- About basic services available to you in your county
- About certain court events, including information on bail, escape of offender, release of an offender
- About the details of the final disposition of a case

You have the right to receive...

- Notice of the arrest of the offender
- Information about restitution and assistance with compensation
- Accompaniment to all criminal proceedings by a family member, a victim advocate, or a support person

You have the right to provide input...

- Into the sentencing decision and to receive help in preparing an oral and/or written victim impact statement
- Into post-sentencing decisions

Please see the resource list for local victim assistance options.

For more information about your detailed rights or to file a complaint if you believe your rights have been violated, please contact: The Pennsylvania Crime Victims Office at http://www.portal.state.pa.us/portal/server.pt/community/pcv_home/14554

*Source: Pennsylvania Crime Victims (2012). "Your Rights as a Crime Victim" at www.portal.state.pa.us/portal/server.pt/community/your_rights_as_a_crime_victim/14555.

Student Conduct

The Office of Student Conduct

The mission of the Office of Student Conduct is to promote a safe, orderly, and civil University community and to encourage and inspire students to become good citizens by engaging in personal responsibility, ethical decision making, and demonstrating respect for the rights and safety of others.

The Student Code of Conduct

The Office of Student Conduct is responsible for administering the Student Code of Conduct, which articulates the behavioral standards and the equitable procedures employed by the University to respond to allegations of student misconduct.

The Code of Conduct is administered at all Penn State campuses on University property (excluding the Law School) and may also address off-campus student misconduct when a student's behavior affects a Substantial University Interest.

Students who are found responsible for violations may be subject to sanctions ranging from Conduct Conversation or Conduct Probation to Suspension or Expulsion from the University. Students residing in University housing may also lose the privilege of living on campus.

In most cases, the Office of Student Conduct will also assign developmental and educational interventions designed to promote greater awareness and improved decision making for students and to further deter future misconduct.

In instances where a student's conduct, behavior, or other objective evidence provides a reasonable cause to believe a student is an immediate and significant threat to the health or safety of other persons, to property of the University or others, to disrupting essential campus operations, or to the student's own health or safety, the Office of Student Conduct may assign an Interim Suspension and/or other interim actions that are designed to protect the health and safety of the community and members therein.

The Office of Student Conduct is also responsible for conducting pre-admission, re-enrollment, and continuing enrollment reviews for prospective, returning or current students with known behavioral problems. Any individual or entity may submit reports alleging student misconduct to the Office of Student Conduct or the OSC designee at the campus where the incident occurred.

The Office of Student Conduct also provides outreach programming designed to inform and educate students and to promote the Penn State Principles. Please visit the Office of Student Conduct



website at <http://studentaffairs.psu.edu/conduct>, where you can find the Student Code of Conduct, Parental Notification Policy, Student Records Policy, and links to all policy and procedural guidelines related to the Student Conduct process. Students are encouraged to take the “Know the Code” quiz located on the Student Conduct website.

Additional Information Regarding the Student Code of Conduct

The Pennsylvania State University is obligated to provide all students with the University regulations, policies, and procedures governing student conduct. Penn State policies and procedures, including the Student Code of Conduct and the Off-Campus Misconduct Policy, are published on the Student Conduct website, <http://studentaffairs.psu.edu/conduct>.

If you have additional questions, special needs, or wish to request a hard copy of this information, please contact the Office of Student Conduct at University Park.

This publication, as well as University regulations and policies and procedures governing student conduct, is available on the “Policies and Crime Statistics” channel of the Penn State Portal, <https://portal.psu.edu>.

Parental Notification Policy

The University reserves the right to report student discipline information to the parents or legal guardians of students.

Federal legislation authorizes Penn State to disclose disciplinary records concerning violations of the University’s rules and regulations governing the use or possession of alcohol or controlled substances that involve students who are under the age of 21, regardless of whether the student is a dependent.

The University may also report non-alcohol or drug-related incidents to parents or legal guardians of dependent students under circumstances described in the Student Guide to General University Policy and Rules. See the following website for the University Code of Conduct and additional information concerning Parental Notification: <http://studentaffairs.psu.edu/conduct>.

Missing Student Policy

The Higher Education Opportunity Act of 2008 (effective August 14, 2008) requires any institution participating in a Title IV federal student financial aid program that maintains on-campus housing facilities to establish a missing student notification policy and related procedures. The following policy and related procedures is Penn State’s official Missing Student Policy.

When it is determined that a student is apparently missing from the University, staff at Penn State, in collaboration with campus and local law enforcement, will be guided by this Missing Student Policy and standing operating procedures, to locate the student.

The entire Missing Student Protocol can be found on the Student Affairs website at: http://studentaffairs.psu.edu/conduct/pdf/missing_student_protocol.pdf. Along with the Missing Student Protocol, the formal SY42 Policy can be found at: <https://guru.psu.edu/policies/SY42.html>.

Provisions

NOTIFICATIONS

The Missing Student Policy requires anyone who believes a Penn State student is missing to immediately notify specific staff in the University administration, University Police, and local law enforcement. Specifically, staff in the Office of Residence Life, Assistant Vice President for Student Affairs and Student and Family Services, University Police Services and Public Safety, and the senior Student Affairs professional at a campus, should be contacted so that they can coordinate efforts to locate the student.

Penn State has developed a list of titles of persons and offices to which students, employees, or others can contact if they have reason to believe a student who lives in on-campus student housing has been missing for twenty-four hours. The list of positions, offices, and contact information to be utilized if a student is reported missing from campus is included at the end of this policy (University Contacts for Missing Students).

In addition to contacting these specific offices, anyone who has a concern that a student is missing should alert any Penn State employee who they think will aid in the investigation of a student disappearance. Beyond notifications made by campus employees to University staff, University Police, or campus security, in the absence of a campus police or campus security department, the University must refer immediately any missing student report to the local law enforcement agency that has jurisdiction in the geographical areas around the specific campus location.

REGISTERING AND NOTIFYING MISSING STUDENT CONTACTS

In accordance with this policy, students will be notified annually that each residential student of the University has the option to confidentially designate an individual to be contacted by the Penn State administration no later than twenty-four hours after the time that it is determined the student is missing.

Penn State provides each student with the means and opportunity to register their confidential missing student contact information by logging into the University’s eLion system and filling out the Address and Contact Information form. This missing student contact person can be anyone. This option is provided to students even if a student has already registered an individual as a general emergency contact. The student also has the option to identify the same individual for both their general emergency contact and missing student contact.

Missing student contact information is registered confidentially. This information is private and only accessible to Penn State employees who are authorized campus officials. This information will not be disclosed to others, with the exception to law enforcement personnel in the furtherance of a missing student investigation.

Penn State will notify the missing student’s parents or guardian in addition to the person identified as the missing student’s contact person of any student who is under 18 years of age and not an emancipated individual. The University will make contact no later than twenty-four hours after the time that the student is determined to be missing.

NOTIFYING LAW ENFORCEMENT

Penn State will also notify the appropriate local law enforcement agency of the missing student unless the local law enforcement agency was the entity that made the determination that the student was missing. This notification will include any missing student who lives in on-campus housing regardless of age or status, and regardless of whether he or she has registered a confidential missing student or general emergency contact person. This notification will be made no later than twenty-four hours after the time that the student is determined missing.

If the campus law enforcement personnel or campus security department has been notified that a student is suspected missing, and makes a determination that a student who is the subject of a missing person report has been missing for more than twenty-four hours, Penn State staff will initiate emergency contact procedures as outlined in Penn State's policy and protocol.

UNIVERSITY CONTACTS FOR MISSING STUDENTS

University Park Campus

Assistant Vice President for Student Affairs
Penn State University
129 Boucke Building
University Park, PA 16802
814-863-4926

Director, University Police
Penn State University
25 Eisenhower Parking Deck
University Park, PA 16802
814-863-1111

Senior Director of Residence Life
Penn State University
University Park, PA 16802
201 Johnston Commons
814-863-1710

Daily Crime and Fire Log

University Police & Public Safety maintains a combined Daily Crime and Fire Log of all incidents reported to them. The University Police department publishes this log every day, which is available for public viewing on its website at <http://www.police.psu.edu/psu-police/daily-crime-log.cfm>. This log identifies the type, location, date and time reported, date and time occurred and current disposition of each incident reported to University Police. Local news media may contact University Police to acquire information from this log. Information deemed newsworthy may be published by the news media.

The Daily Crime and Fire Log for the most current sixty days is available for viewing during regular business hours in the lobby of the Police & Public Safety building located at 30 Eisenhower Parking Deck. Any portion of the Daily Crime and Fire Log that is older than 60 days will be made available within two business days of a request for public inspection.

Crime Prevention and Safety Awareness Programs

In an effort to promote safety awareness, the University Police maintains a strong working relationship with the Penn State community. This relationship includes offering a variety of safety and security programs and services and crime prevention programming. If you or your organization would like to request a specific program, please contact the Crime Prevention and Community Education officer at 814-865-8571. Below are some of the programs and services available.

Acts of Intolerance Jeopardy

This interactive Jeopardy game is a fun way to encourage students to participate in teams and learn about racism, sexism, ableism, and religion oppression.

Alcohol Awareness

This presentation focuses on the effects of alcohol and the laws and consequences. Fatal Vision goggles are used as part of this demonstration.

Are You Ready? Emergency Preparedness

This proactive program will provide you with useful safety tips to help you and your family plan and be prepared in case of an emergency. Planning ahead can help you to remain calm and have a plan of action in any situation, from a minor incident to a major catastrophe.

Bicycle Rodeos

Trained police bicycle officers provide information on bicycle rules and safety, as well as demonstrating various riding techniques.

Blurred Lines/DUI Awareness

This presentation covers Driving Under the Influence, including laws, detection, arrest procedures, and prosecution. Participants are able to observe officers demonstrate actual field sobriety tests that are given to intoxicated motorists in the course of the officer's duty.

Distracted Driving Education

Being great at multi-tasking is an asset but can cause problems if you are on the roadway. This program focuses on safety while driving to include not texting and driving, defines the laws in Pennsylvania and provides relevant statistics.

Domestic Violence

The program provides awareness and statistical information on the common challenges victims face with relationship/domestic violence.

Drug and Alcohol Match

This interactive match game encourages students to participate and learn about drug and alcohol use, abuse and statistics.

Drug Awareness and Recognition

This program outlines the most abused drugs on campus, warning signs of abuse and how these drugs affect students and the community.

Identity Theft

Officers present information and precautions to be taken to minimize the risk of becoming the victim of identity theft.

Officer Interviews

University Police and Public Safety members are available for interviews for individuals' writing papers, conducting research, or working on public safety-related projects. Appointments are preferred.

Operation ID/Engraving

University Police provide engraving tools and instruction to persons interested in marking and identifying valuable items.

Personal Safety in Today's Times

This program offers information and discussion about the latest in practical techniques for protecting yourself and your belongings while at home, at work, and when traveling. This program will help you to create an awareness of possible unsafe scenarios.

Rape Aggression Defense (RAD)

RAD is a comprehensive self-defense system for women. The program includes awareness, prevention, and risk reduction and avoidance, as well as options available to women during a confrontation or attack. The program is twelve hours, taking place over several days.

Ride-A-Long

Participants may ride or walk with an officer on routine patrol for up to a two-hour period to gain firsthand knowledge of police procedures and operations.

Self Awareness and Familiarization Exchange (SAFE)

University Police provide SAFE, a self-defense awareness and familiarization exchange for women. Certified SAFE instructors lead this program. It is not a physical defense program, but rather a method of distributing crime prevention information for individual study. The program is two hours long.

Sexual Assault Prevention

This program covers issues involving sexual assault and corresponding relevant research and statistics.

Safety and Security for Office Personnel

This program offers useful safety guidelines for the workplace, reviews security features typical of campus buildings, and identifies different ways to contact the police. You will learn how to implement a code word, how to deal with irate customers in a safe manner, and how to respond if you encounter an individual with a weapon.

Stay SAFE

None of us want to be confronted by an active shooter, but shootings do happen. What would you do if you heard shots coming from outside your office or classroom or, worse yet, what if someone with a gun came onto your campus and began to fire? Would you know what to do? How to act? How to deal with your fears so you could save your own life and the lives of those around you? Participants who attend this program will know how to answer these questions or where to find the necessary resources.

Theft Prevention

Officers present information and precautions to be taken to minimize the risk of becoming the victim of theft.

Workplace Violence

This program helps managers and supervisors assess employee potential for acting violently in the workplace.

Your Law Enforcement on Campus

Officers are available to discuss police procedures and services available from the Department.

CENTER FOR WOMEN STUDENTS PROGRAMMING

Sexual Assault Awareness

These programs provide definitions of consent, definitions of rape and sexual assault, Pennsylvania law, alcohol information, reporting procedures, community resources, victim rights, and safety procedures (risk reduction/safety planning for victims) and prevention information for men.

Provided 46 programs for 2,507 attendees.

Relationship Violence

These programs provide overviews of emotional, psychological, verbal, and physical abuse, as well as power and control dynamics, Pennsylvania law, community resources, victim rights, and safety planning information.

Provided 46 programs for 622 attendees.

Stalking

These programs provide descriptions of stalking behaviors, Pennsylvania law, and safety planning; and also provide an example of a stalking log.

STUDENT CONDUCT PROGRAMMING

Know the Code

Information about the Student Code of Conduct, alcohol and drug use/misuse, computer software use/misuse, academic integrity, sexual misconduct, general questions.

Provided 58 programs to approximately 2,500 attendees.

Change of Assignments

Information about the most common Student Code of Conduct violations, off-campus misconduct policies, expectations for community living off campus.

Provided 1 program to approximately 1,000 attendees.

Conduct Board Training

Training faculty/staff/student members to serve on the University Conduct Board for students going through the discipline process.

Provided 20 hours of training to 10 attendees.

Student Organization Conduct Committee Training

Trains students to serve on a panel to make decisions on student organizational conduct.

Provided 1 program to 10 attendees.

Title IX

Provides information about Title IX definitions and procedures at the University.

Provided 12 presentations to 322 attendees.

CENTER FOR WORKPLACE LEARNING AND PERFORMANCE

A Day in the Life: Penn State's Response to Domestic Violence in the Workplace

A three-hour training utilizes the powerful true story of a local homicide victim to prepare faculty and staff to effectively address the issue of domestic violence in the workplace.

HEALTH PROMOTION AND WELLNESS, UNIVERSITY HEALTH SERVICES

Alcohol Education Presentations

The purpose of this presentation is to share key alcohol information with students. Topics include: Blood Alcohol Content (BAC), standard drink size, physiological effects of alcohol consumption, sexual assault, and alcohol poisoning. Harm reduction strategies are discussed. Campus resources for alcohol, health, mental health and sexual assault are shared with students. Blood Alcohol Content cards and alcohol poisoning magnets are distributed. Presentations are conducted upon request for student organizations (including fraternities and sororities), athletic teams, and academic classrooms. 2013–2014 – *Provided 33 programs to 2186 attendees.*

Penn State SAFE (Student Alcohol Feedback and Education)

Penn State SAFE is an on-line alcohol education program that uses evidence-based strategies to educate students about alcohol and its effects on the body. All first-year students who are 21 or younger at all Penn State campuses are required to complete the program prior to matriculation.

2013–2014 – *7,582 students at University Park and 6,225 students from all other Penn State campuses completed the program during the implementation periods.*

Penn State AWARE (Sexual Assault Education)

Penn State AWARE is an online sexual violence education program. All first-year students, regardless of age, at all 20 Penn State campuses are required to complete the program prior to matriculation. The program educates students about sexual assault and sexual harassment. The program helps students develop practical skills to keep themselves and their friends safe.

2013–2014 – *7,462 students at University Park and 6,045 students from all other Penn State campuses completed the program during the implementation periods.*

Alcohol Safety Social Marketing Efforts

Blood Alcohol Content (BAC) cards and alcohol poisoning magnets

Blood Alcohol Content (BAC) cards and alcohol poisoning magnets were distributed to every first-year student in the residence halls. The BAC cards include information about: 1) the physiological effects of alcohol at various BAC levels; 2) information about standard drink size; 3) safe drinking strategies; and 4) a BAC table for men and women. The alcohol poisoning card provides information about the signs of alcohol poisoning and how to help someone who has alcohol poisoning. The reader is informed that alcohol poisoning is a medical emergency and should call 911.

Fall 2013 – *Approximately 8,000 BAC cards and 8,000 alcohol poisoning magnets were distributed to first-year students in the residence halls.*

Alcohol Poisoning CATA (Centre Area Transportation Authority) bus card

The bus card provides information about the signs of alcohol poisoning and how to help someone who has alcohol poisoning. The reader is informed that alcohol poisoning is a medical emergency and should call 911. The card is located in every community and campus CATA bus for the entire calendar year (January – December).

PROGRAMS CONDUCTED BY UNIVERSITY POLICE AND PUBLIC SAFETY (3 MOST RECENT YEARS)

2011: **412**

2012: **776**

2013: **272**

PENN STATE UNIVERSITY POLICIES GOVERNING ALCOHOL AND OTHER DRUGS

Penn State's Alcohol and Drug Policy

Federal law requires Penn State to notify all faculty, staff, and students of certain information pertaining to the unlawful possession, use, or distribution of illicit drugs and alcohol on its property or as part of its activities. The information included in this report complies with the notification requirements of the Drug-Free Schools and Communities Act and its implementing regulations.

The University prohibits the unlawful possession, use, manufacture, or distribution of alcohol or controlled substances by students, faculty, staff, and guests in buildings, facilities, grounds, or property controlled by the University or used as part of University activities. For students, this includes the possession or use of alcoholic beverages in any Penn State on-campus undergraduate residence hall buildings regardless of age. At University Park, students are only allowed to possess or consume any beverage containing alcohol in the White Course Apartments following the laws of the Commonwealth of PA. In addition, the smoking of any material is prohibited in all facilities of Penn State University at all locations.

Areas Open to the Public

The Pennsylvania State University prohibits the possession and use of alcoholic beverages in areas open to the public, including areas of buildings open to the public. However, the use of alcoholic beverages, subject to the laws of the Commonwealth, may be permitted at University-sponsored activities in areas designated by, and with the prior approval of, the University Risk Manager at the University Park campus; the Senior Vice President for Health Affairs and Dean of the College of Medicine, Penn State Milton S. Hershey Medical Center; or at other non-University Park locations, the Chancellor or appropriate campus/center executive officer responsible for the area requested.

Private or Closed Areas

The possession and use of alcoholic beverages are prohibited in conference rooms, offices, office reception rooms, closed buildings, and areas of buildings not open to the public or from which the public has been excluded, except: the use of alcoholic beverages, subject to the laws of the Commonwealth, may be permitted in specific private or closed areas designated by, and with the prior approval of, the appropriate person responsible for the area of request.

Education and Research Areas

The Pennsylvania State University specifically prohibits the use, possession, and dispensing of alcoholic beverages in classrooms, lecture halls, laboratories, libraries, research areas, or within buildings, arenas, or areas where athletic events, lectures, or concerts are held, during such events or activities. Permission will not be granted to use or possess alcoholic beverages in a facility that is being used for one of the above functions. (Please consult Policy AD18, Use and Distribution of Alcoholic Beverages, for more information.)

Policies Specific to Faculty and Staff

As a condition of University employment, every employee shall abide by the terms of this policy. Any employee who violates this policy is subject to Penn State sanctions, including dismissal, as well as criminal sanctions provided by federal, state, or local law.

An employee may be required to participate in a drug abuse or drug rehabilitation program. An employee must notify his or her supervisor of any criminal drug conviction for a violation occurring in the University workplace no later than five (5) days after such conviction. Please consult Policy AD33, A Drug-Free Workplace for more information (<http://guru.psu.edu/policies/AD33.html>)

Policies Specific to Penn State Students

Any student who violates this policy is subject to disciplinary action including sanctions as outlined in the Student Code of Conduct in addition to any penalties resulting from violating local, state, and or federal law. Disciplinary sanctions may include: Students who are found responsible for violations may be subject to sanctions ranging from Disciplinary Warning or Disciplinary Probation to Suspension or Expulsion from the University. Students residing in University housing may also lose the privilege of living on campus for violating University rules and regulations or conditions of the housing contract. In most cases, the Office of Student Conduct will also assign developmental and educational interventions designed to promote greater awareness and improved decision making for students and to further deter future misconduct. Effective fall semester 2010, Penn State students who have a first-time alcohol violation on or off campus or an alcohol-related visit to the emergency department at Mt. Nittany Medical Center are required to complete the BASICS (Brief Alcohol Screening and Intervention for College Students) program administered by University Health Services. Students who are sanctioned by Penn State's Office of Student Conduct and Residence Life are required to pay a \$200 fee.

Residence Life Alcohol Policy

Alcohol And Illegal Substances

ALCOHOL POLICY

The possession and/or consumption of alcoholic beverages is prohibited in all Penn State on-campus undergraduate residence hall buildings, including Nittany Apartments and Eastview Terrace.

It is a violation of state law and university policy for a student under 21 years of age to attempt to purchase, consume, possess, or transport alcoholic beverages. It is unlawful to sell, furnish, and give alcoholic beverages or to permit alcoholic beverages to be sold, furnished, or given to any minor.

It is against residence hall policy for there to be any tailgating activities in the residential quad areas or residence hall parking lots where alcoholic beverages are being served on any football game/event weekend including all home football games, Football Eve, Fourth Fest, and the Spring Blue and White weekend. Students tailgating with alcoholic beverages in these defined areas will be confronted and will likely be charged with "open containers in an unauthorized area."

Residents will be held responsible for activities that occur in their rooms, and will be referred to the Office of Residence Life, the Office of Student Conduct, and/or University Police if guests are violating the on-campus alcohol policies listed above.

Failure to comply with the direction or to present identification to a University official acting in the performance of his/her duties is a violation of the Student Code of Conduct and will result in a referral to the Office of Residence Life or the Office of Student Conduct.

It is against the Student Code of Conduct to supply false information, such as name, age, etc., to University officials who are acting in the performance of their duties.

ILLEGAL SUBSTANCES (DRUGS)

It is a violation of state law and University policy to illegally possess, use, distribute, manufacture, sell, or be under the influence of other drugs. Students who violate this policy will be referred to the Office of Residence Life, the Office of Student Conduct, and/or University Police.

It is against residence hall policy for a student to be in a residential area (room, common area, common building, building entryway, or quad area immediately adjacent to the residence halls) and in the presence of an illegal substance. Students who are in the presence of an illegal substance in these areas will be referred to the Office of Residence Life, the Office of Student Conduct and/or University Police.

Alcohol Poisoning is a Medical Emergency.

Call for help. You could save someone's life.

CALL 911

Know the signs:

- Passed out or difficult to wake
- Cold, clammy, pale, or bluish skin
- Slowed breathing
- Vomiting while asleep or awake

Know how to help:

- Turn a vomiting person on his or her side to prevent choking
- Clear vomit from the mouth
- Keep the person awake
- NEVER leave the person unattended



Pennsylvania Alcohol-Related Offenses

Pennsylvania's Medical Amnesty Law

If an individual who is under 21, in good faith, calls and believes they are the first to call 911, police, ambulance or campus security, gives their name and stays with the person to prevent that person's death or serious injury, the caller is immune from prosecution for consumption or possession of alcohol.

Penn State's Responsible Action Protocol

Penn State has a Responsible Action Protocol whereby students who seek medical assistance for peers suffering from alcohol poisoning or related problems may not be charged through the campus student conduct system for their own alcohol violations. Under the protocol, students who act responsibly by notifying the appropriate authorities (e.g., calling 911, alerting a resident assistant, contacting police) typically will not face University disciplinary action for their own alcohol violations, unless they are responsible for other violations (e.g., vandalism, assault) as well. However, these students will be required to attend BASICS or similar program; the fee will be waived.

Underage Drinking

It is illegal for anyone under 21 years of age to attempt to purchase, consume, possess, or knowingly and intentionally transport any liquor, malt, or brewed beverage. It is also illegal to lie about age to obtain alcohol and to carry a false identification card.

Penalty	1st Offense	2nd Offense	Subsequent Offense
Fine	0–\$500	0–\$1,000	0–\$1,000
Jail	0–90 days	0–90 days	0–90 days
License Suspension	at least 90 days	at least 1 year	at least 2 years

By law, the local police department and University Police are required to notify parents or guardians of all underage-drinking violations.

Penn State University has a zero-tolerance policy associated with students consuming beverage alcohol under the age of 21. Not only is this against the Pennsylvania law, it is also a violation of the Student Code of Conduct.

Carrying False I.D.

It is illegal for anyone under 21 to possess an identification card falsely identifying that person by name, age, date of birth, or photograph as being 21 or older to attempt to obtain liquor, malt, or brewed beverage by using the identification card of another or by using an identification card that has not been lawfully issued to or in the name of the person who possesses the card.

Penalty	1st Offense	2nd Offense	Subsequent Offense
Fine	0–\$300	0–\$500	0–\$500
Jail	0–90 days	0–1 year	0–1 year
License Suspension	at least 90 days	at least 1 year	at least 2 years

Public Drunkenness

It is illegal to appear in any public place manifestly under the influence of alcohol to the degree that you may endanger yourself or other persons or property, or annoy others in your vicinity.

Public drunkenness is a crime when a person appears in any public place manifestly under the influence of alcohol or a controlled substance to the degree that he may endanger himself or other persons or property, or annoy persons in his vicinity.

Public drunkenness also leads to other behaviors and important health concerns. Often, public drunkenness contributes to many criminal mischiefs and disorderly conducts on campus. People must be responsible for their own actions and know their limits and tolerance levels before consuming alcohol.

Penalty	1st Offense	2nd Offense	Subsequent Offense
Fine	0–\$500	0–\$1,000	0–\$1,000
Jail	0–90 days	0–90 days	0–90 days

Driving Under the Influence (DUI) Law

In Pennsylvania, the illegal level for DUI is .08 percent Blood Alcohol Content (BAC) and .02 percent BAC for minors. The law emphasizes treatment and a three-tier penalty system based on BAC and prior offenses: (1) general impairment (.08-.099 percent), (2) high rate of alcohol (.10-.159 percent), and (3) highest rate of alcohol (.16 percent and above).

Also, drivers with any amount of a Schedule I, II, or III controlled substance not medically prescribed (or their metabolites) may not drive, operate, or be in actual physical control of a vehicle.

It is illegal for anyone under 21 years of age to drive a vehicle with a blood alcohol content of .02 percent or higher. A first-time offense individual, under certain circumstances, may qualify for an Accelerated Rehabilitative Disposition (ARD) program.¹

Penalty	1st Offense	2nd Offense	Subsequent Offense
Fine	\$500–\$5,000	\$750–\$5,000	\$1,500–\$10,000
Jail	2 days–6 months	30 days–6 months	90 days–5 years
License Suspension	1 year	1 year	18 months
Other	Alcohol Safety School Court Reporting Network file	1 year Ignition Interlock license Court Reporting Network file Alcohol Highway Safety School	1 year Ignition Interlock license Court Reporting Network file

Selling or Furnishing Alcohol to Minors

Penalty	1st Offense	2nd and Subsequent Offenses
Fine	\$1,000–\$2,500	\$2,500
Jail	0–1 year	0–1 year

Refusing a Chemical Test

Any person who drives a motor vehicle automatically gives consent to one or more chemical test (e.g. breath, blood, or urine). This implied consent means that you don't have the right to an attorney before testing. If a person refuses to submit to a chemical test: (1) the test will not be done; (2) the person's license will be suspended for one year; (3) the person will most likely be charged with DUI.

For more information about all alcohol-related offenses in Pennsylvania, see www.lcb.state.pa.us/PLCB/Education/index.htm. Click on "Alcohol & the Law."

Open Container Law

In Pennsylvania, there is no state law to prohibit open containers of alcohol in public. However, many local governments have enacted such ordinances.

¹ Depending on your Blood Alcohol level, you may be charged under additional subsections of the DUI statute. Note: If a student is from a state other than Pennsylvania and the home state is part of the national compact on DIO enforcement (46 states are), the student must fulfill these penalties in Pennsylvania and his/her license from the home state will be suspended, if applicable.

State College Open Container Ordinance

It is illegal to have an open container of alcohol in any public parking lot or public parking garage; public street, sidewalk, or alley; or public park in State College. Violations result in fines of \$100 to \$600 plus court costs or thirty days in prison if fines and costs are not paid.

State College Public Urination and Defecation Ordinance

It is illegal to urinate in/on a public place; private property where the public is admitted; or private property without consent of the owner. It is illegal to urinate or defecate in any public place other than in an appropriate sanitary facility or fail to clean, remove, or dispose of it properly. Violations are summary offenses with fines of \$300 to \$600 plus court costs.

Related Drug Offenses

Possession of Marijuana

A person is unlawful when unknowingly, knowingly, or intentionally possesses marijuana (Hashish), a Schedule I substance, and is not authorized by law to possess such substance, as outlined under the Controlled Substances, Drugs, Device and Cosmetic Act of 1972.

Persons engaged in such activity will most likely be faced with criminal charges and charged with a violation of the Student Code of Conduct.

The charges for marijuana possession include:

Quantity	Charge	Jail Time	Fine
30 grams or less	Misdemeanor	30 days	0–\$500
Over 30 grams	Misdemeanor	1 year	0–\$5,000

Possession of Other Drugs

In Pennsylvania, the penalties for being convicted of possession of a controlled substance such as heroin, cocaine, methamphetamines, prescriptions, ecstasy, and LSD vary by type of substance and quantity of the substance possessed. Charges also vary by first, second and subsequent offenses. Charges may include jail time, fines, drug counseling, and suspension of driver's license.

Possession of Drug Paraphernalia

A person is unlawful when he possesses, with the intent to use, drug paraphernalia that is used for packaging, manufacturing, injecting, ingesting, inhaling, or otherwise introducing into the human body a controlled substance in violation of the Controlled Substances, Drugs, Device and Cosmetic Act of 1972.

Synthetic Marijuana

Effective March 1, 2011, the U.S. Drug Enforcement Agency classified synthetic marijuana as an illegal substance. It is also known as Spice, K2, Demon, Wicked, Black Magic, Voodoo Spice, and Ninja Aroma Plsu. Individuals found responsible for manufacturing, possessing, importing/exporting, or distributing these substances will face criminal and civil penalties. Penn State students engaging in these activities will also be held responsible under the University's illegal substances policy. It is also against University policy to use synthetic marijuana.

Controlled Substances Act (CSA) — The CSA places all substances that are regulated under existing federal law into one of five schedules. The place is based on the substance’s medical use, potential for abuse, and safety or dependence ability. Below is a description of the five schedules and examples of drugs in each schedule. The list is not comprehensive.

Schedule	Characteristics	Examples
Schedule I	<ul style="list-style-type: none"> high potential for abuse no currently accepted medical use in US lack of accepted safety for use under medical supervision 	<ul style="list-style-type: none"> Heroin Gamma Hydroxybutyric Acid (GHB) LSD Marijuana MDMA (Ecstasy) Mescaline (peyote) Psilocybin/Psilocyn (mushrooms) Tetrahydrocannabinols (THC)
Schedule II	<ul style="list-style-type: none"> high potential for abuse currently accepted for medical use or with severe restrictions in US abuse may lead to severe psychological or physical dependence 	<ul style="list-style-type: none"> Adderall® Amphetamine Cocaine Methadone Methamphetamine Morphine Oxycodone Phencyclidine (PCP) Ritalin®
Schedule III	<ul style="list-style-type: none"> less potential for abuse than drugs in Schedules I and II currently accepted for medical use in US abuse may lead to moderate or low physical dependence or high psychological dependence 	<ul style="list-style-type: none"> Anabolic Steroids Codeine compounds Some barbiturates Ketamine
Schedule IV	<ul style="list-style-type: none"> low potential for abuse compared to drugs in Schedule III currently accepted medical use in US abuse may lead to limited physical dependence or psychological dependence 	<ul style="list-style-type: none"> Ativan® Rohypnol® (not manufactured or legally marketed in the US) Valium® Xanax®
Schedule V	<ul style="list-style-type: none"> low potential for abuse compared to drugs in Schedule IV currently accepted medical use in US abuse may lead to limited physical dependence or psychological dependence 	<ul style="list-style-type: none"> Cough medicines with codeine

Source: U.S. Department of Justice. (2011). *Drugs of Abuse*. Washington, DC: U.S. Government Printing Office. Retrieved from <http://www.justice.gov/>.

Federal Tracking Penalties — Marijuana

Drug	Quantity	1st Offense	2nd Offense*
Marijuana (Schedule I)	1,000 kg or more mixture; or 1,000 or more plants	<ul style="list-style-type: none"> Not less than 10 yrs, not more than life If death or serious injury, not less than 20 yrs, not more than life Fine not more than \$4 million if an individual, \$10 million if other than an individual 	<ul style="list-style-type: none"> Not less than 20 yrs, not more than life If death or serious injury, mandatory life Fine not more than \$8 million if an individual, \$20 million if other than an individual
Marijuana (Schedule I)	100 kg to 999 kg mixture; or 100 to 999 plants	<ul style="list-style-type: none"> Not less than 5 yrs, not more than 40 yrs If death or serious injury, not less than 20 yrs, not more than life Fine not more than \$2 million if an individual, \$5 million if other than an individual 	<ul style="list-style-type: none"> Not less than 10 years, not more than life If death or serious injury, mandatory life Fine not more than \$4 million if an individual, \$10 million if other than an individual
Marijuana (Schedule I)	More than 10 kgs hashish; 50 to 99 kg mixture More than 1 kg of hashish oil; 50 to 99 plants	<ul style="list-style-type: none"> Not more than 20 yrs If death or serious injury, not less than 20 yrs, not more than life Fine \$1 million if an individual, \$5 million if other than an individual 	<ul style="list-style-type: none"> Not more than 30 years If death or serious injury, mandatory life Fine \$2 million if an individual, \$10 million if other than individual
Marijuana (Schedule I)	1 to 49 plants; less than 50 kg	<ul style="list-style-type: none"> Not more than 5 years Fine not more than \$250,000, \$1 million other than individual 	<ul style="list-style-type: none"> Not more than 10 years Fine \$500,000 if an individual, \$2 million if other than individual
Hashish (Schedule I)	10 kg or less		
Hashish Oil (Schedule I)	1 kg or less		

*The minimum sentence for a violation after two or more prior convictions for a felony drug offense have become final is a mandatory term of life imprisonment without release and a fine up to \$8 million if an individual and \$20 million if other than an individual.

Source: U.S. Department of Justice. (2011). *Drugs of Abuse*. Washington, DC: U.S. Government Printing Office. Retrieved from <http://www.justice.gov/>.

Federal Tracking Penalties

Drug Schedule	Quantity	Penalties	Quantity	Penalties
Cocaine (Schedule II)	500–4999 gms mixture	First Offense: Not less than 5 yrs, and not more than 40 yrs. If death or serious injury, not less than 20 or more than life. Fine of not more than \$5 million if an individual, \$25 million if not an individual. Second Offense: Not less than 10 yrs, and not more than life. If death or serious injury, life imprisonment. Fine of not more than \$8 million if an individual, \$50 million if not an individual	5 kgs or more mixture	First Offense: Not less than 10 yrs, and not more than life. If death or serious injury, not less than 20 or more than life. Fine of not more than \$10 million if an individual, \$50 million if not an individual. Second Offense: Not less than 20 yrs, and not more than life. If death or serious injury, life imprisonment. Fine of not more than \$20 million if an individual, \$75 million if not an individual. 2 or More Prior Offenses: Life imprisonment.
Cocaine Base (Schedule II)	28–279 gms mixture		280 gms or more mixture	
Fentanyl (Schedule II)	40–399 gms mixture		400 gms or more mixture	
Fentanyl Analogue (Schedule I)	10–99 gms mixture		100 gms or more mixture	
Heroin (Schedule I)	100–999 gms mixture		1 kg or more mixture	
LSD (Schedule I)	1–9 gms mixture		10 gms or more mixture	
Methamphetamine (Schedule II)	5–49 gms pure or 50–499 gms mixture		50 gms or more pure or 500 gms or more mixture	
PCP (Schedule II)	10–99 gms pure or 100–999 gms mixture		100 gm or more pure or 1 kg or more mixture	
Penalties				
Other Schedule I & II drugs (and any drug product containing Gamma Hydroxybutric Acid)	Any amount	First Offense: Not more than 20 yrs. If death or serious injury, not less than 20 years, or more than life. Fine \$1 million if an individual, \$5 million if not an individual. Second Offense: Not more than 30 yrs. If death or serious injury, life imprisonment. \$2 million if an individual, \$10 million if not an individual.		
Other Schedule III drugs	Any amount	First Offense: Not more than 10 yrs. If death or serious injury, not more than 15 yrs. Fine not more than \$500,000 if an individual, \$2.5 million if not an individual. Second Offense: Not more than 20 yrs. If death or serious injury, not more than 30 yrs. Fine not more than \$1.5 million if an individual, \$5 million if not an individual.		
All other Schedule IV drugs	Any amount	First Offense: Not more than 5 years. Fine not more than \$250,000 if an individual, \$1 million if not an individual. Second Offense: Not more than 10 yrs. Fine not more than \$500,000 if an individual, \$2 million if not an individual.		
Flunitrazepam (Schedule IV)	Less than 1 gm			
All Schedule V drugs	Any amount	First Offense: Not more than 1 yr. Fine not more than \$100,000 if an individual, \$250,000 if not an individual. Second Offense: Not more than 4 yrs. Fine not more than \$200,000 if an individual, \$500,000 if not an individual.		

Source: U.S. Department of Justice. (2011). *Drugs of Abuse*. Washington, DC: U.S. Government Printing Office. Retrieved from <http://www.justice.gov/>.



Drugs Risks and Consequences

SUBSTANCE Other Names	Potential for Dependence		Risks and Effects		
	Physical	Psycho-logical	Short-Term	Long-Term	Overdose
ALCOHOL Beer, Distilled liquor, Ethanol, Wine	High	High	<ul style="list-style-type: none"> Impaired judgment and vision Lowered inhibitions Loss of motor skills and coordination Slurred speech 	<ul style="list-style-type: none"> Cardiovascular disease Hypertension Liver damage Neurologic damage Toxic psychosis 	<ul style="list-style-type: none"> Coma Possible death
CANNABIS Hash oil, Hashish, Grass, Marijuana, Pot, Weed	Low	Moderate	<ul style="list-style-type: none"> Confusion Euphoria Impaired balance and coordination Memory loss Slowed reaction time Slowed thinking 	<ul style="list-style-type: none"> Cardiovascular damage Frequent respiratory infections Impaired learning Impaired memory Increased heart rate Tolerance and addiction 	<ul style="list-style-type: none"> Insomnia Hyperactivity Panic attack Paranoia Possible toxic reaction if combined with other chemicals
DEPRESSANTS Barbiturates, Benzodiazepine, Date rape drug, Liquid ecstasy, Flunitrazepam, GHB, Methaqualone, Special K, Xanax	High	High	<ul style="list-style-type: none"> Confusion Fatigue Feeling of well-being, irritability Lowered blood pressure Lowered inhibitions Poor concentration Reduced anxiety Sedation Slowed pulse and breathing Slurred speech 	<ul style="list-style-type: none"> Anxiety Dizziness Hallucinations Insomnia Loss of peripheral vision Nausea Seizures Weak, rapid pulse Toxic psychosis Tremors 	<ul style="list-style-type: none"> Blackouts Cold, clammy skin Coma Life threatening withdrawal Possible death Respiratory depression and arrest Toxic reaction if combined with alcohol
HALLUCINOGENICS Acid, Angel Dust, Crystal, LSD, MDA, Mescaline, Mushrooms, PCP, Peyote, Phencyclidine, Psilocybin	Low / Unknown	Unknown	<ul style="list-style-type: none"> Altered stated of perception Increase body temperature, heart rate, blood pressure Loss of appetite Nausea Numbness Sleeplessness Tremors Weakness 	<ul style="list-style-type: none"> Hallucinogen Persisting Perception Disorder (flashbacks) Intensify existing psychosis Violent behavior 	<ul style="list-style-type: none"> Intense, prolonged hallucinations Possible sudden death Psychosis
INHALANTS Gases, Solvents	High for chronic, long-term abuse	High for chronic, long-term abuse	<ul style="list-style-type: none"> Impaired judgment Headache Nausea, vomiting Poor coordination Slurred speech 	<ul style="list-style-type: none"> Cardiovascular and nervous system damage, leading to inability to walk, talk, or think Cramps Depression Loss of muscle tone Memory impairment Mild withdrawal Muscle wasting and weakness Weight loss 	<ul style="list-style-type: none"> Coma Possible sudden death Possible toxic reaction Unconsciousness
NARCOTICS Codeine, Demerol HCL, Heroin, Meperidine, Morphine, Opium, Oxycodone, Vicodin	High	High	<ul style="list-style-type: none"> Confusion Constipation Drowsiness Euphoria Nausea Pain relief Sedation Staggering gait 	<ul style="list-style-type: none"> AIDS and Hepatitis infection Malnutrition 	<ul style="list-style-type: none"> Clammy skin Coma Convulsions Death Respiratory arrest Shallow perspirations Tolerance, addiction Toxic reaction if combined with alcohol
STIMULANTS Amphetamine, Cocaine, Ecstasy, MDMA, Methylphenidate, Phenmetrazine, Ritalin	Possible	High	<ul style="list-style-type: none"> Appetite loss Excitement and euphoria Feeling of well being Increased alertness Increased blood pressure, pulse Insomnia 	<ul style="list-style-type: none"> Insomnia Nervous system damage Organ/tissue damage Paranoia Psychosis Weight loss 	<ul style="list-style-type: none"> Agitation Convulsions Hallucinations Heart attack, stroke High blood pressure Loss of consciousness Seizures Temperature increase
TOBACCO Chewing/ Smokeless Tobacco, Cigarettes, Cigars, Nicotine	High	High	<ul style="list-style-type: none"> Bad breath Bad taste in mouth Decreased lung capacity Increased blood pressure Increased heart rate 	<ul style="list-style-type: none"> Adverse pregnancy outcomes Cardiovascular disease Cancer 	<ul style="list-style-type: none"> Possible death

Notes:

- Alcohol and other drug use during pregnancy increases risk of physical harm to fetus.
- Additional risks of harm may occur from toxic impurities present in street drugs.
- Additional risks of harm may occur from the use of prescription drugs in ways other than prescribed.
- Drugs taken by injection can increase the risk of infection (e.g., HIV, hepatitis, etc.) through needle contamination.

For more information, visit:

www.drugabuse.gov
www.samhsa.gov

Drug and Alcohol Abuse Education Programs

Resources for Faculty and Staff

Penn State's Employee Assistance Program (EAP) is available for Penn State employees if they have a problem with substance abuse or if someone they know may have a problem. If you suspect that you or someone close to you may have a problem with alcohol or other drugs . . . stop hurting and start healing.

- Penn State faculty and staff can reach the EAP 24 hours a day, 7 days a week, by calling 866-799-2728.
- Any employee or supervisor with additional questions related to alcohol and other drug problems may contact Employee Relations at 814-865-1412.



Resources for Students

Campus Resources		
BASICS – Brief Alcohol Screening and Intervention for College Students	University Health Services 201 Student Health Center	814-863-0461
Center for Counseling and Psychological Services (CAPS) Services: - Intervention - Referral	501 Student Health Center	814-863-0395
Center for Women Students Services: - Individual and group counseling - Crisis intervention - Sexual assault and relationship violence information - Referrals - Advocacy	204 Boucke Building	814-863-2027
Collegiate Recovery Community Center	105/106 Pasquerilla Spiritual Center	814-863-0140
Disability Services Services: - Academic adjustments - Auxiliary aids	116 Boucke Building	814-863-1807
Marijuana Intervention Program	University Health Services 201 Student Health Center	814-863-0461
Office of Student Conduct	120 Boucke Building	814-863-0342

Community Resources		
Alcoholics Anonymous (AA)		814-237-3757
Centre County CAN HELP Line		800-643-5432 (24-hour Crisis Hotline)
Centre County Drug and Alcohol	3500 E. College Ave. Suite 1200 State College, PA 16801	814-355-6782
Community Help Centre	410 S. Fraser Street, State College, PA 16801	814-237-5855 (24-hour Hotline) 800-494-2500 (24-hour Helpline)
Women's Resource Center	140 W. Nittany Ave. State College, PA 16801	814-234-5222 (Resource Information) 814-234-5050 (24-hour Hotline) 877-234-5050 (Toll-Free)

ANNUAL DISCLOSURE OF CRIME STATISTICS

While the Penn State University campus is a reasonably safe environment, crimes do occur. In addition to the Clery Act crimes statistics, other common crimes that occur on campus are outlined below.

Theft

Theft is a common occurrence on college campuses. Often, this is due to the fact that theft is often seen as a crime of opportunity. Confined living arrangements, recreation facilities, and many open classrooms and laboratories provide thieves with effortless opportunities. Occupants of the residence halls often feel a sense of security and home atmosphere and become too trusting of their peers, while others leave classrooms and laboratories unlocked when not occupied for short periods of time.

It is important to be very vigilant when it comes to suspicious persons. Never leave items and valuables lying around unsecured. Doors should be locked at all times. The following is a list of suggestions to help you not fall victim to theft.

- Keep doors to residence halls, labs, classrooms locked when not occupied.
- Don't provide unauthorized access to persons in the buildings or classrooms.
- Do not keep large amounts of money with you.
- Lock all valuables, money, jewelry, and checkbooks in a lock box or locked drawer.
- Keep a list of all valuable possessions including the make, models, and serial numbers.
- Take advantage of the Engraving Programs to have all valuables engraved with specific identifying marks.
- Don't leave laptop computers or textbooks unattended in labs or libraries, even if it is for a short period of time.
- Don't lend credit cards or identification cards to anyone.
- Report loitering persons or suspicious persons to police immediately; don't take any chances.



Identity Theft

Identity theft is a crime in which someone wrongfully obtains and uses another person's personal information in some ways that involves fraud or deception, typically for economic gain. This personal data could be a Social Security number, bank account, or credit card information.

Persons involved in identity theft often use computers or other forms of media to assist them.

You can take measures to prevent this from happening to you:

- Do not give anyone your personal information unless there is a legitimate reason to trust them.
- Never give your credit card information, date of birth, or other information over the telephone, unless you can confirm the person receiving that information.
- Complete a credit check frequently to assure there is no suspicious activity.
- Examine financial information often to assure all transactions are authorized and accounted for.
- Use security software and install firewalls on computers.

Clery Act Crimes

Jeanne Clery Disclosure of Campus Security Policy and Campus Crime Statistics Act (20 USC § 1092(f)) requires colleges and universities across the United States to disclose information about crime on and around their campuses. The University Police collects the Clery crime statistics disclosed in the following charts through a number of methods.

The University Police maintains a close relationship with all police departments where Penn State owns or controls property to ensure that crimes reported directly to these police departments that involve the University are brought to the attention of the University Police. In addition to collecting Clery crime statistics from local police departments, all reports of crime incidents made directly to the University Police (through police dispatchers and officers) are entered into an integrated computer aided-dispatch systems/records management system. The entries are recorded in the system in accordance with the crime definitions outlined in the FBI Uniform Crime Reporting Handbook and the FBI National Incident-Based Reporting System Handbook (sex offenses only). To ensure each report is appropriately classified in the correct crime category, after a dispatcher or officer enters the report in the system, a department administrator reviews the report to ensure it is appropriately classified. The department also periodically examines data in the system for appropriate classification.

In addition to the crime data that the University Police maintains, the University collects Clery crime statistics of reports made to various campus security authorities, as defined in this report. The statistics reported in the following charts generally reflect the number of criminal incidents reported to the various campus security authorities. The statistics reported for the subcategories on liquor laws, drug laws, and weapons offenses represent the number of people arrested or referred to campus judicial authorities for respective violations, not the number of offenses documented.

Definitions of Reportable Crimes

Murder/Manslaughter – defined as the willful killing of one human being by another.

Negligent Manslaughter – defined as the killing of another person through gross negligence.

Forcible sex offenses – defined as any sexual act directed against another person, forcibly and/or against that person's will; or not forcibly or against the person's will where the victim is incapable of giving consent. Including: forcible rape, forcible sodomy, sexual assault with an object, forcible fondling.

Non-forcible sex offense – unlawful, non-forcible sexual intercourse, including incest and statutory rape.

Robbery – defined as taking or attempting to take anything of value from the car, custody, or control of a person or persons by force or threat of force or violence and/or by putting the victim in fear.

Aggravated Assault – defined as an unlawful attack by one person upon another for the purpose of inflicting severe or aggravated bodily injury. This type of assault usually is accompanied by the use of a weapon or by means likely to produce death or great bodily harm.

Burglary – unlawful entry of a structure to commit a felony or a theft.

Motor Vehicle Theft – theft or attempted theft of a motor vehicle.

Arson – any willful or malicious burning or attempt to burn, with or without intent to defraud, a dwelling house, public building, motor vehicle or aircraft, personal property of another, etc.

Domestic Violence – Includes felony or misdemeanor crimes of violence committed by a current or former spouse of the victim, by a person with whom the victim shares a child in common, by a person cohabitating with or has cohabitated with the victim as a spouse, by a person similarly situated to a spouse of the victim under the domestic or family laws of the Commonwealth of Pennsylvania, or by any other person against an adult or youth victim who is protected from that person's acts under the domestic or family violence laws of the jurisdiction. Domestic Violence is not defined by Pennsylvania state statute.

Dating Violence – Means violence committed by a person—(a) who is or has been in a social relationship of a romantic or intimate nature with the victim; and (b) where the existence of such a relationship will be determined by the reporting party's statement and based on a consideration of the following factors:

- (i) The length of the relationship.
- (ii) The type of relationship.
- (iii) The frequency of interaction between the persons involved in the relationship.

Dating Violence is not defined by Pennsylvania state statute.

Stalking – Means engaging in a course of conduct directed at a specific person that would cause a reasonable person to—(a) fear for his or her safety or the safety of others; or (b) suffer substantial emotional distress. In Pennsylvania, a person commits the crime of stalking when the person either:

- (1) engages in a course of conduct or repeatedly commits acts toward another person, including following the person without proper authority, under circumstances which demonstrate either an intent to place such other person in reasonable fear of bodily injury or to cause substantial emotional distress to such other person; or

- (2) engages in a course of conduct or repeatedly communicates to another person under circumstances which demonstrate or communicate either an intent to place such other person in reasonable fear of bodily injury or to cause substantial emotional distress to such other person.

Hate Crimes – includes all of the crimes listed above that manifest evidence that the victim was intentionally selected because the perpetrator's bias against the victim based on one of the Categories of Prejudice listed below, plus the following crimes.

Larceny/Theft – includes pocket picking, purse snatching, shoplifting, theft from building, theft from motor vehicle, theft of motor vehicle parts or accessories, and all other larceny.

Simple Assault – unlawful physical attack by one person upon another where neither the offender displays a weapon, nor the victim suffers obvious severe or aggravated bodily injury involving apparent broken bones, loss of teeth, possible internal injury, severe laceration or loss of consciousness.

Intimidation – to unlawfully place another person in reasonable fear of bodily harm through the use of threatening words and/or other conduct but without displaying a weapon or subjecting the victim to actual physical attack.

Destruction/Damage/Vandalism to Property (except Arson) – to willfully or maliciously destroy, damage, deface, or otherwise injure real or personal property without the consent of the owner or the person having custody or control of it.

Categories of Prejudice

Race – A preformed negative attitude toward a group of persons who possess common physical characteristics genetically transmitted by descent and heredity that distinguish them as a distinct division of humankind.

Gender – A preformed negative opinion or attitude toward a group of persons because those persons are male or female.

Religion – A preformed negative opinion or attitude toward a group of persons who share the same religious beliefs regarding the origin and purpose of the universe and the existence or nonexistence of a supreme being.

Sexual Orientation – A preformed negative opinion or attitude toward a group of persons based on their sexual attraction toward, and responsiveness to, members of their own sex or members of the opposite sex.

Ethnicity/national origin – A preformed negative opinion or attitude toward a group of persons of the same race or national origin who share common or similar traits, languages, customs, and traditions.

Disability – A preformed negative opinion or attitude toward a group of persons based on their physical or mental impairments/challenges, whether such disability is temporary or permanent, congenital or acquired by heredity, accident, injury, advanced age, or illness.

Gender Identity – A preformed negative opinion or attitude toward a group of persons because the perceived gender of those persons may be different from the gender traditionally associated with their gender at birth.

CRIME STATISTICS: CLERY DATA

The following annual security report provides crime statistics for selected crimes that have been reported to local police agencies or to campus security authorities. The statistics reported here generally reflect the number of criminal incidents reported to the various authorities. The statistics reported for the sub-categories on liquor laws, drug laws, and weapons offenses represented the number of people arrested or referred to campus judicial authorities for respective violations, not the number of offenses documented. This report complies with 20 U.S. Code Section 1092 (f).

OFFENSES	2011				2012				2013			
	On-Campus Property		Public Property	Non-Campus	On-Campus Property		Public Property	Non-Campus	On-Campus Property		Public Property	Non-Campus
	Residence Hall	Total On-Campus			Residence Hall	Total On-Campus			Residence Hall	Total On-Campus		
Murder/Non-negligent Manslaughter	0	0	0	0	0	0	0	0	0	0	0	0
Negligent Manslaughter	0	0	0	0	0	0	0	0	0	0	0	0
Sex Offenses - Forcible*	10	24	0	6	16	56	1	6	8	17	1	10
Sex Offenses - Non-forcible	0	0	0	0	0	0	0	0	0	0	0	0
Robbery	1	2	1	0	0	2	0	0	0	0	0	0
Aggravated Assault	6	6	3	0	5	12	1	2	7	19	2	0
Burglary	87	112	0	18	38	48	0	9	31	40	0	13
Motor Vehicle Theft	0	1	0	0	0	1	0	0	0	3	2	1
Arson	4	11	0	1	2	3	0	0	7	9	0	2
VAWA OFFENSES												
Domestic Violence	–	–	–	–	–	–	–	–	2	2	0	0
Dating Violence	–	–	–	–	–	–	–	–	3	3	0	0
Stalking	–	–	–	–	–	–	–	–	1	1	0	0
ARRESTS												
Weapons	2	4	0	0	0	0	0	0	1	2	1	0
Drugs	246	339	13	17	159	215	19	5	147	222	15	5
Alcohol	213	805	102	61	181	683	111	40	196	646	77	27
REFERRALS												
Weapons	1	2	0	0	0	0	0	0	0	0	0	0
Drugs	217	292	0	0	137	210	1	0	243	347	0	2
Alcohol	439	450	0	0	450	468	0	0	852	871	2	2
HATE CRIMES												
Murder/Non-negligent Manslaughter	0	0	0	0	0	0	0	0	0	0	0	0
Negligent Manslaughter	0	0	0	0	0	0	0	0	0	0	0	0
Sex Offenses - Forcible	0	1(Re)	0	0	0	0	0	0	0	0	0	0
Sex Offenses - Non-forcible	0	0	0	0	0	0	0	0	0	0	0	0
Robbery	0	0	0	0	0	0	0	0	0	0	0	0
Aggravated Assault	0	0	0	0	0	0	0	0	0	0	0	0
Burglary	0	0	0	0	0	0	0	0	0	0	0	0
Motor Vehicle Theft	0	0	0	0	0	0	0	0	0	0	0	0
Arson	0	0	0	0	0	0	0	0	0	0	0	0
Larceny	0	0	0	0	0	0	0	0	0	0	0	0
Simple Assault	0	2(Re,Ra)	0	0	0	1(Ra)	0	0	0	1(Ra)	0	0
Intimidation	1(Re)	3(2Re,1Ra)	0	0	0	0	0	0	1(Re)	1(Re)	0	1(Re)
Vandalism	3(Ra,Re,S)	3(Ra,Re,S)	0	0	0	3(2Ra,1Re)	0	0	5(2Ra,1Ra/Re,2S)	6(3Ra,1Ra/Re,2S)	0	1(Re)

Hate Crime Key: (D) Disability (E) Ethnicity (Ra) Race (Re) Religion (S) Sexual Orientation (G) Gender (N) National Origin (GI) Gender Identity

Pennsylvania Uniform Crime Report Act

Crime statistics are reported to the Pennsylvania State Police for annual publication in "Crime in Pennsylvania, the Uniform Crime Report of the Commonwealth." These statistics are also available in the U.S. Department of Justice Publication, Crime in the United States, which is available at all public libraries and most law enforcement agencies within the United States. Crime statistics are also available by writing to University Police, The Pennsylvania State University, 30 Eisenhower Parking Deck, University Park, PA 16802-2116 or can be accessed on the Internet at <http://www.police.psu.edu>.

CAMPUS: University Park	2011			2012			2013		
	ON CAMPUS			ON CAMPUS			ON CAMPUS		
	ACTUAL OFFENSES	*CRIME RATE	ARREST DATA	ACTUAL OFFENSES	*CRIME RATE	ARREST DATA	ACTUAL OFFENSES	*CRIME RATE	ARREST DATA
PART I OFFENSES									
CRIMINAL HOMICIDE									
Murder & Non-negligent Manslaughter									
Manslaughter by Negligence									
FORCIBLE RAPE									
Rape by Force	2	4	1 (1)	5	9	0	9	15	0
Assault to Rape - Attempts									
ROBBERY									
Firearm	1	2	0						
Knife or Cutting Instrument				1	2	0			
Other Dangerous Weapon									
Strong Arm (Hands, Feet, etc.)	1	2	0	1	2	0			
ASSAULT									
Firearm	2	4	0						
Knife or Cutting Instrument				2	3	0	5	8	0
Other Dangerous Weapon	1	2	1				2	3	0
Hands, Fists, Feet, etc.	4	7	4	11	19	6	13	22	4
BURGLARY									
Forcible Entry	8	14	0	2	3	2	6	10	1
Unlawful Entry - No Force	109	195	38	46	79	1	33	56	4
Attempted Forcible Entry	1	2	0				1	2	0
LARCENY - THEFT (Exc. Motor Vehicles)	493	880	53	411	709	32	453	769	25
MOTOR VEHICLE THEFT									
Autos	4	7		3	5	0	2	3	0
Trucks and Buses									
Other Vehicles				1	2	0	2	3	0
ARSON	11	20		3	5	0	9	15	0
TOTAL PART I OFFENSES	637	1139	97	486	838	41	535	909	34
PART II OFFENSES									
Assaults - Non-Aggravated	55	98	19 (2)	42	72	20	62	105	27
Forgery and Counterfeiting	27	48	12	28	48	12	15	25	8
Fraud	56	100	22	48	83	23	31	53	8
Embezzlement									
Stolen Prop., Rec., Possess., etc.	5	9	4	5	9	3	6	10	3
Vandalism	281	502	36 (3)	219	378	21	195	331	24
Weapons, Carrying, Possess., etc.	3	5	3				1	2	0
Prostitution & Commercialized Vice									
Sex Offenses (Exc. Prostitution & Rape)	18	32	4	23	40	8	6	10	2
Drug Abuse Violations									
S Opium-Cocaine									
A Marijuana	4	7	4	5	9	4	5	8	10
L Synthetic									
E Other	2	4	3	2	3	0	1	2	0
P Opium-Cocaine	1	2	2	2	3	0			
O Marijuana	384	686	246	509	878	175	464	788	173
S Synthetic	1	2	1	1	2	2			
S Other	6	11	8	4	7	4	9	15	6
Gambling									
Book Making									
Numbers, etc.									
Offenses Against Family & Children				5	9	2	0	0	1
Driving Under the Influence	52	93	52	55	95	51	43	73	43
Liquor Laws	666	1189	814	668	1152	731	574	975	652
Drunkenness	152	271	132	169	291	153	156	265	135
Disorderly Conduct	288	514	80	313	540	64	283	481	58
Vagrancy									
All Other Offenses (Exc. Traffic)	94	168	80	84	145	60	69	117	52
TOTAL PART II OFFENSES	2095	3741	1522	2182	3764	1333	1920	3261	1202
TOTAL PART I & PART II OFFENSES	2732	4880	1619 (6)	2668	4602	1374	2455	4169	1236

University Park	
2013: Employees	13,949
Students	44,936

*RATE: Per 100,000 population. Population is calculated using full-time equivalent students, faculty, and staff.
 **Reasonably contiguous buildings/property owned by Penn State or student organizations recognized by Penn State.
 (") " indicates the number of incidents, if any, that are classified as hate crimes by the Hate Crimes Statistics Act (28 U.S.C. 534).
 Footnote: These statistics comply with the Pennsylvania Campus Security Act (PA Title 24 Section 2502-1 to -5) enacted May 1988.
 (a) Aggravated Assault

Housing Report

(1) Types of student housing available

University Park offers the following types of housing for Penn State students on campus (the University does not operate any student housing off campus):

- Traditional residence halls
regular double rooms, single rooms, and supplemental housing
- Suite-style halls
2-4 students in a single or double
- Single halls
single room with private bathroom
- Undergraduate Apartments
either single or double room apartments for 4 students, with living room, bathroom, and kitchen
- Graduate Apartments
4-single bedroom apartment, with living room, 2 bathrooms, and kitchen
- Family Apartments
1-bedroom, 2-bedroom, and 3-bedroom apartment units for students with families

(2) Policies on housing assignment and requests by students for assignment changes

Once a student accepts a Housing Contract, they can indicate housing preferences, such as area, Special Living Option, roommate, using the eLiving system (online Housing Contract portal). Students are able to modify the contract preferences until the identified deadline, after which the Assignment Office will begin processing room assignments. A student interested in changing the preferences after the deadline may send the request, but it is not guaranteed. Once room assignments are posted, an online room exchange eBoard is available for students to “swap” rooms. There are restrictions for room changes, such as first-year students cannot go to an upper-class space, male/female changes, singles, students with medical needs, etc. The eBoard is suspended during arrival, and then is made available again after the semester begins. Once the semester has begun and things settle down, if there are any vacant rooms, an open room page will be made available to students to switch to those spaces. The eBoard and open room page is also scheduled for future semesters; so in the fall semester, students can view what is available for spring semester.

Emergency Situations

When a student is unable resolve a situation by a normal room switch (because there is not any available space for students to move to due to over-capacity), Residence Life staff can contact the Assignment Office to review options available to relocate students. This is on a case-by-case basis.

For true emergency situations where a student needs to be moved immediately, a few spaces on campus are designated as “emergency rooms.” Residence Life has the ability to move students immediately to one of these rooms if a situation requires immediate relocation of a student, and can pick up the necessary key from the Commons Desk.



(3) Policies concerning the identification and admission of visitors in student housing facilities

The policy for guests is found in the Housing Contract *Terms, Conditions, and Regulations*, which the student agrees to when accepting the Housing Contract. The policy states:

GUESTS

The residence halls are intended for use by residents of the building and their invited guests. A guest is defined as a person visiting a resident of the residence hall at the resident’s invitation. Delivery persons are not considered to be guests for purposes of this policy.

To ease the congestion of the move-in period and to allow roommates the opportunity to discuss what to do about overnight guests in the room, no overnight guests will be allowed in the residence halls until the first day of classes, then only with the permission of the roommate.

The following stipulations relate to all guests:

1. It is the responsibility of the host student to ensure that their guests are aware of University and residence hall policies. Guests are held responsible for their own actions and for knowledge of University and residence hall regulations. However, hosts may be held accountable for damages committed by their guests, unless the guest can be identified as a University student. Hosts may also be held accountable for their guests’ behavior.
2. Residents are permitted to have guests in their rooms only if there is no objection from their roommate(s).
3. Neither room keys nor door access cards will be provided for guests. Residents are not to give their keys or Penn State id+ Card to a guest in order for them to gain entrance to the room or the building.
4. Students may have an overnight guest in their room for a maximum of three consecutive nights. The University reserves the right to revoke this privilege. Guests may not move from one host’s room to another in order to extend their stay in the residence halls.

5. Only residents and their invited guests are permitted in the living areas of the building, i.e., locations other than the lobby, which includes individual rooms and floor lounges. Individuals found in the building who are not residents or guests of residents are considered trespassing.
6. Guests are to use the appropriate gender restroom/shower facilities.
7. All guests must be escorted by a resident of the building at all times. A staff member may confront the individual if he/she is not recognized as a resident of that building and/or resident of the building is not escorting the individual.

Students charged with violations of the guest regulation will be subject to University disciplinary action. An unescorted guest who is a student of the University shall be subject to University discipline. If a cot and/or linens are needed, students should make arrangements at the area commons desk/housing office. Charges for these services should be paid in advance; the deadline for reservations is 3:00 p.m., Monday through Friday.

(4) Measures to secure entrances to student housing facilities

All entrances, referred to as Card Reader (CR) doors, to the residence halls are locked 24hrs/day and are currently monitored by the Blackboard security system. Only residents of the building are granted access to the building, and must swipe their Penn State id+ Card at the card reader. If a student does not have their id+ Card in their possession, they may purchase a temporary id card at the Commons Desk (privileges are transferred to the temp card, and the id+ Card is suspended), or they may use the courtesy phone located outside all entrances to call their roommate to let them in.

All doors are equipped with an audible alarm, and will sound after the set time has passed. The alarm will disengage once the door is closed. Alarm Point (AP) doors are exit-only doors that will also sound, and cannot be propped open.

Exceptions to this policy include the following:

- Student arrival/departure at the beginning/end of a semester to aid in the move in/out process, and include designated doors.
- Doors may temporarily be unlocked by Housing staff for short periods of time to accommodate a project where (1) work is being performed on the door; (2) staff are moving items, such as furniture, mattresses, project materials, etc. in/out of building. In those instances, staff are present at the door during the time period the door is unlocked. Prior to/immediately after a door is unlocked/locked, an email is sent by the staff person responsible for unlocking/locking the door to an email distribution list "ABS Security" so that all staff are aware of the situation.

System Monitoring

The Office of Access Control in Housing monitors the system during business hours, and will dispatch the door technician as necessary to address any issues. Housing offices in the areas can also report to Access Control any issues that are discovered.

The Residence Hall Security Unit (RHSU) begins their shift around the time that the Access Control office has closed. Any door issues are received by Dispatch, who will radio a RHSU employee to access the door issue. OPP can be called in to address any door issues that

cannot wait until the next business day to be fixed by the Housing door technician, especially if there is only one entrance into a building.

At the end of a shift, an RHSU employee will send an email to the Security Listserv to disclose any issues that occurred the previous night, including any maintenance issues or damages found. The Security Listserv is sent to Housing area employees, HFS IT, Access Control, and designated Police Service employees.

(5) Standard security features used to secure doors and windows in students' rooms

Doors

Student bedrooms doors feature a locking mechanism and have a Stanley lock. Each student is issued a key with a unique code and a "Do Not Duplicate" stamp. If the student reports a key is lost or stolen, the core is changed immediately, and all occupants receive a new replacement key.

Windows

All bedroom windows are lockable. At the beginning of each close-down period and over the summer, Housing staff double-check that windows are locked. The actual locking mechanism varies by building due to different window types, but essentially functions in the same manner. All student rooms that are located on the ground/near ground floor have security screens installed, which are checked by Housing on an annual basis.

(6) Type and number of, and description of security training provided to employees, including security personnel, assigned to the student housing facilities

Security Personnel

Police Services hires about 30-40 student employees as part of the Auxiliary Police unit. These employees provide security primarily in the exterior of the residence hall buildings on campus on a daily basis between 5:00 p.m. – 7:00 a.m. while students are in residence. Student employees are part-time, so shifts are rotated. Employees participate in general training (office procedures, radios, software, logistics, etc.), and then receive on-the-job training with a peer to learn about job responsibilities, checking doors, reporting issues, etc.



Residence Life

Residence Life professional staff with building access:

- Director – 1
- Associate Director – 2
- Assistant Director – 6
- Area Coordinator – 4
- Paraprofessional Staff – 272 Resident Assistants
- Residence Hall Coordinators – 26

Training for Residence Life staff:

Our professional staff get a variety of security training including on-duty protocol training (annually), Clery training (annually), Mandatory reporter training for child abuse (annually), risk management training (annually), Community standards/disciplinary protocol training (annually), fire safety training (annually), active shooter training (annually), and crisis response/emergency training (ongoing). They also receive written manuals for their positions, emergency response, community standards protocols, and risk management guidelines.

Para-professional staff receive training at least twice a year on duty protocols, crisis response, and safety/security protocols. They receive Clery reporter training at least once a year, and emergency response training at least twice a year. They receive an RA protocol manual; participate in a semester long pre-service class that also includes information on protocols, fire safety training (annually), and active shooter training.

Other Access Groups	
Group Type	Number of Access Accounts*
Admissions Tours	12 passports
Aides	11 proximity cards/7 passports
Student Clubs	2 students/2 advisors
Conferences	(0) – set up during conference season for specific event
Contractors	19 passports
Deliveries	campus mail 9/bakery 2/ general stores 3/catering 4
Desk Operations	full-time 1/student employees 20*access is to Simmons only, as this is the only residence hall that has a Commons Desk located inside a secured building.
HFS Employee	384 employees
ITS	227 employees
Newspaper	Collegian 4 passports/ newspaper readership 5 passport
OPP	258 employees
Residence Life	120 employees
Schreyer Honors College	37 non-resident students/ 25 staff/1 intern
Sorority	53 members/3 advisors
Student Organization	THON 5/NRHH 5
TNS	42 employees
University Police	Residence Hall Security Unit (RHSU) 57/ Police Officers 46
Vendor	Pepsi 20 passports; Bittner (vending) 5 passports; Caldwell Gregory (laundry machines) 1

*Access is either provided on a Penn State employee's Penn State id+ Card, or on a specific, numbered Passport card, which are tracked and inventoried.

Penn State employees and outside vendors/contractors requesting access to residence hall facilities must complete the "HFS Access Agreement Form," which requires the employee to agree to conditions of use, reporting of lost/stolen card or key, and acknowledgment of University policies related to Access Control. This form is used for both key and card access.

The agreement form is submitted to Housing Access Control office, which oversees access setup and maintenance. Various access levels have been created, which offer access to specific buildings and time frames, depending upon the type of employee. The database is reviewed on a monthly basis. The Access Control office follows strict guidelines for determining who has access, and to what and when. For individuals who have a need to access student room keys, a separate authorization list is provided to each commons desk. Only those individuals may request a room key, and must sign the key in/out.

(7) Type and frequency of programs designed to inform student housing residents about housing security and enforcement policies

Residence Life conducts house meetings with students (two during fall semester opening, one during spring semester, and ongoing as needed). Stall Stories, a one-page newsletter that is posted in restroom stalls, throughout the semester intermittently includes articles on student safety. Information is also posted on bulletin boards on the residence hall floors at least twice a semester, and information is provided in the *Terms, Conditions, and Regulations* of the Housing Contract. Each Resident Assistant (RA) must perform a minimum of one safety program per semester, and can include topics of piggybacking, escort policy, fire safety, other personal safety, locking doors, etc.

During student orientation, information about safety policies is reviewed (keeping room doors locked, discourage piggybacking, reporting lost cards/keys). Posters are available to be displayed on floor bulletin boards when the bulletin board is not scheduled for other display topics.

A safety and security page is provided on the Housing website at www.housing.psu.edu/housing/housing/safety.cfm, which includes links to University resources.





(8) Policy and any special security procedures for housing students during low-occupancy periods such as holidays and vacation periods

The University has 3 official closedown periods during the academic year: fall break, winter break (between end of fall semester/beginning of spring semester), and spring break. During closedown periods, all residents are required to vacate the residence halls (with the exception of apartments – these residents may stay on campus during the closedown period). Residents are provided instructions on what to do before leaving for the break (leaving microfridge on, closing/locking windows and curtains, securing belongings, locking room).

For students that are unable to leave campus during a closedown period, two options are available:

- During the contract renewal process, the student can indicate that they are interested in *Break Access Housing*. By selecting Break Access Housing, the student agrees to pay an additional room fee for the extra nights and be assigned to a designated building. These designated buildings are staffed by Residence Life and security rounds are made by the Residence Hall Security Unit.
- If a student does not have a Break Access Housing Contract, and requires staying on campus for a specific break period, the student can sign up for temporary Break Access housing. Housing offers limited break access housing in supplemental housing lounges, and offers to students on a first-come, first-served basis. The student would pay for the room cost for the entire break period when accepting this contract. The supplemental housing lounges are located in the same buildings as the Break Access housing, so that staffing patterns are not altered.

(9) Policy on housing of guests and others not assigned to the student housing or not regularly associated with the institution of higher education

The policy for overnight guests of student residents is addressed in section (3) “Policies concerning the identification and admission of visitors in student housing facilities.”

While guest apartments are available on campus, the apartments were not used in that function this past year.

(10) Number of undergraduate and graduate students living in student housing

Housing capacity = the total available space on campus

Housing occupancy = the actual number of students living on campus

Occupancy can fluctuate throughout the semester. Housing has the ability to increase the capacity on campus, in order to accommodate the maximum number of students. In the fall semester, occupancy averages around 105%. Occupancy typically decreases in the spring semester as students graduate/study abroad/internship etc., with an average of 100.3%.

Housing Area	Capacity (regular & supplemental)	Student Type
East	4154	Undergraduates
Eastview	808	Undergraduates
Nittany	768	Undergraduates
North	935	Undergraduates
Pollock	2708	Undergraduates
South	3175 [^]	Undergraduates
West	1663	Undergraduates
White Course Apartments		
• Single	300	Graduates & Undergraduates*
• Family	124	Graduates & Undergraduates

[^]Capacity shown is assuming all renovated and new buildings are online. South Halls project includes the construction of a new residence hall building (opening fall 2013), and renovation of the 8 residence halls (between May 2012 – December 2014)

*Undergraduates are typically not assigned to White Course single apartments, unless we have a high occupancy in the residence halls and need to relocate students so that everyone can fit.

Annual Fire Safety Report

The Higher Education Opportunity Act enacted on August 14, 2008, requires institutions that maintain on-campus student housing facilities to publish an annual fire safety report that contains information about campus fire safety practices and standards of the institution. The following report details all information required by this act for the University Park campus of The Pennsylvania State University.

Definitions

The following terms are used within this report. Definitions have been obtained from the Higher Education Opportunity Act.

On-Campus Student Housing – A student housing facility that is owned or controlled by the institution, or is located on property that is owned or controlled by the institution, and is within a reasonable contiguous area that makes up the campus.

Fire – Any instance of open flame or other burning in a place not intended to contain the burning or in an uncontrolled manner.

Fire Safety

Penn State takes fire safety very seriously and continues to enhance its programs to the University community through education, engineering, and enforcement. Educational programs are presented throughout the year to faculty, staff, and students so they are aware of the rules and safe practices. These programs, which are available at all campuses, include identification and prevention of fire hazards, actual building evacuation procedures and drills, specific occupant response to fire emergencies, and hands-on use of fire extinguishers.

All University residence halls have emergency evacuation plans and conduct fire drills during the school year to allow occupants to become familiar with and practice their evacuation skills.

Penn State has been a leader in ensuring the safety of students, faculty, staff, and visitors who live and work in University-operated residences. Automatic sprinkler systems and fire alarm systems are recognized engineered building features that help to provide for a fire-safe living environment. All University-operated residence halls and apartments are provided with automatic sprinkler systems, smoke detectors, and building fire alarm systems to provide early detection and warning of a possible fire emergency. Additionally, Housing and Food Services staff at University Park are trained on hands-on use of fire extinguishers and emergency procedures in the event of a fire.

The University maintains and tests all fire alarms and automatic fire suppression systems in accordance with the appropriate National Fire Protection Association Standard to ensure system readiness and proper operation in the event of a fire emergency.

The University has adopted and developed numerous Safety Policies and Guidelines to help promote a safe living and work environment at all University locations. These policies, guidelines, and other fire safety information can be accessed at <http://www.ehs.psu.edu>.

Additional protection is provided by University Park Police officers, who are trained for initial response to fire incidents occurring at University Park facilities. Officers provide assistance in building evacuation and extinguishment/confinement of small fires.

2011/2012/2013 Fire Statistics for On-Campus Student Housing Facilities

Date	Location	Address	Cause	Damage Amount	Injuries	Deaths
4/22/11	Sproul Hall	Bigler Rd.	Intentional – Charred bulletin board material	\$0-99	0	0
7/22/11	Packer Hall	Bigler Rd.	Unintentional – Electrical, desk fan	\$0-99	0	0
9/5/11	Shulze Hall	Pollock Rd.	Unintentional – Electrical, ceiling light	\$0-99	0	0
9/16/11	Tener Hall	Bigler Rd.	Intentional – Burned hockey glove	\$0-99	0	0
9/29/11	Packer Hall	Bigler Rd.	Intentional – Burned elevator control button	\$100-999	0	0
10/10/11	Hamilton Hall	Burrows Rd.	Unintentional – Cooking	\$0-99	0	0
11/5/11	Bigler Hall	Bigler Rd.	Unintentional – Electrical, light ballast	\$0-99	0	0
12/6/11	Nittany Apts. #56	McKean Rd.	Unintentional – Stove Top, bamboo pot	\$0-99	0	0
12/10/11	Pinchot Hall	Bigler Rd.	Intentional – Charred post-it note	\$0-99	0	0
1/28/12	Mifflin Hall – 3rd floor	Mifflin Rd.	Unintentional – Burnt food	\$0-99	0	0
2/8/12	Brill Hall – 1st floor	McKean Rd.	Unintentional – Electrical cord failure	\$0-99	0	0
3/26/12	Mifflin Hall – Lobby	Mifflin Rd.	Intentional – Small piece of paper on door ignited	\$0-99	0	0
4/1/12	Irvin Hall – Basement level	Curtin Rd.	Unintentional – Grease on stove top	\$0-99	0	0
6/3/12	McElwain Hall – 3rd floor	Shortlidge Rd.	Unintentional – Failed light fixture	\$0-99	0	0
12/2/12	Porter Hall – 6th floor	McKean Rd.	Intentional – Scorched door tags (2)	\$0-99	0	0
12/14/12	Holderman Hall – 1st floor	White Course Dr.	Unintentional – Cooking oil ignited in pan	\$1,062	0	0
1/17/13	Shunk Hall – 1st floor	McKean Rd.	Intentional – Scorched paper sign and tape	\$0-99	0	0
1/23/13	Shunk Hall – 5th floor	McKean Rd.	Intentional – Scorched paper wall posting	\$0-99	0	0
2/8/13	Porter Hall	McKean Rd.	Intentional – Burn marks to paint on wall/ceiling of non-combustible stairway	\$0-99	0	0

Date	Location	Address	Cause	Damage Amount	Injuries	Deaths
3/12/13	Ray Hall	Duff Dr.	Unintentional – Flame within oven during oven cleaning process	\$0-99	0	0
10/20/13	Hartranft Hall – 3rd floor	Mifflin Rd.	Intentional – Scorched paper sign affixed to wall	\$0-99	0	0
10/29/13	Beaver Hall – 8th floor	McKean Rd.	Intentional – Scorched piece of paper	\$0-99	0	0

Date	Location	Address	Cause	Damage Amount	Injuries	Deaths
12/7/13	Stuart Hall – 1st floor	Park Ave.	Intentional – Scorched paper wall posting	\$0-99	0	0
12/19/13	Panofsky Hall – 3rd floor	Bigler Rd.	Intentional – Burn marks observed on piece of wood furniture	\$114.00	0	0

Description of On-Campus Student Housing Fire Safety Systems—Residence Halls/Apartments

Building	Area	Total Fires			Sprinkler Protection Full Coverage = All common areas & individual rooms	Fire Alarm System SD (smoke detector) MP (manual pull station)	Monitored Fire Alarm System	Fire Rated Corridors	# Fire Drills
		2011	2012	2013					
Hamilton Hall	West Halls	1	0	0	Full coverage	SD/MP	Yes	Yes	8
Irvin Hall	West Halls	0	1	0	Full coverage	SD/MP	Yes	Yes	8
Jordan Hall	West Halls	0	0	0	Full coverage	SD/MP	Yes	Yes	8
McKee Hall	West Halls	0	0	0	Full coverage	SD/MP	Yes	Yes	8
Thompson Hall	West Halls	0	0	0	Full coverage	SD/MP	Yes	Yes	8
Watts Hall	West Halls	0	0	0	Full coverage	SD/MP	Yes	Yes	8
Beaver Hall	Pollock Halls	0	0	1	Full coverage	SD/MP	Yes	Yes	9
Hartranft Hall	Pollock Halls	0	0	1	Full coverage	SD/MP	Yes	Yes	9
Hiester Hall	Pollock Halls	0	0	0	Full coverage	SD/MP	Yes	Yes	8
Mifflin Hall	Pollock Halls	0	2	0	Full coverage	SD/MP	Yes	Yes	8
Porter Hall	Pollock Halls	0	1	1	Full coverage	SD/MP	Yes	Yes	10
Ritner Hall	Pollock Halls	0	0	0	Full coverage	SD/MP	Yes	Yes	8
Shulze Hall	Pollock Halls	1	0	0	Full coverage	SD/MP	Yes	Yes	8
Shunk Hall	Pollock Halls	0	0	2	Full coverage	SD/MP	Yes	Yes	8
Wolf Hall	Pollock Halls	0	0	0	Full coverage	SD/MP	Yes	Yes	9
Beam Hall	North Halls	0	0	0	Full coverage	SD/MP	Yes	Yes	8
Holmes Hall	North Halls	0	0	0	Full coverage	SD/MP	Yes	Yes	8
Leete Hall	North Halls	0	0	0	Full coverage	SD/MP	Yes	Yes	8
Runkle Hall	North Halls	0	0	0	Full coverage	SD/MP	Yes	Yes	8
Nittany 11	Nittany Apts.	0	0	0	Full coverage	SD	Yes	N/A	N/A
Nittany 12	Nittany Apts.	0	0	0	Full coverage	SD	Yes	N/A	N/A
Nittany 13	Nittany Apts.	0	0	0	Full coverage	SD	Yes	N/A	N/A
Nittany 14	Nittany Apts.	0	0	0	Full coverage	SD	Yes	N/A	N/A
Nittany 15	Nittany Apts.	0	0	0	Full coverage	SD	Yes	N/A	N/A
Nittany 16	Nittany Apts.	0	0	0	Full coverage	SD	Yes	N/A	N/A
Nittany 17	Nittany Apts.	0	0	0	Full coverage	SD	Yes	N/A	N/A
Nittany 21	Nittany Apts.	0	0	0	Full coverage	SD	Yes	N/A	N/A
Nittany 22	Nittany Apts.	0	0	0	Full coverage	SD	Yes	N/A	N/A
Nittany 23	Nittany Apts.	0	0	0	Full coverage	SD	Yes	N/A	N/A
Nittany 24	Nittany Apts.	0	0	0	Full coverage	SD	Yes	N/A	N/A
Nittany 25	Nittany Apts.	0	0	0	Full coverage	SD	Yes	N/A	N/A
Nittany 31	Nittany Apts.	0	0	0	Full coverage	SD	Yes	N/A	N/A
Nittany 32	Nittany Apts.	0	0	0	Full coverage	SD	Yes	N/A	N/A

Building	Area	Total Fires			Sprinkler Protection Full Coverage = All common areas & individual rooms	Fire Alarm System SD (smoke detector) MP (manual pull station)	Monitored Fire Alarm System	Fire Rated Corridors	# Fire Drills
		2011	2012	2013					
Nittany 33	Nittany Apts.	0	0	0	Full coverage	SD	Yes	N/A	N/A
Nittany 34	Nittany Apts.	0	0	0	Full coverage	SD	Yes	N/A	N/A
Nittany 35	Nittany Apts.	0	0	0	Full coverage	SD	Yes	N/A	N/A
Nittany 41	Nittany Apts.	0	0	0	Full coverage	SD	Yes	N/A	N/A
Nittany 42	Nittany Apts.	0	0	0	Full coverage	SD	Yes	N/A	N/A
Nittany 43	Nittany Apts.	0	0	0	Full coverage	SD	Yes	N/A	N/A
Nittany 44	Nittany Apts.	0	0	0	Full coverage	SD	Yes	N/A	N/A
Nittany 45	Nittany Apts.	0	0	0	Full coverage	SD	Yes	N/A	N/A
Nittany 51	Nittany Apts.	0	0	0	Full coverage	SD	Yes	N/A	N/A
Nittany 52	Nittany Apts.	0	0	0	Full coverage	SD	Yes	N/A	N/A
Nittany 53	Nittany Apts.	0	0	0	Full coverage	SD	Yes	N/A	N/A
Nittany 54	Nittany Apts.	0	0	0	Full coverage	SD	Yes	N/A	N/A
Nittany 55	Nittany Apts.	0	0	0	Full coverage	SD	Yes	N/A	N/A
Nittany 56	Nittany Apts.	1	0	0	Full coverage	SD	Yes	N/A	N/A
Nittany 57	Nittany Apts.	0	0	0	Full coverage	SD	Yes	N/A	N/A
Nittany Hall	Nittany Apts.	0	0	0	Full coverage	SD/MP	Yes	Yes	8
Atherton Hall	South Halls	0	0	0	Full coverage	SD/MP	Yes	Yes	7
Cooper Hall	South Halls	0	0	0	Full coverage	SD/MP	Yes	Yes	8
Cross Hall	South Halls	0	0	0	Full coverage	SD/MP	Yes	Yes	4
Ewing Hall	South Halls	0	0	0	Full coverage	SD/MP	Yes	Yes	4
Haller Hall	South Halls	0	0	0	Full coverage	SD/MP	Yes	Yes	4
Hibbs Hall	South Halls	0	0	0	Full coverage	SD/MP	Yes	Yes	8
Hoyt Hall	South Halls	0	0	0	Full coverage	SD/MP	Yes	Yes	8
Lyons Hall	South Halls	0	0	0	Full coverage	SD/MP	Yes	Yes	4
McElwain Hall	South Halls	0	1	0	Full coverage	SD/MP	Yes	Yes	9
Simmons Hall	South Halls	0	0	0	Full coverage	SD/MP	Yes	Yes	9
Stephens Hall	South Halls	0	0	0	Full coverage	SD/MP	Yes	Yes	4
Chace Hall	South Halls	*	*	0	Full coverage	SD/MP	Yes	Yes	4
Bigler Hall	East Halls	1	0	0	Full coverage	SD/MP	Yes	Yes	8
Brumbaugh Hall	East Halls	0	0	0	Full coverage	SD/MP	Yes	Yes	8
Curtin Hall	East Halls	0	0	0	Full coverage	SD/MP	Yes	Yes	8
Geary Hall	East Halls	0	0	0	Full coverage	SD/MP	Yes	Yes	8
Hastings Hall	East Halls	0	0	0	Full coverage	SD/MP	Yes	Yes	8
McKean Hall	East Halls	0	0	0	Full coverage	SD/MP	Yes	Yes	8
Packer Hall	East Halls	2	0	0	Full coverage	SD/MP	Yes	Yes	8
Pennypacker Hall	East Halls	0	0	0	Full coverage	SD/MP	Yes	Yes	8
Pinchot Hall	East Halls	1	0	0	Full coverage	SD/MP	Yes	Yes	8
Snyder Hall	East Halls	0	0	0	Full coverage	SD/MP	Yes	Yes	8
Sproul Hall	East Halls	1	0	0	Full coverage	SD/MP	Yes	Yes	8
Stone Hall	East Halls	0	0	0	Full coverage	SD/MP	Yes	Yes	8
Stuart Hall	East Halls	0	0	1	Full coverage	SD/MP	Yes	Yes	8
Tener Hall	East Halls	1	0	0	Full coverage	SD/MP	Yes	Yes	8
Brill Hall	EVT	0	1	0	Full coverage	SD/MP	Yes	Yes	8
Curry Hall	EVT	0	0	0	Full coverage	SD/MP	Yes	Yes	11
Harris Hall	EVT	0	0	0	Full coverage	SD/MP	Yes	Yes	8
Miller Hall	EVT	0	0	0	Full coverage	SD/MP	Yes	Yes	8
Nelson Hall	EVT	0	0	0	Full coverage	SD/MP	Yes	Yes	8
Panofsky Hall	EVT	0	0	1	Full coverage	SD/MP	Yes	Yes	8
Young Hall	EVT	0	0	0	Full coverage	SD/MP	Yes	Yes	11

Building	Area	Total Fires			Sprinkler Protection Full Coverage = All common areas & individual rooms	Fire Alarm System SD (smoke detector) MP (manual pull station)	Monitored Fire Alarm System	Fire Rated Corridors	# Fire Drills
		2011	2012	2013					
Bernreuter Hall	WC	0	0	0	Full coverage	SD	Yes	N/A	N/A
Cunningham Hall	WC	0	0	0	Full coverage	SD	Yes	N/A	9
Donkin Hall	WC	0	0	0	Full coverage	SD	Yes	N/A	N/A
Dunham Hall	WC	0	0	0	Full coverage	SD/MP	Yes	Yes	9
Farrell Hall	WC	0	0	0	Full coverage	SD	Yes	N/A	N/A
Ferguson Hall	WC	0	0	0	Full coverage	SD	Yes	N/A	8
Garban Hall	WC	0	0	0	Full coverage	SD/MP	Yes	Yes	9
Grubb Hall	WC	0	0	0	Full coverage	SD/MP	Yes	Yes	9
Haffner Hall	WC	0	0	0	Full coverage	SD	Yes	N/A	8
Holderman Hall	WC	0	1	0	Full coverage	SD	Yes	N/A	N/A
Ikenberry Hall	WC	0	0	0	Full coverage	SD	Yes	N/A	9
Lovejoy Hall	WC	0	0	0	Full coverage	SD	Yes	N/A	N/A
Osborn Hall	WC	0	0	0	Full coverage	SD	Yes	N/A	N/A
Palladino Hall	WC	0	0	0	Full coverage	SD	Yes	N/A	N/A
Patterson Hall	WC	0	0	0	Full coverage	SD/MP	Yes	Yes	7
Ray Hall	WC	0	0	1	Full coverage	SD	Yes	N/A	1

Chace Hall – New (Occupied Aug. 2014) EVT = Eastview Terrace WC = White Course Apartments N/A = Not Applicable

Student Employee Housing (Used by a limited number of student employees)

Building	Area	Total Fires			Sprinkler Protection Full Coverage = All common areas & individual rooms	Fire Alarm System SD (smoke detector) MP (manual pull station)	Monitored Fire Alarm System	Fire Rated Corridors	# Fire Drills
		2011	2012	2013					
Beef and Sheep Center	Agriculture	0	0	0	None	SD/MP	Yes	N/A	0
Dairy Barn Center	Agriculture	0	0	0	None	SD	Yes	Yes	0
Dairy Herd Managers House	Agriculture	0	0	0	None	SD	No	N/A	0
Deer Pen Office Center	Agriculture	0	0	0	None	SD	No	N/A	0
Head House I	Agriculture	0	0	0	None	SD/MP	Yes	Yes	0
New Horse Barn	Agriculture	0	0	0	None	SD	Yes	N/A	0
Meats Lab	Agriculture	0	0	0	None	SD	Yes	Yes	0
Poultry Center	Agriculture	0	0	0	None	SD/MP	Yes	Yes	0
Swine Center	Agriculture	0	0	0	None	SD	No	N/A	0
Stone Valley–3323 Lisa Lane	Athletics	0	0	0	None	SD	No	N/A	0

N/A = Not Applicable

Residence Hall Fire Drills

Fire drills are conducted in all on-campus Housing and Food Services-operated residence halls during the school year to allow residents to become familiar with building alarm systems and practice their evacuation skills. The drills are coordinated and conducted by the Residence Life Coordinators, Resident Assistants, Housing Management, University Police, and Environmental Health and Safety. All people inside the residence hall during the drill are required to evacuate the building.

Prohibitions on Portable Electrical Appliances, Smoking, and Open Flames

All on-campus housing facilities prohibit the following activities and items.

1. Smoking is not permitted in any building.
2. The presence or use of candles, incense burners, oil lamps, and other open-flame devices is not permitted in on-campus housing facilities.
3. The presence or use of torchiere halogen floor lamps is not permitted in any building.
4. Individuals shall not obstruct or tamper with fire safety equipment (e.g., sprinklers, fire alarms, fire extinguishers).
5. The possession or use of fireworks is not permitted.
6. Occupant-provided refrigerators and microwaves are not permitted in on-campus housing facilities.

Additional information about residence hall living and policies is available at:

<http://www.hfs.psu.edu/housing/>



Evacuation Procedures

Penn State Housing and Residence Life provide residents with fire evacuation procedures and conduct fire drills during each semester. Residents are informed of the following procedures.

If you discover a fire in the residence hall:

1. Immediately activate the nearest manual fire alarm pull station. The fire alarm system will alert people to evacuate the building.
2. Call 911 from a safe location to report the fire and to give as much information as possible.

Evacuation from the building:

1. Upon activation of the fire alarm system, everyone shall immediately leave the building.
2. Feel the door. If it is hot, do not open it.
3. If the door is cool, crouch low and open the door slowly. Close the door quickly if smoke is present.
4. If the hallway is smoke-free or there is a light smoke condition, proceed to the nearest exit. If a light smoke condition is present stay below the smoke (crouch or crawl).
5. Leave the building and meet at your designated evacuation meeting site.
6. Never use elevators during a fire evacuation.

If you are trapped in your room:

1. Place material (e.g., clothing, rug) at base of door to prevent smoke from entering the room.
2. Open your window, wave a piece of material and yell to attract the attention of people outside.
3. Call 911 and report your location.
4. Stay low; breathe fresh air near the windows.
5. Await rescue.

Fire Safety Education and Training Programs for Students, Faculty, and Staff

Environmental Health and Safety (EHS), in coordination with Residence Life and Housing and Food Services, provides annual training to Resident Assistants (RA), and Residence Life Coordinators.

Topics addressed during this training include:

1. Fire prevention in the residence hall
2. What to do in the event of a fire
3. Evacuation planning
4. How to report a fire or other emergency
5. How residence hall fire safety systems operate

Additional fire safety training and education programs for residence hall students are coordinated by Resident Assistants and Community Assistants.

Other general safety and fire safety information is available to students, faculty, and staff on the Penn State Environmental Health and Safety website: <http://www.ehs.psu.edu>.



Fire Incident Reporting

Students, faculty, and staff are instructed to call 911 to report a fire emergency.

Immediate notification for a non-emergency incident (e.g., fire is out, evidence that something burned, attempted intentional burning of material) shall be made to:

- PSU Police 814-863-1111
- Environmental Health and Safety..... 814-865-6391

HOUSING AND RESIDENCE LIFE AREA OFFICES:

- Central Housing Office..... 814-865-7543
- Central Residence Life 814-863-1710
- East Housing Office..... 814-865-1791
- East Residence Life 814-865-5375
- South Housing Office 814-865-2391
- South Residence Life 814-865-8322
- Pollock Housing Office..... 814-865-4321
- Pollock Residence Life..... 814-865-6503
- North/West Housing Office..... 814-865-9526
- North/West Residence Life 814-865-5951
- White Course Housing Office 814-865-6025
- White Course Residence Life 814-865-6025
- Nittany Apartments Housing Office 814-863-2577
- Nittany Apartments Residence Life..... 814-865-8322
- Eastview Terrace Housing Office..... 814-865-2391
- Eastview Terrace Residence Life 814-865-8322

Plans for Future Improvements in Fire Safety

Penn State continues to monitor trends related to residence hall fire incidents and alarms to provide a fire-safe living environment for all students. New programs and policies are developed as needed to help ensure the safety of all students, faculty, and staff. Beginning May 2014, Hibbs and Stephens Hall will undergo building renovation. This renovation will include upgrading the fire alarm system so all room smoke detectors will be monitored by University Police. Currently, only the manual fire alarm system, public space smoke detectors, and the automatic fire suppression system are monitored. The monitoring of the individual room smoke detectors will improve the capability to detect a fire or smoke condition to notify occupants and provide quicker response by emergency services.

IMPORTANT PHONE NUMBERS

Penn State University Police/Fire/EMS
 814-863-1111
 911
 Eisenhower Parking Deck, University Park

State College Borough Police Department
 814-234-7150
 911
 South Allen Street, State College

University Health Services
 814-863-0774
 Student Health Center, University Park

Mount Nittany Medical Center
 814-231-7000
 East Park Avenue, State College

Centre County CAN HELP Line
 1-800-643-5432
 24-Hour Crisis Hotline

Environmental Health and Safety
 814-865-6391
 Eisenhower Parking Deck, University Park

In Case of Emergency

DIAL: 911

on any telephone

If you are on campus, you can reach University Police by dialing **3-1111** from any campus phone or **814-863-1111** from any other phone.

University Police may also be reached by pressing the emergency button on any of the emergency or courtesy phones located around campus.





PSUAlert

PSUAlert is the name of Pennsylvania State University's mass notification service. This system allows the university to send text messages, voice mails, and e-mails to the campus community concerning weather-related school closings, delays, and other emergencies. The service is available to all employees and students of Penn State. The university does not charge for the service, however there may be a fee charged based on your phone plan. To register, go to <http://psualert.psu.edu> and follow the instructions.

Register to Vote

All students are urged to register to vote in local, state, and national elections. Go to <http://www.votespa.com/portal/server.pt/community/home/13514> for a printable Voter Registration Application. Note that Adobe Acrobat must be loaded to view the Voter Registration Application.

