

# Policies, Safety & U

2013 ANNUAL SECURITY REPORT



# Table of Contents

From the President .....	4
From the Chancellor of Penn State New Kensington .....	4

## ANNUAL SECURITY REPORT

PREPARATION OF THE ANNUAL SECURITY REPORT AND DISCLOSURE OF CRIME STATISTICS .....	5
ABOUT SAFETY AND SECURITY AT PENN STATE NEW KENSINGTON .....	5
Role, Authority, and Training .....	5
Safety, Our Number One Priority .....	5
Working Relationship with Local, State, and Federal Law Enforcement Agencies .....	5
Crimes Involving Student Organizations at Off-Campus Locations .....	6
REPORTING CRIMES AND OTHER EMERGENCIES .....	6
Voluntary, Confidential Reporting .....	6
Reporting to University Police .....	6
Reporting to Other Campus Security Authorities .....	6
TIMELY WARNING REPORTS — CRIME ALERTS .....	7
EMERGENCY RESPONSE AND EVACUATION PROCEDURES .....	7
Emergency Management at Penn State University .....	7
Drills, Exercises, and Training .....	7
Emergency Notification .....	7
SECURITY OF and ACCESS TO PENN STATE NEW KENSINGTON FACILITIES .....	9
Security Considerations for the Maintenance of Campus Facilities .....	9
PENN STATE'S RESPONSE TO SEXUAL AND GENDER VIOLENCE .....	9
Personal Safety .....	9
Defining Rape and Sexual Assault .....	9
Our Commitment to Addressing Sexual Assault/Rape .....	10
Sexual Assault Prevention Education Programs .....	11
Sex Offender Registration – Campus Sex Crimes Prevention Act .....	11
CAMPUS SECURITY POLICIES; CRIME PREVENTION & SAFETY AWARENESS PROGRAMS .....	11
Behavioral Threat Management Team .....	11
Weapons Policy .....	11
Fire Safety .....	11
Pennsylvania Crime Victim Rights .....	12
Student Conduct .....	12
Parental Notification Policy .....	13
Missing Student Policy .....	13
Daily Crime Log .....	14
Crime Prevention and Safety Awareness Programs .....	14







PENN STATE UNIVERSITY POLICIES GOVERNING ALCOHOL AND OTHER DRUGS .....	14
Penn State's Alcohol and Drug Policy .....	14
Pennsylvania Alcohol-Related Offenses .....	15
Related Drug Offenses .....	17
Controlled Substances Act .....	18
Drugs Risks and Consequences .....	19
Drug and Alcohol Abuse Education Programs .....	20
ANNUAL DISCLOSURE OF CRIME STATISTICS .....	21
Clery Act Crimes .....	21
<b>THE PENNSYLVANIA UNIFORM CRIME REPORT ACT ....</b>	<b>24</b>
IMPORTANT PHONE NUMBERS .....	25
PSUTXT .....	25
Register to Vote .....	25



## From the Chancellor of Penn State New Kensington

To the University Community—

This report, developed by Penn State's Safety and Security department in collaboration with others, contains valuable and important information for our campus community. Safety and security is an important component of every campus and this material provides you with an understanding of the services Penn State provides, our commitment to victims of crimes, and the extensive services we make available to crime victims. You'll also find security policies and procedures, crime data, and crime prevention efforts listed in the accompanying pages. Recent events remind us that we all have a responsibility to help provide a safe and secure environment across campuses and to ensure that Penn State is in compliance with the Clery Act. We all need to read this report to better understand our individual and joint responsibilities in dealing with security and safety and compliance with the Clery Act. I hope you'll take a few minutes to become familiar with the content of this report and keep it accessible for future use.

**Dr. Kevin Snider**

*Chancellor of Penn State New Kensington*

## From the President

To the University Community—

It is up to each one of us to help foster a secure and supportive environment at Penn State—an environment where individuals can feel safe to visit, learn, work and live. Primary to this goal are the principles of responsibility, respect, and integrity. These values are essential to any community, and serve as the foundation for the success and productivity of our students, faculty and staff. Safety on campus is one of the highest concerns. A truly safe campus can only be achieved through the cooperation of everyone. This publication contains information about campus safety measures and reports statistics about crime in our University community. It also describes our efforts to combat alcohol and drug abuse. Please take the time to read it and help foster a more caring and safe environment.

**Rodney A. Erickson**  
*President*

### Accessibility to Information and Non-Discrimination Policy

This publication is available in alternative format upon request. The Pennsylvania State University is committed to the policy that all persons shall have equal access to programs, facilities, admission and employment without regard to personal characteristics not related to ability, performance, or qualifications as determined by University policy or by state or federal authorities. It is the policy of the University to maintain an academic and work environment free of discrimination, including harassment. The Pennsylvania State University prohibits discrimination and harassment against any person because of age, ancestry, color, disability or handicap, genetic information, national origin, race, religious creed, sex, sexual orientation, gender identity or veteran status and retaliation due to the reporting of discrimination or harassment. Discrimination, harassment, or retaliation against faculty, staff or students will not be tolerated at The Pennsylvania State University. Direct all inquiries regarding this Nondiscrimination Policy to the Affirmative Action Director, The Pennsylvania State University, 328 Boucke Building, University Park, PA 168022-2801; tel. 814-863-0471/TTY.

# Annual Security Report

## PREPARATION OF THE ANNUAL SECURITY REPORT AND DISCLOSURE OF CRIME STATISTICS

The Office of Business and Finance prepares this report to comply with the Jeanne Clery Disclosure of Campus Security and Crime Statistics Act using information collected and maintained by the Office of Business and Finance, designated Campus Security Authorities, and local police agencies surrounding Penn State New Kensington. Each of these offices provides updated policy information and crime data.

This report provides statistics for the previous three years concerning reported crimes that occurred on campus, in certain off-campus buildings or property owned, leased, or controlled by Penn State New Kensington. This report also includes institutional policies concerning campus security, such as policies regarding sexual assault, and alcohol and other drugs. The statistics reported here generally reflect the number of criminal incidents reported to the various authorities. The statistics reported on liquor laws, drug laws and weapons offenses represent the number of people arrested or referred to campus judicial authorities for respective violations.

The University distributes a notice of the availability of this Annual Security Report by October 1 of each year to every member of the University community. Anyone, including prospective students and employees, may obtain a paper copy of this report by contacting the Business/Finance Office in the Enrollment Services Area at 724-334-6025 or by visiting <http://www.police.psu.edu/cleryact/>.

## ABOUT SAFETY AND SECURITY AT PENN STATE NEW KENSINGTON

### *Role, Authority, and Training*

The Director of Business and Finance is responsible for the safety and security program at Penn State New Kensington. Penn State New Kensington does not employ any full-time security personnel; however, five part-time officers provide routine security services to the campus. These officers do not have arrest authority.

The Director of Business and Finance and/or the Director of Student Affairs investigate reported minor criminal incidents or infractions. The University refers serious criminal incidents to the Upper Burrell Police or Pennsylvania State Police for appropriate follow-up. Penn State Kensington encourages all campus community members to report crimes, serious incidents, and emergency situations to the Upper Burrell Police (724-335-0664), Security Office (Between 8:00 a.m. - 5:00 p.m. please contact the Business and Finance Office in the Enrollment Services Area at 724-334-6025; after 5:00 p.m. and on weekends, security officers are located in the Main Lobby, and can be reached at 724-334-6120), or the Office of Student Affairs (724-334-6062).

Anyone who has a concern about campus safety and security should contact the Office of Business and Finance Office at 724-334-6025.



### *Safety Committee*

Penn State New Kensington has established a safety committee that meets quarterly to review and make recommendations on various issues concerning safety and security. All recommendations are forwarded to the administrative team for approval. Upon approval, it is the campus safety committees' responsibility to see that the changes in procedure, policy, or practice have been initiated.

**Mission Statement:** It is the mission of the campus administration to establish and provide a safe environment for the campus community and its constituents. We are committed to the protection of life and property; the preservation of peace, order and safety; and the fair and impartial enforcement of state and federal laws and University policies.

### *Safety, Our Number One Priority*

Penn State New Kensington takes great pride in the campus community and offers students, faculty, and staff many advantages. This community is a great place to live, learn, work, and study; however, this does not mean that the campus community is immune from all of the other unfortunate circumstances that arise in other communities. With that in mind, Penn State New Kensington has taken progressive measures to create and maintain a reasonably safety environment on campus.

Though the University is progressive with its policies, programs, and education, it is up to each one of us to live with a sense of awareness and use reasonable judgment when living, working, or visiting on campus.

### *Working Relationship with Local, State, and Federal Law Enforcement Agencies*

Penn State New Kensington maintains a cooperative relationship with the Upper Burrell Police, Pennsylvania State Police, and other surrounding police agencies. The University does not have any formal agreements with supporting law enforcement agencies.

As a matter of policy, the University will refer all serious criminal matters to the Upper Burrell Police or to the Pennsylvania State Police for follow-up and further investigation.



## Crimes Involving Student Organizations at Off-Campus Locations

Penn State New Kensington does not have any officially recognized student organizations with off-campus locations.

## REPORTING CRIMES AND OTHER EMERGENCIES

The University has a number of ways for campus community members and visitors to report crimes, serious incidents, and other emergencies to appropriate University officials. Regardless of how and where you decide to report these incidents, it is critical for the safety of the entire Penn State New Kensington community that you immediately report all incidents to the Office of Business and Finance, the Dean of Students, or to the Upper Burrell Police so there is an appropriate investigation to determine if follow-up actions are required, including issuing a Crime Alert or emergency notification.

### Voluntary, Confidential Reporting

If crimes are never reported, little can be done to help other members of the community from also being victims. We encourage University community member to report crimes promptly and to participate in and support crime prevention efforts. The University community will be much safer when all community members participate in safety and security initiatives.

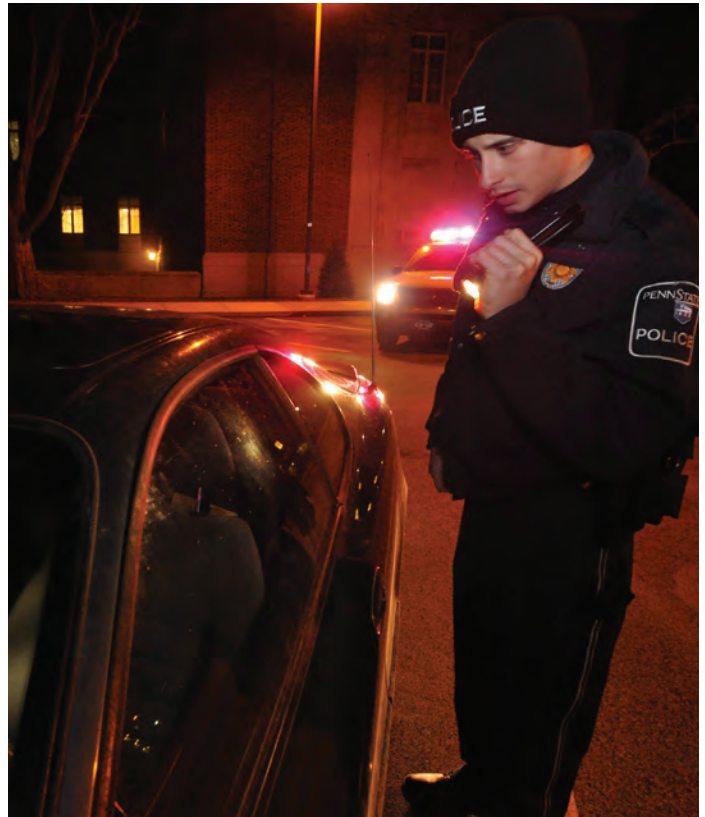
If you are the victim of a crime or want to report a crime you are aware of, but do not want to pursue action within the University or criminal justice system, we ask that you consider filing a voluntary, confidential report. Depending upon the circumstances of the crime you are reporting, you may be able file a report while maintaining your confidentiality. The Upper Burrell Police Department will accept confidential reports. Additionally, all campus incidents or crimes can be reported confidentially to the Director of Student Affairs, Chancellor or the Director of Business & Finance.

The purpose of a confidential report is to comply with your wish to keep your personally identifying information confidential, while taking steps to ensure your safety and the safety of others. The confidential reports allow the University to compile accurate records on the number and types of incidents occurring on campus. Reports filed in this manner are counted and disclosed in the Annual Security and Report. In limited circumstances, the department may not be able to assure confidentiality and will inform you in those cases.

Anyone may call the Office of Business and Finance, the Dean of Students Office, or Security (after hours) to report concerning information. Callers may remain anonymous.

### Reporting to University Officials

We encourage all members of Penn State New Kensington community to report all crimes and other emergencies to Office of Business and Finance, the Office of Student Affairs, the Security Office, or the Upper Burrell Police Department, in a timely manner. The Office of Business and Finance should be notified of any crime, whether or not an investigation continues, to assure the University can assess any and all security concerns and inform the community if there is a significant threat to the University community.



### Emergency Phones

The University has installed emergency phones in all elevators located on campus. The elevator phones ring the business office during normal work hours. After four rings, the calls are forwarded to a mobile phone carried by campus security officers.

### Anonymously

If you are interested in reporting a crime anonymously, you can utilize the Penn State Silent Witness program, which can be accessed through: <http://www.police.psu.edu/witness/>. By policy, we do not attempt to trace the origin of the person who submits this form, unless such is deemed necessary for public safety. You can also submit tips through Pennsylvania Crime Stoppers at 1-800-4-PA-TIPS or via the Pennsylvania Crime Stoppers' website (<http://www.pacrimestoppers.org/crimestoppers>).

### Reporting to Other Campus Security Authorities

While the University prefers that community members promptly report all crimes and other emergencies directly to the Office of Business and Finance, the Security Office (after hours), or the Upper Burrell Police at 911, we also recognize that some may prefer to report to other individuals or University offices. The Clery Act recognizes certain University officials and offices as "Campus Security Authorities (CSA)." The act defines these individuals as "official of an institution who has significant responsibility for student and campus activities, including, but not limited to, student housing, student discipline, and campus judicial proceedings. An official is defined as any person who has the authority and the duty to take action or respond to particular issues on behalf of the institution."

While the University has identified several hundred CSAs at University Park, we officially designate the following offices as places where campus community members should report crimes:

Official	Campus Address	Phone Number
Office for Student Affairs	3550 7th Sreet Rd. New Kensington, PA 15068	724-334-6061
Office of Business and Finance	3550 7th Sreet Rd. New Kensington, PA 15068	724-334-6022
Security Office Mon. – Fri. 4:00 p.m. - 11:00 p.m. Sat., Sun. 7:00 a.m. - 11:00 p.m.	3550 7th Sreet Rd. New Kensington, PA 15068	724-334-6120

### Pastoral and Professional Counselors

According to the Clery Act, pastoral and professional counselors who are appropriately credentialed and hired by Penn State to serve in a counseling role are not considered Campus Security Authorities when they are acting in the counseling role. As a matter of policy, the University encourages pastoral and professional counselors to notify those whom they are counseling of the voluntary, confidential reporting options available to them.

## TIMELY WARNING REPORTS — CRIME ALERTS

In an effort to provide timely notice to the campus community in the event of a Clery Act crime that may pose a serious or ongoing threat to members of the community, Penn State New Kensington issues Timely Warning Notices. The University will generally issue Timely Warning Notices for the following crimes: arson; aggravated assault; criminal homicide; robbery; burglary; sex assaults; and hate crimes. The University will post these warnings through a variety of ways, including but not limited to posters, emails, and media. The University also has the ability to send text message alerts to those who register their cell phone numbers. The text messaging can be a very effective way to send important information to the campus community.

The purpose of these Timely Warning Notices is to notify the campus community of the incident and to provide information that may enable community members to protect themselves from similar incidents. The University will issue Timely Warning Notices whenever the following criteria are met: (1) a crime is committed; (2) the perpetrator has not been apprehended; and (3) there is a substantial risk to the physical safety of other members of the campus community because of this crime. Such crimes include, but are not limited to: 1) Clery Act crimes that are reported to any campus security authority or the local police; or 2) the University determines that the incident represents an on-going threat to the campus community.

Additionally, the University may, in some circumstances, issue Crime Alerts when there is a pattern of crimes against persons or property.

At Penn State New Kensington the Director of Business and Finance shall, in consultation with the Director of Student Affairs, determine whether a Timely Warning Notice is required, based on the criteria outlined in this policy statement. The University may issue Timely Warning Notices for off-campus crimes if the crime

occurred in a non-university owned property used and frequented by University community members.

## EMERGENCY RESPONSE AND EVACUATION PROCEDURES

### Emergency Management at Penn State University

The Office of Emergency Management is responsible for the Comprehensive Emergency Management Plan (CEMP). This plan is designed to be an all-hazards disaster response and emergency management plan that complies with FEMA guidelines for Higher Education, including planning, mitigation, response, and recovery actions.

Our priorities are:

- Life safety, infrastructure integrity, and environmental protection during an emergency
- Coordination with University departments to write, maintain, test, and exercise the CEMP
- Cooperation, integration, and mutual aid with local, state, and federal planning, response, and public safety agencies and their CEMPs.

A summary of the University's emergency response procedures is located at <http://www.emergencymanagement.psu.edu>. Included on this website is detailed information regarding the University's emergency notification policy, including how to enroll in the emergency notification system to ensure you receive emergency notices on University and cellular telephones.

### Drills, Exercises, and Training

To ensure the University's emergency management plans remain current and actionable, the University will conduct an emergency management exercise at a minimum of once yearly. These exercises may include tabletop drills, emergency operations center exercises, or full-scale emergency response exercises. The University conducts after-action reviews of all emergency management exercises.

In conjunction with at least one emergency management exercise each year, the University will notify the Penn State community of the exercise and remind the community of the information included in the University's publicly available information regarding emergency response procedures (<http://www.emergencymanagement.psu.edu>).

### Emergency Notification

Penn State New Kensington is committed to ensuring the campus community receives timely, accurate, and useful information in the event of a significant emergency or dangerous situation on campus or in the local area that poses an immediate threat to the health and safety of campus community members. The Pennsylvania State University uses an emergency notification system to provide alerts via PSUTXT. PSUTXT is an emergency notification service available to students, faculty, and staff. PSUTXT can be used to send emergency messages within minutes of the occurrence of an incident. Alerts sent by PSUTXT are simulcast to the University community via Penn State's Facebook page, Twitter, or, at the subscriber's choice, his/her email account. All locations except the Pennsylvania College of Technology use PSUTXT for posting emergency alerts.

Penn State conducts a University-wide annual test of the system. The following procedures outline the process the University uses when issuing emergency notifications.

**Confirming the Existence of a Significant Emergency or Dangerous Situation and Initiating the Emergency Notification System:**

First responders, including campus administrators, Security officers, Upper Burrell Police, or the Pennsylvania State Police may become aware of a critical incident or other emergency situation that potentially affects the health and/or safety of the campus community.

Once first responders confirm that there is, in fact, an emergency or dangerous situation that poses an immediate threat to the health or safety of some or all members of the campus community, first responders will notify the Chancellor, Public Relations Specialist, or other authorized University office to issue an emergency notification.

The University's authorized representatives<sup>1</sup> will immediately initiate all or some portions of the University's emergency notification system. If, in the professional judgment of first responders, issuing a notification potentially compromises efforts to assist a victim or to contain, respond to, or otherwise mitigate the emergency, the University may elect to delay issuing an emergency notifications. As soon as the condition that may compromise efforts is no longer present, the University will issue the emergency notification to the campus community.

**Determining the Appropriate Segment or Segments of the Campus Community to Receive an Emergency Notification:**

University and/or local first responders on the scene of a critical incident or dangerous situation will assist those preparing the emergency notification with determining what segment or segments of the University community should receive the notification. Generally, campus community members in the immediate area of the dangerous situation (i.e. the building, adjacent buildings, or surrounding area) will receive the emergency notification first. The University may issue subsequent notifications to a wider group of community members. In addition to the emergency notification that may be issued via the University mass notification system, the University will also post applicable messages about the dangerous condition on the University website to ensure the rest of the campus is aware of the situation and the steps they should take to maintain personal and campus safety. If the emergency affects a significant portion of the entire campus, University officials will distribute the notification to the entire campus community.

**Determining the Contents of the Emergency Notification:**

The office responsible for issuing the emergency notification (usually the Department of Business and Finance or the Office of Student Affairs) will, in concert with University and local first responders, determine the contents of the notification. The University has developed a wide range of template messages addressing several different emergency situations. The individual authorizing the alert will select the template message most appropriate to the on-going situation and modify it to address the specifics of the present incident.



In those cases where there are no pre-determined template messages in the system, the individual authorizing the alert will develop the most succinct message to convey the appropriate information to the community. The goal is to ensure individuals are aware of the situation and that they know the steps to take to safeguard their personal and community safety.

**Procedures Used to Notify the Campus Community:**

In the event of a situation that poses an immediate threat to members of the campus community, the University has various systems in place for communicating information quickly. Some or all of these methods of communication may be activated in the event of emergency notification to all or a segment of the campus community. These methods of communication include the mass notification system PSUTXT, the University's email system, and verbal announcement within a building and public address system on police cars. The University will post updates during a critical incident on the homepage. If the situation warrants, the University will establish a telephone call-in center to communicate with the University community during an emergency situation.

**Procedures for Disseminating Emergency Information to the Larger Community (i.e., individuals and organizations outside the campus community):**

If the University activates its emergency notification system in response to a situation that poses an immediate threat to members of the campus community, several offices at the University are responsible for notifying the larger community about the situation and steps the University has taken to address the emergency. Primarily, the Office of Student Affairs Public Information is responsible for crisis communications and for updating notices on Facebook and other social networking platforms and for maintaining communications with national, regional, and local news and radio outlets.

<sup>1</sup> A number of Penn State officials are authorized to activate the emergency notification system. These officials include: Senior VP for Finance and Business, VP for University Relations, Asst. VP for UP&PS, UP&PS Compliance Coordinator, Director of Emergency Management, PSU Police Chief, PSU Asst. Police Chief, PSUPD Officer in Charge, PSUPD Dispatcher, Campus Chancellors, Campus Directors of Business Services, and designated Vice Presidents on the Commonwealth Campuses.



### **Enrolling in the University's Emergency Notification System:**

We encourage members of the campus community to enroll in the PSUTXT system by visiting <http://psutxt.psu.edu>. We encourage University community members to regularly update their information at the same site.

## **SECURITY OF and ACCESS TO PENN STATE NEW KENSINGTON FACILITIES**

At Penn State New Kensington, office buildings are open Monday through Friday from 8:00 a.m. until 5:00 p.m. and academic buildings generally are open from 7:00 a.m. until 11:00 p.m. These facilities are intended for use by students, employees, and guests of the University. Access to an individual classroom, of course, is limited to those enrolled in the courses meeting there. Likewise, access to most programs is limited to those enrolled in the program.

### **Security Considerations for the Maintenance of Campus Facilities**

Penn State Kensington maintains campus facilities with security as a primary concern. Authorized individuals have access to buildings for study, work, or teaching, but not unrelated functions. Therefore, only those who have demonstrated a need for them are issued keys to a building.

Landscaping and outdoor lighting on campus are designed for security, with the attempt to provide pedestrians peace of mind. Sidewalks are designed to provide well-traveled, lighted routes from parking areas to buildings and from building to building. Grounds keeping personnel trim shrubs from sidewalks, walkways, and building entrances to provide a well-lighted route to buildings. All campus walkways are inspected at least twice a year to ensure adequate lighting. Burned-out lights are replaced promptly.

## **PENN STATE'S RESPONSE TO SEXUAL AND GENDER VIOLENCE**

### **Personal Safety**

Theft, disorderly conduct, and alcohol related offenses are very common on university campuses. However, they don't stand alone. Despite law enforcement's efforts, serious crimes do occur on campuses. It is important to report any suspicious incidents to police and always remain alert and vigilant.

One of the more serious crimes that too often are unreported is sexual assault. It is important to know what these crimes are, because in many cases, victims do not realize that have been victimized. Additionally, crimes of this nature are very difficult for victims to report for a number of very complex reasons.

We provide the following information to assist those help who may have been victims of sexual assault or who have a friend who has been sexually assaulted. There are many guidelines to help you be more alert and aware of a situation to prevent such serious crimes, including:

- Know your surroundings
- Be alert
- Call for help
- Report any suspicious activity/persons immediately

### **Defining Rape and Sexual Assault**

In Pennsylvania, RAPE is defined as when a person engages in sexual intercourse with a person by forcible compulsion or the threat of forcible compulsion that would prevent resistance by a person of reasonable resolution, or when a person is unconscious or where the person knows that the victim is unaware that the act is occurring.

In Pennsylvania, SEXUAL ASSAULT is defined as when a person engages in sexual intercourse or deviant sexual intercourse with a complainant without the victim's consent.

While these definitions are clear, victims often have difficulty reporting a sexual assault for numerous reasons such as knowing the perpetrator, fear of retaliation, fear of parents knowing about the incident, and fear of getting in trouble with law enforcement. Despite these concerns, it is vital to report such incidents in order to get help.

The following information provides steps to follow should a sexual assault occur:

- ☐ Get to a safe place as soon as possible!
- ☐ Try to preserve all physical evidence – The victim should not bathe, shower, brush teeth, douche, use the toilet, or change clothing until s(he) has a medical exam. Contact a close friend or relative, if available, who can provide support and accompany the victim to the medical exam and/or police department. Advocates from the Women's Resource Center can be available to the victim to provide support.
- ☐ Get medical attention as soon as possible – An exam may reveal the presence of physical injury that the victim is unaware of. Following a sexual assault, antibiotics are typically given at the time of the exam to help prevent the victim from acquiring certain sexually transmitted diseases. Emergency contraceptive pills are offered to all victims at the time of the exam (if the victim presents within 120 hours) to help prevent pregnancy from occurring as a result of the rape. If the victim reports memory loss, loss of consciousness or other circumstances suspicious for a drug-facilitated assault, a urine test may be done if the victim presents within 96 hours. Some of the commonly used "date rape" drugs, however, are only detectable in the urine for six to eight hours after ingestion.
- ☐ Contact the police – Sexual assault is a crime, it is vital to report it. It is important to remember that reporting a crime is not the same as prosecuting the crime. The decision to prosecute may be made at another time. Final decision to prosecute is determined by the District Attorney.
- ☐ Consider talking to a counselor – Seeing a counselor may be important in helping the victim understand her/his feelings and begin the process of recovery.

## Our Commitment to Addressing Sexual Assault/Rape

The University does not tolerate sexual misconduct or abuse, such as sexual assault, rape or any other forms of nonconsensual sexual activity. Sexual misconduct in any form violates the Student Code of Conduct, University policies (<http://guru.psu.edu/policies/ad12.html>), and may violate federal and state laws. Violations of this policy are subject to disciplinary sanctions through the Office of Student Conduct and/or those outlined in applicable University policies (please refer to Policy AD12 SEXUAL ASSAULT, RELATIONSHIP AND DOMESTIC VIOLENCE, AND STALKING). Please visit <http://studentaffairs.psu.edu/womenscenter/awareness/rapeandassault.shtml> to review procedures, policies, and protocols for reporting and addressing allegations of student sexual misconduct. We encourage any person who is the victim of a sexual assault on campus to notify the Director of Business and Finance, the Office of Student Affairs, the Upper Burrell Police, the Pennsylvania State Police or the Emergency Room of Allegheny Valley Hospital as soon as possible following the incident.

The University provides the following rights to all sexual assault victims:

- All basic sexual assault related care for students who receive care at the Allegheny Valley Hospital is free of charge.
- A Victim Resource Officer is available to all victims of crimes.
- On-campus counseling services are available to students and employees through the Counseling Office located in ITC034 (Theatre & IST Building).
- “Trauma Drop” is a special procedure that enables victims of violence to retroactively withdraw from a semester or individual courses.

## University Procedures for Responding to Reports of Sexual Assault

If you or someone you know is the victim of a sexual assault, the victim has several rights, including:

- The right to report the incident to the University Police or local authorities. The University will assist victims in notifying either the local police or the University. Filing a police report does not mean the victim must pursue criminal charges. The victim maintains his or her rights throughout the process.
- In addition to the campus services listed below, there are also several community service organizations that can provide counseling, mental health, and other related services to sexual assault victims. The Office of Women Students can assist with connecting victims to these services. Please note that not all services are available at all campus locations. A listing of resources at each individual Commonwealth Campus can be found at <http://studentaffairs.psu.edu/womenscenter/resources/ccsar.shtml>.
  - **Center for Women Students** – advocacy, referrals, and education ([www.sa.psu.edu/cws](http://www.sa.psu.edu/cws))
  - **Affirmative Action** – diversity education services ([www.psu.edu/dept/aaoffice](http://www.psu.edu/dept/aaoffice))
  - **University Health Services** – medical treatment ([www.sa.psu.edu/uhs](http://www.sa.psu.edu/uhs))
  - **Residence Life** – support and referrals ([www.sa.psu.edu/rl](http://www.sa.psu.edu/rl))

- **Counseling Services** – counseling and referrals ([www.sa.psu.edu/caps](http://www.sa.psu.edu/caps))
- **Judicial Affairs** – support, referrals, and resolution of complaints ([www.sa.psu.edu/ja](http://www.sa.psu.edu/ja))
- **Police Services** – safety support ([www.psu.edu/dept/police](http://www.psu.edu/dept/police))
- **Employee Assistance Program** – counseling for faculty/staff ([www.magellanassist.com](http://www.magellanassist.com))
- **Victim Witness Advocate** – court accompaniment
- **Community-based Rape Crisis/Domestic Violence Services** – shelter, support groups, counseling (listed in blue pages of phone book under “abuse”)
- **Penn State Office of Human Resources** – ([www.ohr.psu.edu](http://www.ohr.psu.edu))
- **Pennsylvania Coalition Against Rape** – 24-hour hotline (1-800-932-4632) ([www.pcar.org](http://www.pcar.org))
- **Pennsylvania Coalition Against Domestic Violence** – 24-hour hotline (1-800-692-7445) ([www.pcadv.org](http://www.pcadv.org))

- If a victim of a sexual assault or relationship violence incident requests a change in her or his living arrangements or academic schedule, the Office of Student Conduct and other offices at the University will assist the individual with making these changes, as long as they are reasonably available.

## University Disciplinary Procedures in Sexual Assault Incidents

If you have been sexually assaulted, you have options for addressing such conduct. You may wish first to discuss the problem privately with a counselor or an adviser in the Center for Women Students, the Center for Psychological Services (CAPS) or another confidential counselor. The University Police are always available to assist a victim with getting the support she/he requests.

The University’s student conduct process is designed to afford a complainant (the person who is bringing a charge) and a respondent (the person who is answering a charge) a fair, prompt, and appropriate resolution process. The process is designed to help persons who need support as they address these incidents.

The Office of Student Conduct (incidents in which the student is enrolled at the Dickinson School of Law are managed by the Law School) manages the resolution proceeding in which a student is the alleged perpetrator. The full text of the protocol for how the University responds to sexual assault complaints through the campus conduct process can be found at <http://studentaffairs.psu.edu/conduct>. The Affirmative Action Office is responsible for managing proceedings for those cases in which an employee is the respondent.

In determining whether the alleged conduct constitutes sexual harassment or assault, the full context in which the alleged incident occurred must be considered. In any case, both the accuser and the accused are entitled to the same opportunities to have others present during any disciplinary proceeding. Both the accuser and the accused will be informed of the outcome of any proceeding.

During any sexual assault complaint proceeding, the University has a range of sanctions available. Those sanctions may range from probation to expulsion from the University, depending upon the nature and circumstances of the specific incident.

## **Sexual Assault Prevention Education Programs**

Specific information on rape, non-stranger rape, and other sexual offenses is made available through public education programs conducted by the Office of Student Affairs throughout the year.

- Penn state AWARE – (<http://edge.psu.edu/firstyear/>)  
On-line sexual assault awareness program required participation by all PSU first year, first semester students
- Offered each semester by Campus Health Services/Student Life
  - Date Rape Drugs table top Exhibit with flyers  
– Exposure to all students
  - STD Screening
  - Presentations by local Domestic Violence Shelter
- Speaker presentations on topics of personal safety, sexual assault, women's and men's health, etc.
- Campus Student Planner (printed) – contains contact information
- Student Affairs Fact Sheet – Health Services & Personal Counseling

## **Sex Offender Registration — Campus Sex Crimes Prevention Act**

### **Megan's Law**

Members of the general public may request community notification flyers for information concerning sexually violent predators in a particular community by visiting the chief law enforcement officer in that community. In jurisdictions where the Pennsylvania State Police is the primary law enforcement agency, members of the general public may make such requests at the local Pennsylvania State Police Station in that community. This information is also available on the Pennsylvania State Police "Megan's Law" website <http://www.pameganslaw.state.pa.us>.

## **CAMPUS SECURITY POLICIES; CRIME PREVENTION AND SAFETY AWARENESS PROGRAMS**

In addition to the many programs offered by the University Police and other University offices, the University has established a number of policies and procedures related to ensuring a reasonably safe campus community. These policies include:

### **Behavioral Threat Management Team**

In order to enhance emergency preparedness and prevention efforts, Penn State has established a Behavioral Threat Management Team (BTMT). The objective of the BTMT is to systematically identify, evaluate, and manage potentially threatening situations, including persons of concern, at the University. The multidisciplinary team is composed of people from University campuses and surrounding communities.

In addition to the BTMT at the University Park campus, each Commonwealth campus also has a team, responsible for managing concerning situations on their respective campuses. While the Commonwealth campus BTMTs may consult with the University Park team at any time, more serious and complex cases are managed in consultation with the University Park BTMT.

If you would like further information about the BTMT, please visit the Behavioral Threat Management website at <http://btmt.psu.edu>.

## **Weapons Policy**

The possession, carrying, and use of weapons, ammunition, or explosives is prohibited on University-owned or -controlled property.

The only exception to this policy is for authorized law enforcement officers or others, specifically authorized by the University. At some campuses, University Police provides storage facilities for the personal weapons of members of the University community. Failure to comply with the University weapons policy will result in disciplinary action against violators.

## **Fire Safety**

Penn State takes fire safety very seriously and continues to enhance its programs to the University community through education, engineering and enforcement. Educational programs are presented throughout the year to faculty, staff and students so they are aware of the rules and safe practices. These programs which are available at all campus locations include identification and prevention of fire hazards, actual building evacuation drills, specific occupant response to fire emergencies, and hands-on use of fire extinguishers.

Fire drills are conducted monthly in all Penn State residence halls during the school year. These drills allow occupants to become familiar with and practice their evacuation skills. Penn State has been a leader in ensuring the safety of students, faculty, staff, and visitors who live and work in University-operated residences. Automatic Sprinkler Systems and fire alarm systems are recognized engineered building features that help to provide for a fire safe living environment. All University-operated residence halls and apartments are provided with smoke detectors and building fire alarm systems to provide early detection and warning of a possible fire emergency. Automatic fire-suppression (sprinkler) systems are installed in all Housing and Food Services-operated student residences at University Park and Commonwealth Educational System Campus locations. The University maintains and tests all fire alarms and automatic fire-suppression systems in accordance with the appropriate National Fire Protection Association Standard to ensure system readiness and proper operation in the event of a fire emergency.

In addition, laboratory safety and evacuation plans are also part of the Environmental Health and Safety mission. EHS is dedicated to maintaining the safety of our community by conducting annual inspections, plan reviews, and evacuation drills in all laboratories on campus. The University has adopted and developed numerous safety policies and guidelines to help promote a safe living and work environment at all University locations. These policies, guidelines and other fire safety information can be accessed on the Internet at <http://www.ehs.psu.edu>.



## Pennsylvania Crime Victim Rights

### Your Rights as a Crime Victim:

As a victim of crime, you have rights. Also, you can expect to receive information, practical and emotional support, and be able to participate in the criminal justice process. These standards were created to make sure that you are treated with dignity and respect at all times, regardless of your gender, age, marital status, race, ethnic origin, sexual orientation, disability or religion.

You have the right to be told...

- About basic services available to you in your county
- About certain court events, including information on bail, escape of offender, release of an offender
- About the details of the final disposition of a case

You have the right to receive...

- Notice of the arrest of the offender
- Information about restitution and assistance with compensation
- Accompaniment to all criminal proceedings by a family member, a victim advocate, or a support person

You have the right to provide input...

- Into the sentencing decision and to receive help in preparing an oral and/or written victim impact statement
- Into post-sentencing decisions

Please see the resource list for local victim assistance options.

For more information about your detailed rights or to file a complaint if you believe your rights have been violated, please contact: The Pennsylvania Crime Victims Office at [http://www.portal.state.pa.us/portal/server.pt/community/pcv\\_home/14554](http://www.portal.state.pa.us/portal/server.pt/community/pcv_home/14554).

\*Source: Pennsylvania Crime Victims (2012). "Your Rights as a Crime Victim" at [www.portal.state.pa.us/portal/server.pt/community/your\\_rights\\_as\\_a\\_crime\\_victim/14555](http://www.portal.state.pa.us/portal/server.pt/community/your_rights_as_a_crime_victim/14555).

## Student Conduct

### The Office of Student Conduct

The mission of the Office of Student Conduct is to promote a safe, orderly, and civil University community and to encourage and inspire students to become good citizens by engaging in personal responsibility, ethical decision making, and demonstrating respect for the rights and safety of others.

### The Student Code of Conduct

The Office of Student Conduct is responsible for administering the Code of Conduct for Students, which articulates the behavioral standards and the equitable procedures employed by the University to respond to allegations of student misconduct.

The Code of Conduct for Students is administered at all Penn State campuses on University property and may also address off-campus student misconduct when a student's behavior affects a Substantial University Interest.

Students who are found responsible for violations may be subject to sanctions ranging from Disciplinary Warning or Disciplinary Probation to Suspension or Expulsion from the University. Students residing in University housing may also lose the privilege of living on campus for violating University rules and regulations or conditions of the housing contract.



In most cases the Office of Student Conduct will also assign developmental and educational interventions designed to promote greater awareness and improved decision making for students and to further deter future misconduct.

In instances where there is reasonable cause to believe a student is an immediate threat to the safety of himself/herself or other persons or property or is an immediate threat to disrupt essential campus operations, the Office of Student Conduct may assign an Interim Suspension and/or other actions, designed to protect the health and safety of the community and members therein.

The Office of Student Conduct is also responsible for conducting pre-admission, pre-enrollment, and re-enrollment reviews for prospective students with known behavioral problems.

Any individual or entity may submit reports alleging student misconduct to the Director of Student Affairs at 724-334-6062 or 724-334-6063.

The Office of Student Conduct also provides outreach programming designed to inform and educate students and to promote the Penn State Principles. Please visit the Student Conduct website at <http://studentaffairs.psu.edu/conduct>, where you can find the Student Code of Conduct, Parental Notification Policy, Student Records Policy, and links to all policy and procedural guidelines related to the Student Conduct process. Students are encouraged to take the "Know the Code" quiz located on the Student Conduct website.

### Additional Information Regarding the Student Code of Conduct

The Pennsylvania State University is obligated to provide all students with the University regulations, policies, and procedures governing student conduct. Penn State policies and procedures, including the Code of Conduct for Students and the Off-Campus Misconduct Policy, are published on the Student Conduct website, <http://studentaffairs.psu.edu/conduct>.

If you have additional questions, special needs, or wish to request a hard copy of this information, please contact the Office of Student Conduct at University Park.

This publication, as well as university regulations and policies and procedures governing student conduct, is available on the "Policies and Crime Statistics" channel of the Penn State Portal, <https://portal.psu.edu>.

## Parental Notification Policy

The University reserves the right to report student discipline information to the parents or legal guardians of students.

Federal legislation authorizes Penn State to disclose disciplinary records concerning violations of the University's rules and regulations governing the use or possession of alcohol or controlled substances that involve students who are under the age of 21, regardless of whether the student is a dependent.

The University may also report non-alcohol or drug related incidents to parents or legal guardians of dependent students under circumstances described in the Student Guide to General University Policy and Rules. See the following website for the University Code of Conduct and additional information concerning Parental Notification, <http://studentaffairs.psu.edu/judicial/policies/parents.shtml>.

## Missing Student Policy

The Higher Education Opportunity Act of 2008 (effective August 14, 2008) requires any institution participating in a Title IV federal student financial aid program that maintains on-campus housing facilities to establish a missing student notification policy and related procedures. The following policy and related procedures is Penn State's official Missing Student Policy.

When it is determined that a student is apparently missing from the University, staff at Penn State, in collaboration with campus and local law enforcement, will be guided by this Missing Student Policy and standing operating procedures, to locate the student.

### Provisions

#### NOTIFICATIONS

Penn State has developed a list of titles of persons and offices to which students, employees, or others can contact if they have reason to believe a student who lives in on-campus student housing has been missing for 24 hours. This policy requires others who believe a Penn State student is missing to immediately notify specific staff in the University administration, University Police, and local law enforcement.

Specifically, staff in the Office of Residence Life, Assistant Vice President for Student Affairs and Student and Family Services, University Police Services and Public Safety, and the senior Student Affairs professional at a campus, should be contacted so that they can coordinate efforts to locate the student. The list of positions, offices, and contact information to be utilized if a student is reported missing from the campus is included at the end of this policy (University Contacts for Missing Students).

In addition to contacting these specific offices, anyone who has a concern that a student is missing should alert any Penn State employee who they think will aid in the investigation of a student disappearance. Beyond notifications made by campus employees to University staff, University Police, or campus security, in the absence of a campus police or campus security department, any missing student report must be referred immediately to the local law enforcement agency that has jurisdiction in the geographical areas around the specific campus location.

## REGISTERING AND NOTIFYING MISSING STUDENT CONTACTS

In accordance with this policy, students will be notified annually that each residential student of the University has the option to confidentially designate an individual to be contacted by the Penn State administration no later than 24 hours after the time that it is determined the student is missing.

Penn State provides each student with the means and opportunity to register their confidential missing student contact information by logging into the University's eLion system and filling out the Address and Contact Information form. This missing student contact person can be anyone. This option is provided to students even if a student has already registered an individual as a general emergency contact. The student also has the option to identify the same individual for both their general emergency contact and missing student contact.

Missing student contact information is registered confidentially. This information is private and only accessible to Penn State employees who are authorized campus officials. This information will not be disclosed to others with the exception to law enforcement personnel in the furtherance of a missing student investigation.

Penn State will notify the missing student's parents or guardian in addition to the person identified as the missing student's contact person of any student who is under 18 years of age and not an emancipated individual. The University will make contact no later than 24 hours after the time that the student is determined to be missing.

## NOTIFYING LAW ENFORCEMENT

Penn State will also notify the appropriate local law enforcement agency of the missing student unless the local law enforcement agency was the entity that made the determination that the student was missing. This notification will include any missing student who lives in on-campus housing regardless of age or status, and regardless of whether he or she has registered a confidential missing student or general emergency contact person. This notification will be made no later than 24 hours after the time that the student is determined missing.

If the campus law enforcement personnel or campus security department has been notified that a student is suspected missing, and makes a determination that a student who is the subject of a missing person report has been missing for more than 24 hours, Penn State staff will initiate emergency contact procedures as outlined in Penn State's policy and protocol.

## UNIVERSITY CONTACTS FOR MISSING STUDENTS

Penn State New Kensington  
Director of Student Affairs  
112B Faculty and Administrative Bldg.  
New Kensington, PA 15068  
724-334-6062

## Daily Crime Log

The Office of Business and Finance maintains a Daily Crime Log of all incidents reported to the Department. The Office publishes an activity log every day, which is available to members of the press and public. This log identifies the type, location, and time of each criminal incident reported to the Office of Business and Finance or Security Office.

The most current 60 days of information is available the Security Office. Upon request a copy of any maintained Daily Crime Log will be made available for viewing, within 48 hours of notice.

## Crime Prevention and Safety Awareness Programs

The Penn State New Kensington campus has developed and implemented for our student population a systemic series of health and wellness educational programs and services in support of academic success. These programs range from mini-workshops and presentations open to the campus community to specific topical seminars targeting at risk and first year student populations. Below are specific programs held during the past calendar year.

### Penn State SAFE (Student Alcohol Feedback and Education)

Penn State SAFE is an on-line alcohol education program that uses evidence-based strategies to educate students about alcohol and its effects on the body. All first-year students who are 21 or younger at all Penn State campuses are required to complete the program prior to matriculation. *Fall 2012: 112 students completed the program during the implementation period.*

### Penn State AWARE (Sexual Assault Education)

Penn State AWARE is an online sexual violence education program. All first-year students, regardless of age, at all 20 Penn State campuses are required to complete the program prior to matriculation. The program educates students about sexual assault and sexual harassment. The program helps students develop practical skills to keep themselves and their friends safe. *Fall 2012: 110 students completed the program during the implementation period.*

## BASICS

By referral and assigned sanction for alcohol violations under Student Code of Conduct

### Annual Presentations at Formal Orientation Programs for New Students:

- Know the Code: Student Conduct and Personal Safety
- Peer Education Theatre, an orientation leader skit regarding alcohol abuse prevention
- A speaker presentation on college student issues

### Alcohol Abuse Prevention week activities offered each semester

### Alcohol Free Alternative Activities – evening and weekends

#### “Party Smart Kits”

Coolers/materials distributed to Students living in off-campus housing complex located adjacent to campus

## Campus Student Planner

Printed materials containing information on alcohol abuse prevention/Code of Conduct/Social Norming messages printed on each page of daily planner within calendar

## Family Guide

Publication for parents/families of students

## Campus Safety & Security Awareness programs

- Five Outs – All employees
- CPR & Heartsaver – classes provided to campus community
- Blood borne Pathogens – Physical plant staff
- Infection Control – Bio-med students
- Parent/Families Only Safety/Security presentation at each FTCAP session
- Family Guide – publication for parents/families contains information on campus safety/security and other emergency contacts

## PROGRAMS CONDUCTED BY PENN STATE NEW KENSINGTON (3 MOST RECENT YEARS)

2010: **229**

2011: **412**

2012: **364**

## PENN STATE UNIVERSITY POLICIES GOVERNING ALCOHOL AND OTHER DRUGS

### Penn State’s Alcohol and Drug Policy

Federal law requires Penn State to notify annually all faculty, staff, and students of certain information pertaining to the unlawful possession, use, or distribution of illicit drugs and alcohol on its property or as part of its activities. The information included in this report complies with the Drug-Free Schools and Campuses Regulations’ annual notification requirements.

The University prohibits the unlawful possession, use, manufacture, or distribution of alcohol or controlled substances by students, faculty, staff, and guests in buildings, facilities, grounds, or property controlled by the University or used as part of University activities. For students, this includes prohibiting the possession and consumption of any beverage containing alcohol in a residence hall room except by individuals who are 21 years or older at campuses where alcoholic beverages are permitted. This also includes prohibiting the presences of students under the age of 21 in residence hall rooms where alcohol is present. In addition, the smoking of any material is prohibited in all facilities of Penn State University at all locations.

### Areas Open to the Public

The Pennsylvania State University prohibits the possession and use of alcoholic beverages in areas open to the public, including areas of buildings open to the public. However, the use of alcoholic beverages, subject to the laws of the Commonwealth, may be permitted at University-sponsored activities in areas designated by, and with the prior approval of, the University Risk Manager at the University Park campus; the Senior Vice President for Health Affairs and Dean of the College of Medicine, Penn State Milton S. Hershey Medical Center; or at other non-University Park locations, the Chancellor or appropriate campus/center executive officer responsible for the area requested.





# Alcohol Poisoning is a Medical Emergency.

Call for help. You could save someone's life.

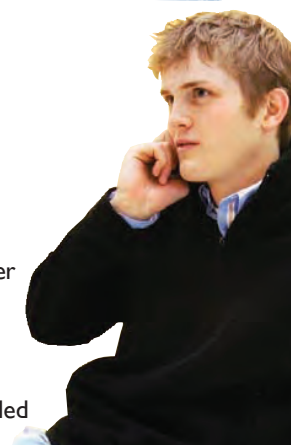
ON-CAMPUS: 335-0664 • OFF-CAMPUS: 911

## Know the signs:

- Passed out or difficult to wake
- Cold, clammy, pale, or bluish skin
- Slowed breathing
- Vomiting while asleep or awake

## Know how to help:

- Turn a vomiting person on his or her side to prevent choking
- Clear vomit from the mouth
- Keep the person awake
- NEVER leave the person unattended



## Private or Closed Areas

The possession and use of alcoholic beverages are prohibited in conference rooms, offices, office reception rooms, closed buildings, and areas of buildings not open to the public or from which the public has been excluded, except: the use of alcoholic beverages, subject to the laws of the Commonwealth, may be permitted in specific private or closed areas designated by, and with the prior approval of, the appropriate person responsible for the area of request.

## Education and Research Areas

The Pennsylvania State University specifically prohibits the use, possession, and dispensing of alcoholic beverages in classrooms, lecture halls, laboratories, libraries, research areas, or within buildings, arenas or areas where athletic events, lectures, or concerts are held, during such events or activities. Permission will not be granted to use or possess alcoholic beverages in a facility that is being used for one of the above functions. (Please consult Policy AD18, Use and Distribution of Alcoholic Beverages (<http://guru.psu.edu/policies/AD18.html>), for more information.)

## Policies Specific to Faculty and Staff

As a condition of University employment, every employee shall abide by the terms of this policy. Any employee who violates this policy is subject to Penn State sanctions, including dismissal, as well as criminal sanctions provided by federal, state, or local law. An employee may be required to participate in a drug abuse or drug rehabilitation program. An employee must notify his or her supervisor of any criminal drug conviction for a violation occurring in the University workplace no later than five (5) days after such conviction. Please consult Policy AD33, A Drug-Free Workplace for more information (<http://guru.psu.edu/policies/AD33.html>).

## Policies Specific to Penn State Students

Any student who violates this policy is subject to disciplinary action including sanctions as outlined in the Student Code of Conduct in addition to any penalties resulting from violating local, state, and/or federal law. Disciplinary sanctions may include: Students who are found responsible for violations may be subject to sanctions ranging from Disciplinary Warning or Disciplinary Probation to Suspension or Expulsion from the University. Students residing in University housing may also lose the privilege of living on campus for violating University rules and regulations or conditions of the housing contract. In most cases, the Office of Student Conduct will also assign developmental and educational interventions designed to promote greater awareness and improved decision making for students and to further deter future misconduct.

## Pennsylvania Alcohol-Related Offenses

### Underage Drinking

It is illegal for anyone under 21 years of age to attempt to purchase, consume, possess, or knowingly and intentionally transport any liquor, malt, or brewed beverage. It is also illegal to lie about age to obtain alcohol and to carry a false identification card.

Penalty	1st Offense	2nd Offense	Subsequent Offense
Fine	0–\$500	0–\$1,000	0–\$1,000
Jail	0–90 days	0–90 days	0–90 days
License Suspension	at least 90 days	at least 1 year	at least 2 years

By law, the local police department and University Police are required to notify parents or guardians of all underage-drinking violations.

Penn State University has a zero-tolerance policy associated with students consuming beverage alcohol under the age of 21. Not only is this against the Pennsylvania law, it is also a violation of the Student Code of Conduct.

### Carrying False I.D.

It is illegal for anyone under 21 to possess an identification card falsely identifying that person by name, age, date of birth, or photograph as being 21 or older to attempt to obtain liquor, malt, or brewed beverage by using the identification card of another or by using an identification card that has not been lawfully issued to or in the name of the person who possesses the card.

Penalty	1st Offense	2nd Offense	Subsequent Offense
Fine	0–\$300	0–\$500	0–\$500
Jail	0–90 days	0–1 year	0–1 year
License Suspension	at least 90 days	at least 1 year	at least 2 years

## Public Drunkenness

It is illegal to appear in any public place manifestly under the influence of alcohol to the degree that you may endanger yourself or other persons or property, or annoy others in your vicinity.

Public drunkenness is a crime when a person appears in any public place manifestly under the influence of alcohol or a controlled substance to the degree that he may endanger himself or other persons or property, or annoy persons in his vicinity.

Public drunkenness also leads to other behaviors and important health concerns. Often, public drunkenness contributes to many criminal mischiefs and disorderly conducts on campus. People must be responsible for their own actions and know their limits and tolerance levels before consuming alcohol.

Penalty	1st Offense	2nd Offense	Subsequent Offense
Fine	0–\$500	0–\$1,000	0–\$1,000
Jail	0–90 days	0–90 days	0–90 days

## Driving Under the Influence (DUI) Law

In Pennsylvania, the illegal level for DUI is .08 percent Blood Alcohol Content (BAC) and .02 percent BAC for minors. The law emphasizes treatment and a three-tier penalty system based on BAC and prior offenses: (1) general impairment (.08–.099 percent), (2) high rate of alcohol (.10–.159 percent), and (3) highest rate of alcohol (.16 percent and above).

Also, drivers with any amount of a Schedule I, II, or III controlled substance not been medically prescribed (or their metabolites) may not drive, operate, or be in actual physical control of a vehicle.

It is illegal for anyone under 21 years of age to drive a vehicle with a blood alcohol content of .02 percent or higher. A first-time offense individual, under certain circumstances, may qualify for an Accelerated Rehabilitative Disposition (ARD) program.<sup>2</sup>

Penalty	1st Offense	2nd Offense	Subsequent Offense
Fine	\$500–\$5,000	\$750–\$5,000	\$1,500–\$10,000
Jail	2 days–6 months	30 days–6 months	90 days–5 years
License Suspension	1 year	1 year	18 months
Other	Alcohol Safety School Court Reporting Network file	1 year Ignition Interlock license Court Reporting Network file Alcohol Highway Safety School	1 year Ignition Interlock license Court Reporting Network file



## Selling or Furnishing Alcohol to Minors

Penalty	1st Offense	2nd and Subsequent Offenses
Fine	\$1,000–\$2,500	\$2,500
Jail	0–1 year	0–1 year

## Refusing a Chemical Test

Any person who drives a motor vehicle automatically gives consent to one or more chemical test (e.g. breath, blood, or urine). This implied consent means that you don't have the right to an attorney before testing. If a person refuses to submit to a chemical test: (1) the test will not be done; (2) the person's license will be suspended for one year; (3) the person will most likely be charged with DUI.

For more information about all alcohol-related offenses in Pennsylvania, see [www.lcb.state.pa.us/PLCB/Education/index.htm](http://www.lcb.state.pa.us/PLCB/Education/index.htm). Click on "Alcohol & the Law."

## Open Container Law

In Pennsylvania, there is no state law to prohibit open containers of alcohol in public. However, many local governments have enacted such ordinances. For more information about all alcohol-related offenses in Pennsylvania, see [www.lcb.state.pa.us](http://www.lcb.state.pa.us). Click on "Alcohol & the Law."

## Upper Burrell Open Container Ordinance

<http://www.ecode360.com/UP3022>

## Upper Burrell Public Urination and Defecation Ordinance

<http://www.ecode360.com/UP3022>

<sup>2</sup> Depending on your Blood Alcohol level, you may be charged under additional subsections of the DUI statute. Note: If a student is from a state other than Pennsylvania and the home state is part of the national compact on DIO enforcement (46 states are), the student must fulfill these penalties in Pennsylvania and his/her license from the home state will be suspended, if applicable.



## Related Drug Offenses

### Possession of Marijuana

A person is unlawful when unknowingly, knowingly, or intentionally possesses marijuana (Hashish), a Schedule I substance, and is not authorized by law to possess such substance, as outlined under the Controlled Substances, Drugs, Device and Cosmetic Act of 1972.

Persons engaged in such activity will most likely be faced with criminal charges and charged with a violation of the Student Code of Conduct.

The charges for marijuana possession include:

Quantity	Charge	Jail Time	Fine
30 grams or less	Misdemeanor	30 days	0–\$500
Over 30 grams	Misdemeanor	1 year	0–\$5,000

### Possession of Other Drugs

In Pennsylvania, the penalties for being convicted of possession of a controlled substance such as heroin, cocaine, methamphetamines, prescriptions, ecstasy, and LSD vary by type of substance and quantity of the substance possessed. Charges also vary by first, second and subsequent offenses. Charges may include jail time, fines, drug counseling, and suspension of driver's license.

### Possession of Drug Paraphernalia

A person is unlawful when he possesses, with the intent to use, drug paraphernalia that is used for packaging, manufacturing, injecting, ingesting, inhaling, or otherwise introducing into the human body a controlled substance in violation of the Controlled Substances, Drugs, Device and Cosmetic Act of 1972.

### Synthetic Marijuana

Effective March 1, 2011, the U.S. Drug Enforcement Agency classified synthetic marijuana as an illegal substance. It is also known as Spice, K2, Demon, Wicked, Black Magic, Voodoo Spice, and Ninja Aroma Plsu. Individuals found responsible for manufacturing, possessing, importing/exporting, or distributing these substances will face criminal and civil penalties. Penn State students engaging in these activities will also be held responsible under the University's illegal substances policy. It is also against University policy to use synthetic marijuana.



## Controlled Substances Act

Schedule of Controlled Substance Categories and Examples	For Felony Delivery and Obtaining Possession thru Forgery or Fraud	For Misdemeanor Possession
<b>Schedule I:</b> Substances with a high potential for abuse, no currently accepted medical use in the U.S. and a lack of accepted safety for use under medical supervision. Gama Hydroxybutyric Acid (GHB) Heroin LSD Methaqualone Mescaline Ecstasy Psilcybin/Psilocyn (mushrooms) Phencyclidine (PCP) Tetrahydrocannabino/S (THC) Marijuana & Hashish: 1,000 kg. or more  50 kg. to 999 kg.  Under 50 kg.	Jail: 5 years to life Fine: Up to \$4,000,000          Jail: 10 years to life Fine: Up to \$4,000,000   Jail: 5 to 40 years Fine: Up to \$2,000,000   Jail: Up to 5 years Fine: Up to \$250,000	Jail: Up to 1 year Fine: Up to \$100,000
<b>Schedule II:</b> Substances with a high potential for abuse, currently accepted medical use in the U.S., or with severe restrictions, and abuse may lead to severe psychological or physical dependence. Morphine Methadone Amphetamine Cocaine Methamphetamine Oxycodone	Jail: Up to 20 years Fine: Up to \$1,000,000	Jail: Up to 1 year Fine: Up to \$100,000
<b>Schedule III:</b> Substances with less abuse potential than Schedules I and II; an accepted medical use, and low to moderate dependence from abuse. Anabolic Steroids Codeine Compounds Ketamine (Special K) Phendimetrazine Tincture of Opium	Jail: Up to 5 years Fine: Up to \$250,000	Jail: Up to 1 year Fine: Up to \$100,000
<b>Schedule IV:</b> Substances with a lower potential for abuse than Schedule III; an accepted medical use; and limited dependence from abuse. Valium Ativan Xanax	Jail: Up to 3 years Fine: Up to \$250,000	Jail: Up to 1 year Fine: Up to \$100,000
<b>Schedule V:</b> Substances with a lower potential for abuse than Schedule IV; an accepted medical use; and limited dependence from abuse. Parapectolin Robitussin AC	Jail: Up to 1 year Fine: Up to \$100,000	Jail: Up to 1 year Fine: Up to \$100,000

\* The Controlled Substances Act (CSA), Title II of the Comprehensive Drug Abuse Prevention and Control Act of 1970.

Federal law also allows for the possibility of loss of property and federal grants as defined by the Controlled Substances Act and regulation 21CFR 1300.11–1300.15.

**For more information, visit [www.usdoj.gov/dea/pubs/scheduling](http://www.usdoj.gov/dea/pubs/scheduling)**

## Drugs Risks and Consequences

SUBSTANCE Other Names	Potential for Dependence		Risks and Effects		
	Physical	Psycho-logical	Short-Term	Long-Term	Overdose
<b>ALCOHOL</b> Beer, Distilled liquor, Ethanol, Wine	High	High	<ul style="list-style-type: none"> <li>Impaired judgment &amp; vision</li> <li>Lowered inhibitions</li> <li>Loss of motor skills &amp; coordination</li> <li>Slurred speech</li> <li>Confusion</li> <li>Euphoria</li> <li>Impaired balance and coordination</li> <li>Memory loss</li> <li>Slowed reaction time</li> <li>Slowed thinking</li> </ul>	<ul style="list-style-type: none"> <li>Cardiovascular disease</li> <li>Hypertension</li> <li>Liver damage</li> <li>Neurologic damage</li> <li>Toxic psychosis</li> <li>Cardiovascular damage</li> <li>Frequent respiratory infections</li> <li>Impaired learning</li> <li>Impaired memory</li> <li>Increased heart rate</li> <li>Tolerance and addiction</li> </ul>	<ul style="list-style-type: none"> <li>Coma</li> <li>Possible death</li> </ul>
<b>CANNABIS</b> Hash oil, Hashish, Grass, Marijuana, Pot, Weed	Low	Moderate	<ul style="list-style-type: none"> <li>Confusion</li> <li>Fatigue</li> <li>Feeling of well-being, irritability</li> <li>Lowered blood pressure</li> <li>Lowered inhibitions</li> <li>Poor concentration</li> <li>Reduced anxiety</li> <li>Sedation</li> <li>Slowed pulse and breathing</li> <li>Slurred speech</li> <li>Altered stated of perception</li> <li>Increase body temperature, heart rate, blood pressure</li> <li>Loss of appetite</li> <li>Nausea</li> <li>Numbness</li> <li>Sleeplessness</li> <li>Tremors Weakness</li> </ul>	<ul style="list-style-type: none"> <li>Anxiety</li> <li>Dizziness</li> <li>Hallucinations</li> <li>Insomnia</li> <li>Loss of peripheral vision</li> <li>Nausea</li> <li>Seizures</li> <li>Weak, rapid pulse</li> <li>Toxic psychosis</li> <li>Tremors</li> <li>Hallucinogen Persisting Perception Disorder (flashbacks)</li> <li>Intensify existing psychosis</li> <li>Violent behavior</li> </ul>	<ul style="list-style-type: none"> <li>Insomnia</li> <li>Hyperactivity</li> <li>Panic attack</li> <li>Paranoia</li> <li>Possible toxic reaction if combined with other chemicals</li> </ul>
<b>DEPRESSANTS</b> Barbiturates, Benzodiazepine, Date rape drug, Liquid ecstasy, Flunitrazepam, GHB, Methaqualone, Special K, Xanax	High	High	<ul style="list-style-type: none"> <li>Confusion</li> <li>Fatigue</li> <li>Feeling of well-being, irritability</li> <li>Lowered blood pressure</li> <li>Lowered inhibitions</li> <li>Poor concentration</li> <li>Reduced anxiety</li> <li>Sedation</li> <li>Slowed pulse and breathing</li> <li>Slurred speech</li> <li>Altered stated of perception</li> <li>Increase body temperature, heart rate, blood pressure</li> <li>Loss of appetite</li> <li>Nausea</li> <li>Numbness</li> <li>Sleeplessness</li> <li>Tremors Weakness</li> </ul>	<ul style="list-style-type: none"> <li>Anxiety</li> <li>Dizziness</li> <li>Hallucinations</li> <li>Insomnia</li> <li>Loss of peripheral vision</li> <li>Nausea</li> <li>Seizures</li> <li>Weak, rapid pulse</li> <li>Toxic psychosis</li> <li>Tremors</li> <li>Hallucinogen Persisting Perception Disorder (flashbacks)</li> <li>Intensify existing psychosis</li> <li>Violent behavior</li> </ul>	<ul style="list-style-type: none"> <li>Blackouts</li> <li>Cold, clammy skin</li> <li>Coma</li> <li>Life threatening withdrawal</li> <li>Possible death</li> <li>Respiratory depression and arrest</li> <li>Toxic reaction if combined with alcohol</li> </ul>
<b>HALLUCINOGENICS</b> Acid, Angel Dust, Crystal, LSD, MDA, Mescaline, Mushrooms, PCP, Peyote, Phencyclidine, Psilocybin	Low / Unknown	Unknown	<ul style="list-style-type: none"> <li>Impaired judgment</li> <li>Headache</li> <li>Nausea, vomiting</li> <li>Poor coordination</li> <li>Slurred speech</li> <li>Confusion</li> <li>Constipation</li> <li>Drowsiness</li> <li>Euphoria</li> <li>Nausea</li> <li>Pain relief</li> <li>Sedation</li> <li>Staggering gait</li> </ul>	<ul style="list-style-type: none"> <li>Cardiovascular and nervous system damage, leading to inability to walk, talk, or think</li> <li>Cramps</li> <li>Depression</li> <li>Loss of muscle tone</li> <li>Memory impairment</li> <li>Mild withdrawal</li> <li>Muscle wasting and weakness</li> <li>Weight loss</li> <li>AIDS &amp; Hepatitis infection</li> <li>Malnutrition</li> </ul>	<ul style="list-style-type: none"> <li>Intense, prolonged hallucinations</li> <li>Possible sudden death</li> <li>Psychosis</li> </ul>
<b>INHALANTS</b> Gases, Solvents	High for chronic, long-term abuse	High for chronic, long-term abuse	<ul style="list-style-type: none"> <li>Confusion</li> <li>Constipation</li> <li>Drowsiness</li> <li>Euphoria</li> <li>Nausea</li> <li>Pain relief</li> <li>Sedation</li> <li>Staggering gait</li> </ul>	<ul style="list-style-type: none"> <li>Cardiovascular and nervous system damage, leading to inability to walk, talk, or think</li> <li>Cramps</li> <li>Depression</li> <li>Loss of muscle tone</li> <li>Memory impairment</li> <li>Mild withdrawal</li> <li>Muscle wasting and weakness</li> <li>Weight loss</li> <li>AIDS &amp; Hepatitis infection</li> <li>Malnutrition</li> </ul>	<ul style="list-style-type: none"> <li>Coma</li> <li>Possible sudden death</li> <li>Possible toxic reaction</li> <li>Unconsciousness</li> </ul>
<b>NARCOTICS</b> Codeine, Demerol HCL, Heroin, Meperidine, Morphine, Opium, Oxycodone, Vicodin	High	High	<ul style="list-style-type: none"> <li>Appetite loss</li> <li>Excitement &amp; euphoria</li> <li>Feeling of well being</li> <li>Increased alertness</li> <li>Increased blood pressure, pulse</li> <li>Insomnia</li> </ul>	<ul style="list-style-type: none"> <li>Insomnia</li> <li>Nervous system damage</li> <li>Organ/tissue damage</li> <li>Paranoia</li> <li>Psychosis</li> <li>Weight loss</li> </ul>	<ul style="list-style-type: none"> <li>Clammy skin</li> <li>Coma</li> <li>Convulsions</li> <li>Death</li> <li>Respiratory arrest</li> <li>Shallow perspirations</li> <li>Tolerance, addiction</li> <li>Toxic reaction if combined with alcohol</li> </ul>
<b>STIMULANTS</b> Amphetamine, Cocaine, Ecstasy, MDMA, Methylphenidate, Phenmetrazine, Ritalin	Possible	High	<ul style="list-style-type: none"> <li>Bad breath</li> <li>Bad taste in mouth</li> <li>Decreased lung capacity</li> <li>Increased blood pressure</li> <li>Increased heart rate</li> </ul>	<ul style="list-style-type: none"> <li>Adverse pregnancy outcomes</li> <li>Cardiovascular disease</li> <li>Cancer</li> </ul>	<ul style="list-style-type: none"> <li>Agitation</li> <li>Convulsions</li> <li>Hallucinations</li> <li>Heart attack, stroke</li> <li>High blood pressure</li> <li>Loss of consciousness</li> <li>Seizures</li> <li>Temperature increase</li> <li>Possible death</li> </ul>
<b>TOBACCO</b> Chewing/Smokeless Tobacco, Cigarettes, Cigars, Nicotine	High	High			

### Notes:

- Alcohol and other drug use during pregnancy increases risk of physical harm to fetus.
- Additional risks of harm may occur from toxic impurities present in street drugs.
- Additional risks of harm may occur from the use of prescription drugs in ways other than prescribed.
- Drugs taken by injection can increase the risk of infection (e.g., HIV, hepatitis, etc.) through needle contamination.

**For more information, visit:**  
[www.drugabuse.gov](http://www.drugabuse.gov)  
[www.samhsa.gov](http://www.samhsa.gov)

## Drug and Alcohol Abuse Education Programs

### Resources for Faculty and Staff

Penn State's Employee Assistance Program (EAP) is available for Penn State employees if they have a problem with substance abuse or if someone they know may have a problem. If you suspect that you or someone close to you may have a problem with alcohol or other drugs . . . stop hurting and start healing.

- Penn State faculty and staff can reach the EAP 24 hours a day, 7 days a week by calling 1-866-749-1735.
- Any employee or supervisor with additional questions related to Office of Human Resources: Health Matters 814-865-3085.



### Resources for Students

Campus Resources		
Office of Student Affairs	Administration Building, Room 112B	724-334-6062
Health and Wellness Services - Health and Emergency Medical Services - Disability Contract Liaison - Alcohol Awareness Prevention Programs - Sexual Harassment Officer	The Physical Education Building, Room 101	724-334-6066
BASICS – Brief Alcohol Screening and Intervention for College Students	<a href="http://nk.psu.edu/StudentServices">http://nk.psu.edu/StudentServices</a>	724-334-6062
Personal Counseling Services: - Intervention - Referral - Individual and group counseling	<a href="http://nk.psu.edu/StudentServices">http://nk.psu.edu/StudentServices</a>	724-334-6744 or 724-224-3031
Office of Student Conduct		724-334-6061
University Health Services		724-334-6066
Penn State Office of Human Resources		724-334-6022
Employee Assistance Program		724-334-6022
Health Matters		724-430-4137

Community Resources		
CSAS-Alle-Kiski	2120 Freeport Road New Kensington, PA 15068	724-339-68607
Mental Health/ Mental Retardation/ Drug & Alcohol Treatment and Evaluation Services	429 Forbes Ave. 901 Allegheny Building	412-355-4457 24-Hour Emergency 412-355-4457
Alcoholics Anonymous (AA)		24-Hour Emergency 724-471-7472
Al-Anon Family Groups		800-628-8920
Hope Center, Inc. - Domestic Violence Shelter - 24-Hour Crisis Intervention - Individual Crisis Counseling - Legal Advocacy		888-299-4673
Victim Witness Advocate		724-830-3272



## ANNUAL DISCLOSURE OF CRIME STATISTICS

While Penn State New Kensington is a reasonably safe environment, crimes do occur. In addition to the Clery Act crimes statistics, other common crimes that occur on campus are outlined below:

### Theft

Theft is a common occurrence on college campuses. Often, this is due to the fact that theft is a crime of opportunity. Recreation facilities, open classrooms, and laboratories provide thieves with effortless opportunities. Often, individuals leave classrooms and laboratories unlocked when not occupied for short periods of time.

It is important to be very vigilant when it comes to suspicious persons. Never leave items and valuables lying around unsecured. Doors should be locked at all times. The following is a list of suggestions to help you not fall victim to theft.

- ☐ Keep doors to residence halls, labs, classrooms locked when not occupied.
- ☐ Don't provide unauthorized access to persons in the buildings or classrooms.
- ☐ Do not keep large amounts of money with you.
- ☐ Lock all valuables, money, jewelry, and checkbooks in a lock box or locked drawer.
- ☐ Keep a list of all valuable possessions including the make, models, and serial numbers.
- ☐ Take advantage of the Engraving Programs to have all valuables engraved with specific identifying marks.
- ☐ Don't leave laptop computers or textbooks unattended in labs or libraries, even if it is for a short period of time.
- ☐ Don't lend credit cards or identification cards to anyone.
- ☐ Report loitering persons or suspicious persons to police immediately; don't take any chances.

### Identity Theft

Identity theft is a crime in which someone wrongfully obtains and uses another person's personal information in some ways that involve fraud or deception, typically for economic gain. This personal data could be a Social Security number, bank account, or credit card information.

Persons involved in identity theft often use computers or other forms of media to assist them.

You can take measures to prevent this from happening to you:

- Do not give anyone your personal information unless there is a legitimate reason to trust them.
- Never give your credit card information, date of birth, or other information over the telephone, unless you can confirm the person receiving that information.
- Complete a credit check frequently to assure there is no suspicious activity.
- Examine financial information often to assure all transactions are authorized and accounted for.
- Use security software and install firewalls on computers.

### Clery Act Crimes

Jeanne Clery Disclosure of Campus Security Policy and Campus Crime Statistics Act (20 USC § 1092(f)) requires colleges and universities across the United States to disclose information about crime on and around their campuses. Penn State New Kensington maintains a close relationship with both the Upper Burrell Police and the Pennsylvania State Police to ensure that crimes reported directly to these police departments that involve the University are brought to the University's attention.

The Office of Business and Finance collects the crime statistics from campus security authorities and local and state police. The Director of Business and Finance examines the data to ensure that all reported crimes are recorded in accordance with the crime definitions outlined in the FBI Uniform Crime Reporting Handbook and the FBI National Incident-Based Reporting System Handbook (sex offenses only). The statistics reported here generally reflect the number of criminal incidents reported to the various authorities. The statistics reported for the subcategories on liquor laws, drug laws and weapons offenses represent the number of people arrested or referred to campus judicial authorities for respective violations, not the number of offenses documented.



## Definitions of Reportable Crimes

**Murder/Manslaughter** – defined as the willful killing of one human being by another.

**Negligent Manslaughter** – defined as the killing of another person through gross negligence.

**Forcible sex offenses** – defined as any sexual act directed against another person, forcibly and/or against that person's will; or not forcibly or against the person's will where the victim is incapable of giving consent. Including: forcible rape, forcible sodomy, sexual assault with an object, forcible fondling.

**Non-forcible sex offense** – unlawful, non-forcible sexual intercourse, including, incest and statutory rape.

**Robbery** – defined as taking or attempting to take anything of value from the car, custody, or control of a person or persons by force or threat of force or violence and/or by putting the victim in fear.

**Aggravated Assault** – defined as an unlawful attack by one person upon another for the purpose of inflicting severe or aggravated bodily injury. This type of assault usually is accompanied by the use of a weapon or by means likely to produce death or great bodily harm.

**Burglary** – unlawful entry of a structure to commit a felony or a theft.

**Motor Vehicle Theft** – theft or attempted theft of a motor vehicle.

**Arson** – any willful or malicious burning or attempt to burn, with or without intent to defraud, a dwelling house, public building, motor vehicle or aircraft, personal property of another, etc.

**Hate Crimes** – includes all of the crimes listed above that manifest evidence that the victim was chosen based on one of the categories of prejudice listed to the right, plus the following crimes.

**Larceny/Theft** – includes pocket picking, purse snatching, shoplifting, theft from building, theft from motor vehicle, theft of motor vehicle parts or accessories, and all other larceny.

**Simple Assault** – unlawful physical attack by one person upon another where neither the offender displays a weapon, nor the victim suffers obvious severe or aggravated bodily injury involving apparent broken bones, loss of teeth, possible internal injury, severe laceration or loss of consciousness.

**Intimidation** – to unlawfully place another person in reasonable fear of bodily harm through the use of threatening words and/or other conduct but without displaying a weapon or subjecting the victim to actual physical attack.

**Destruction/Damage/Vandalism to Property (except Arson)** – to willfully or maliciously destroy, damage, deface or otherwise injure real or personal property without the consent of the owner or the person having custody or control of it.



## Categories of Prejudice

**Race** – A preformed negative attitude toward a group of persons who possess common physical characteristics genetically transmitted by descent and heredity which distinguish them as a distinct division of humankind.

**Gender** – A preformed negative opinion or attitude toward a group of persons because those persons are male or female.

**Religion** – A preformed negative opinion or attitude toward a group of persons who share the same religious beliefs regarding the origin and purpose of the universe and the existence or nonexistence of a supreme being.

**Sexual Orientation** – A preformed negative opinion or attitude toward a group of persons based on their sexual attraction toward, and responsiveness to, members of their own sex or members of the opposite sex.

**Ethnicity/national origin** – A preformed negative opinion or attitude toward a group of persons of the same race or national origin who share common or similar traits, languages, customs and traditions.

**Disability** – A preformed negative opinion or attitude toward a group of persons based on their physical or mental impairments/challenges, whether such disability is temporary or permanent, congenital or acquired by heredity, accident, injury, advanced age, or illness.

## CRIME STATISTICS: CLERY DATA REPORTED TO UNIVERSITY POLICE

The following annual security report provides crime statistics for selected crimes that have been reported to local police agencies or to campus security authorities. The statistics reported here generally reflect the number of criminal incidents reported to the various authorities. The statistics reported for the sub-categories on liquor laws, drug laws, and weapons offenses represented the number of people arrested or referred to campus judicial authorities for respective violations, not the number of offenses documented. This report complies with 20 U.S. Code Section 1092 (f).

	2010				2011				2012			
OFFENSES	On-Campus	Residence Hall	Public Property	Non-Campus	On-Campus	Residence Hall	Public Property	Non-Campus	On-Campus	Residence Hall	Public Property	Non-Campus
Murder/Non-negligent Manslaughter	0	0	0	0	0	0	0	0	0	0	0	0
Negligent Manslaughter	0	0	0	0	0	0	0	0	0	0	0	0
Sex Offenses - Forcible*	0	0	0	0	0	0	0	0	0	0	0	0
Sex Offenses - Non-forcible	0	0	0	0	0	0	0	0	0	0	0	0
Robbery	0	0	0	0	0	0	0	0	0	0	0	0
Aggravated Assault	0	0	0	0	0	0	0	0	0	0	0	0
Burglary	0	0	0	0	0	0	0	0	0	0	0	0
Motor Vehicle Theft	0	0	0	0	0	0	0	0	0	0	0	0
Arson	0	0	0	0	0	0	0	0	0	0	0	0
ARRESTS												
Weapons	0	0	0	0	0	0	0	0	0	0	0	0
Drugs	0	0	0	0	0	0	0	0	0	0	0	0
Alcohol	0	0	0	0	0	0	0	0	5	0	0	0
REFERRALS												
Weapons	0	0	0	0	0	0	0	0	0	0	0	0
Drugs	0	0	0	0	0	0	0	0	0	0	0	0
Alcohol	5	0	0	0	0	0	0	0	0	0	0	0
HATE CRIMES												
Murder/Non-negligent Manslaughter	0	0	0	0	0	0	0	0	0	0	0	0
Negligent Manslaughter	0	0	0	0	0	0	0	0	0	0	0	0
Sex Offenses - Forcible	0	0	0	0	0	0	0	0	0	0	0	0
Sex Offenses - Non-forcible	0	0	0	0	0	0	0	0	0	0	0	0
Robbery	0	0	0	0	0	0	0	0	0	0	0	0
Aggravated Assault	0	0	0	0	0	0	0	0	0	0	0	0
Burglary	0	0	0	0	0	0	0	0	0	0	0	0
Motor Vehicle Theft	0	0	0	0	0	0	0	0	0	0	0	0
Arson	0	0	0	0	0	0	0	0	0	0	0	0
Larceny	0	0	0	0	0	0	0	0	0	0	0	0
Simple Assault	0	0	0	0	0	0	0	0	0	0	0	0
Intimidation	0	0	0	0	0	0	0	0	0	0	0	0
Vandalism	0	0	0	0	0	0	0	0	0	0	0	0

**Hate Crime Key:** (D) Disability (E) Ethnicity (Ra) Race (Re) Religion (S) Sexual Orientation (G) Gender

\* After conducting a review of 2010 data provided by local law enforcement, the following data was changed in the "Public Property" crime data:

Sex Offenses - Forcible from (1) to (0), Aggravated Assault from (1) to (0), Weapons Arrests from (3) to (0), Drugs Arrests from (4) to (0), Alcohol Arrests from (3) to (0)

Revised 4/22/14



# Pennsylvania Uniform Crime Report Act

Crime statistics are reported to the Pennsylvania State Police for annual publication in "Crime in Pennsylvania, the Uniform Crime Report of the Commonwealth." These statistics are also available in the U.S. Department of Justice Publication, Crime in the United States, which is available at all public libraries and most law enforcement agencies within the United States. Crime statistics are also available by writing to University Police, The Pennsylvania State University, 30 Eisenhower Parking Deck, University Park, PA 16802-2116 or can be accessed on the internet at <http://www.police.psu.edu>.

CAMPUS: New Kensington	2010			2011			2012		
	ON CAMPUS			ON CAMPUS			ON CAMPUS		
	ACTUAL OFFENSES	*CRIME RATE	ARREST DATA	ACTUAL OFFENSES	*CRIME RATE	ARREST DATA	ACTUAL OFFENSES	*CRIME RATE	ARREST DATA
<b>PART I OFFENSES</b>									
<b>CRIMINAL HOMICIDE</b>									
Murder & Non-negligent Manslaughter									
Manslaughter by Negligence									
<b>FORCIBLE RAPE</b>									
Rape by Force									
Assault to Rape - Attempts									
<b>ROBBERY</b>									
Firearm									
Knife or Cutting Instrument									
Other Dangerous Weapon									
Strong Arm (Hands, Feet, etc.)									
<b>ASSAULT</b>									
Firearm									
Knife or Cutting Instrument									
Other Dangerous Weapon									
Hands, Fists, Feet, etc.									
<b>BURGLARY</b>									
Forcible Entry									
Unlawful Entry - No Force									
Attempted Forcible Entry									
<b>LARCENY - THEFT</b> (Exc. Motor Vehicles)									
<b>MOTOR VEHICLE THEFT</b>									
Autos									
Trucks and Buses									
Other Vehicles									
<b>ARSON</b>									
<b>TOTAL PART I OFFENSES</b>	0	0	0	0	0	0	0	0	0
<b>PART II OFFENSES</b>									
<b>Assaults - Non-Aggravated</b>									
<b>Forgery and Counterfeiting</b>									
<b>Fraud</b>									
<b>Embezzlement</b>									
<b>Stolen Prop., Rec., Possess., etc.</b>									
<b>Vandalism</b>									
<b>Weapons, Carrying, Possess., etc.</b>									
<b>Prostitution &amp; Commercialized Vice</b>									
<b>Sex Offenses</b> (Exc. Prostitution & Rape)									
<b>Drug Abuse Violations</b>									
<b>S</b> Opium-Cocaine									
<b>A</b> Marijuana									
<b>L</b> Synthetic									
<b>E</b> Other									
<b>P</b> Opium-Cocaine									
<b>O</b> Marijuana									
<b>S</b> Synthetic									
<b>S</b> Other									
<b>Gambling</b>									
Book Making									
Numbers, etc.									
<b>Offenses Against Family &amp; Children</b>									
<b>Driving Under the Influence</b>									
<b>Liquor Laws</b>									
<b>Drunkenness</b>									
<b>Disorderly Conduct</b>									
<b>Vagrancy</b>									
<b>All Other Offenses</b> (Exc. Traffic)									
<b>TOTAL PART II OFFENSES</b>	0	0	0	0	0	0	0	0	0
<b>TOTAL PART I &amp; PART II OFFENSES</b>	0	0	0	0	0	0	0	0	0

New Kensington	
Full Time Employees	99
Students	715

\*RATE: Per 100,000 population. Population is calculated using full-time equivalent students, faculty, and staff.

\*\*Reasonably contiguous buildings/property owned by Penn State or student organizations recognized by Penn State.

(" ) " indicates the number of incidents, if any, that are classified as hate crimes by the Hate Crimes Statistics Act (28 U.S.C. 534).

Footnote: These statistics comply with the Pennsylvania Campus Security Act (PA Title 24 Section 2502-1 to -5) enacted May 1988.

(a) Aggravated Assault

## IMPORTANT PHONE NUMBERS

### Penn State University Police/Fire/EMS

814-863-1111

911

Eisenhower Parking Deck, University Park

### Police & Public Safety

- For immediate emergency assistance: Dial "911"
- Upper Burrell Police: 724-335-0664
- Lower Burrell Police: 724-339-4287
- New Kensington Police: 724-339-7534
- Upper Burrell Township Building: 724-335-3517
- Upper Burrell Fire Department: 724-335-0212
- Pennsylvania State Police: 724-727-3434

### Penn State New Kensington Personal Counseling Services

724-334-6744 or 724-224-3031

### Penn State New Kensington Early Alert & Crisis Intervention

724-334-6062

### Domestic Violence/Rape Crises

- Local Domestic Violence Hotline & Shelter (Alle-Kiski Hope Center): 888-299-4673 or 724-224-1266
- National Domestic Violence Hotline: 800-799-7233
- National Sexual Assault (RAINN) Hotline: 800-656-4673
- Penn State Sexual Assault & Relationship Violence: 800-550-7575 or 866-714-7177 (TTY)
- Rape Crisis & Counseling Center: 724-837-9540
- Sexual Assault & Relationship Violence-AWARE: 888-981-1457
- The Blackburn Center Hotline: 724-836-1122
- The Welcome Home: 724-838-9133
- Victim Witness Services: 724-830-3272
- Women's Services of Westmoreland County Hotline: 412-836-1122
- Women's Shelter of Allegheny County: 877-338-8255

### Behavioral Health (Westmoreland County Helplines)

- Mental Health Crisis Intervention Hotline: 800-836-6010
- Drug and Alcohol Helpline: 800-222-8848
- Disaster, Crisis & Outreach Referral: 724-830-3617

### Environmental Health and Safety

814-865-6391

Eisenhower Parking Deck, University Park

## In Case of Emergency

**DIAL: 911**

**on any telephone**

If you are on campus, you can reach Upper Burrell Police by dialing **335-0664**, Lower Burrell Police by dialing **339-4287**, or New Kensington Police by dialing **339-7534** from any other phone.

University Police may also be reached by pressing the emergency button on any of the emergency phones located around campus.



## PSUTXT

PSUTXT is an emergency notification text messaging service that allows Penn State to send messages to your cell phone in the event of a campus emergency, such as weather-related school closings, delays, and other news alerts. Your subscription is free for this service, but your phone plan may charge for receiving text messages. To register, go to <http://psutxt.psu.edu> and follow the instructions. To verify that you have subscribed, you will receive a text message at the cell phone number you provided. Then, follow the instructions you receive in order to validate your subscription. You can also subscribe to receive these messages via email using the same website referenced above.

## Register to Vote

All students are urged to register to vote in local, state, and national elections. Go to <http://fec.gov/voteregis/pdf/pa.pdf> for a printable Voter Registration Application. Note that Adobe Acrobat must be loaded to view the Voter Registration Application.